

Plan No. 6932
 Deposited in the Land Registry
 Office at Kamloops B.C. 1915
 18 day of Feb. 1955

A. J. Day
 Deputy Registrar



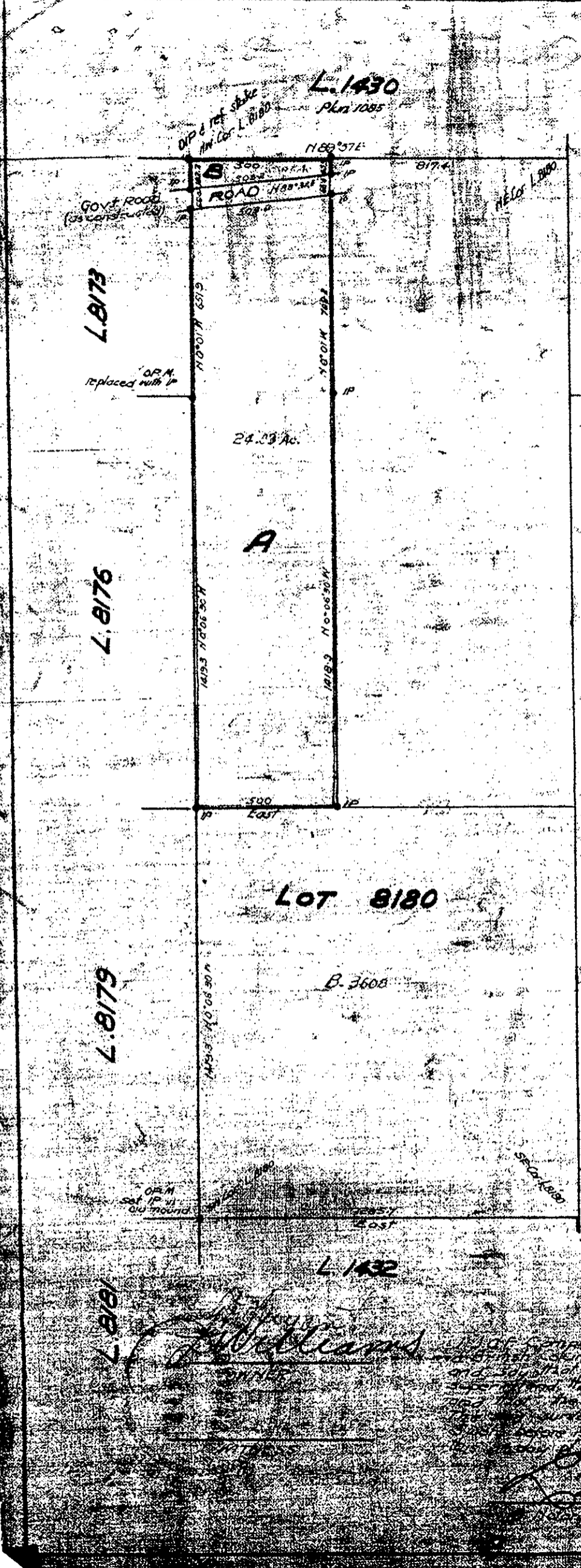
**PLAN OF SUBDIVISION
 OF PART OF LOT 8180
 CARIBOO DIST.**

Scale: 400ft. = 1 inch

Bearings are astronomic
 derived from boundaries
 of Lot 8180 as shown on plan
 & field notes of L. 8180 deposited
 in Dept of Lands, Victoria B.C.
 in 1925

Old iron stakes found shown ● OP
 Iron stakes set shown ● IP

Approved under the Land
 Registry Act this 12th day
 of JANUARY 1955
A. J. Powering
 Asst. Chief Engineer
 Dept. of Public Works



J. Campbell
 Surveyor

J. Campbell
 Surveyor