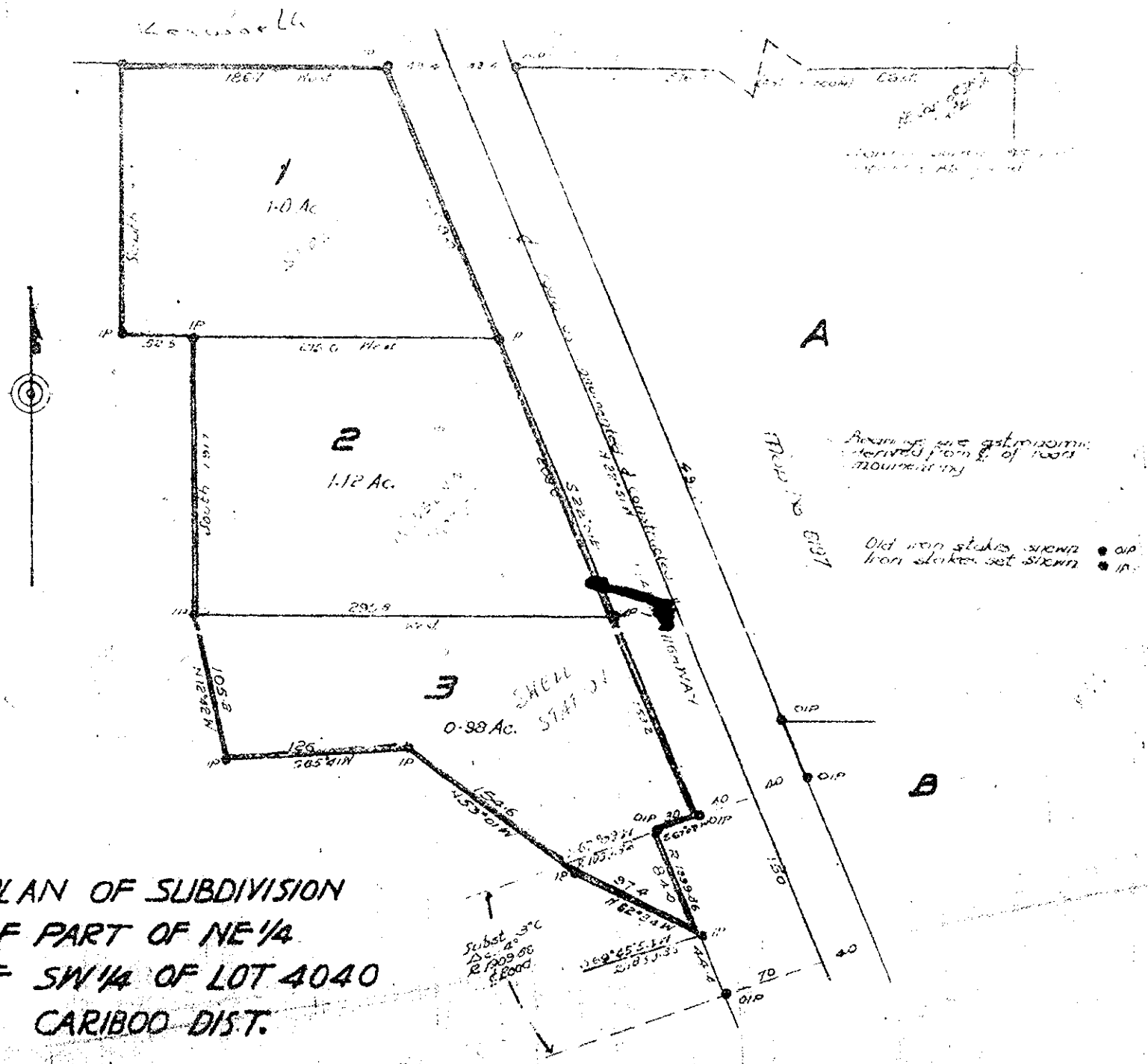


Map No. 6524
 Deposited in the Land Registry Office
 at Kamloops B.C. this 30th day of April 1954

R. G. Annandale
 Registrar

NW 1/4 L. 4040
 Map 1230



PLAN OF SUBDIVISION
 OF PART OF NE 1/4
 OF SW 1/4 OF LOT 4040
 CARIBOO DIST.

Scale: 100 ft = 1 1/2.

L. V. Fenn
 OWNER

[Signature]
 WITNESS

Approved under the Land
 Registry Act this 18th day
 of DECEMBER

A. J. Powering
 Asst. Chief Engineer
 Dept. of Public Works

I, J. J. Campbell of city of Prince George
 a British Columbia land surveyor make oath
 and say that I was present at and did
 personally superintend the survey represented
 by this plan and that the survey and plan
 are correct. The said survey was completed
 on the 20th day of Oct 1953
 and I have sworn before my
 this 20th day of Oct 1953

[Signature]
 A Notary Public and for Prov. of B.C.

14/10/1954