

6197

Map No
Deposited in the Land Registry Office
at Kamloops B.C. this 21 day of Aug. 1953

M. R. [Signature]
Deputy Registrar

NW 1/4 L. 4040
Map 1298

**SUBDIVISION OF PART
OF NE 1/4 OF SW 1/4 OF
LOT 4040
CARIBOO DIST.**

Scale: 200 ft = 1 in.

NE 1/4 OF SW 1/4

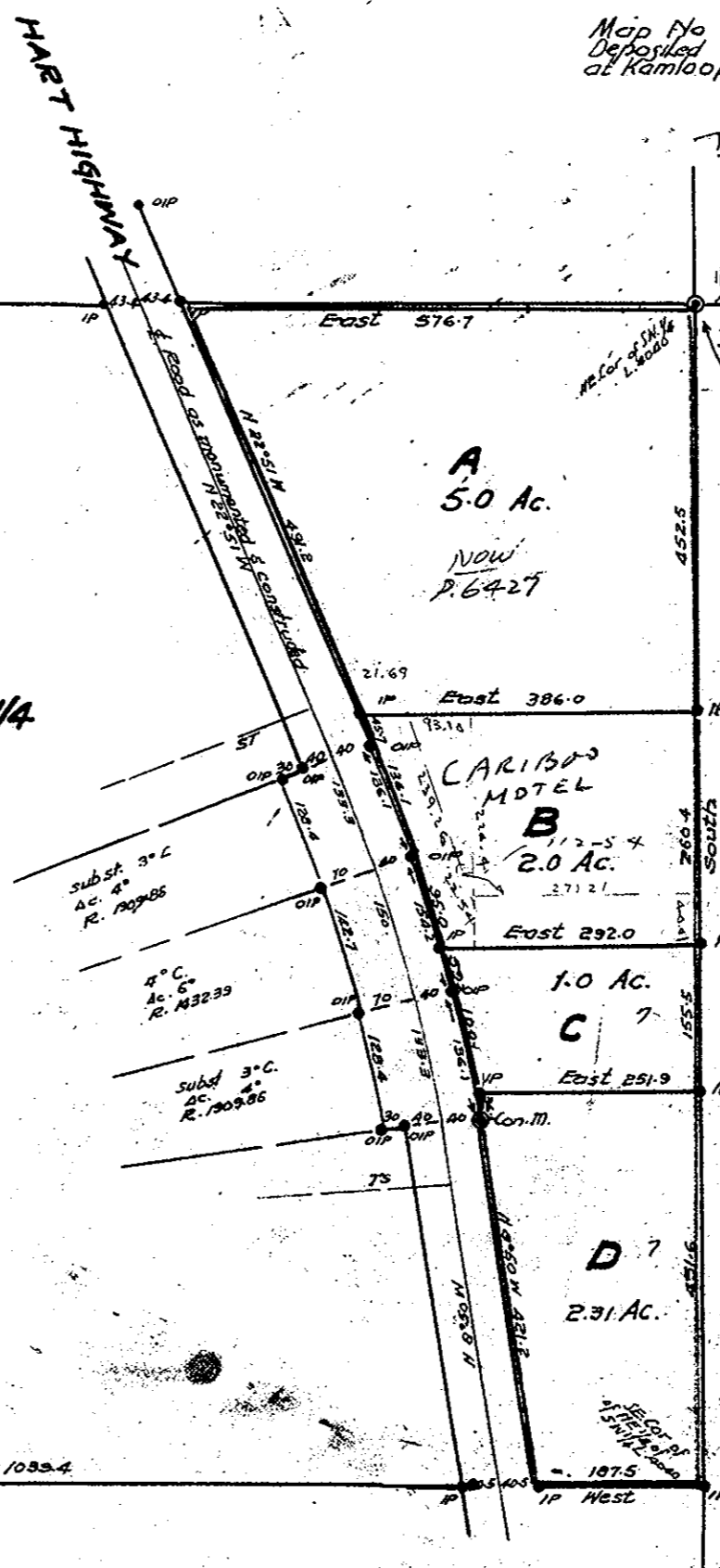
Bearings are astronomic derived
from food monumenting and north
boundary of SW 1/4

Standard survey monument shown
Old iron post set 2' from a wood post shown
Old concrete monument shown
Galvanized iron stakes set shown.

- PP
- OIP
- Con. Mon.
- IP

Standard survey posts shown
established by Dept. of Lands in 1952
Old iron posts & concrete monument
established by Dept. of Public Works
in 1948

14°
4' L.
200
4°
6'
AD 2762
ARC. 180'



[Signature]
OWNER

[Signature]
WITNESS

Approved under the Land
Registry Act this 3rd day of
August, 1953

[Signature]
Asst. Chief Engineer
Dept. of Public Works

SW 1/4 LOT 4040

I, J. O. F. Campbell of city of Prince George a B.C. Land Surveyor
make oath and say that I was present at and did
personally superintend the survey represented by this
plan and that the survey and plan are correct. The said
survey was completed on the 21st day of May 1953

Sworn before me
this 16 day of June 1953
[Signature]
Notary Public in & for Prov. of B.C.