

# PLAN OF SUBDIVISION OF PART OF PARCEL Z DISTRICT LOT 2508 PLAN 837 CARIBOO DISTRICT.

PLAN No. 6087  
Deposited in the Land Registry Office  
at Kamloops, B.C.  
this 12<sup>th</sup> day of June, 1953.

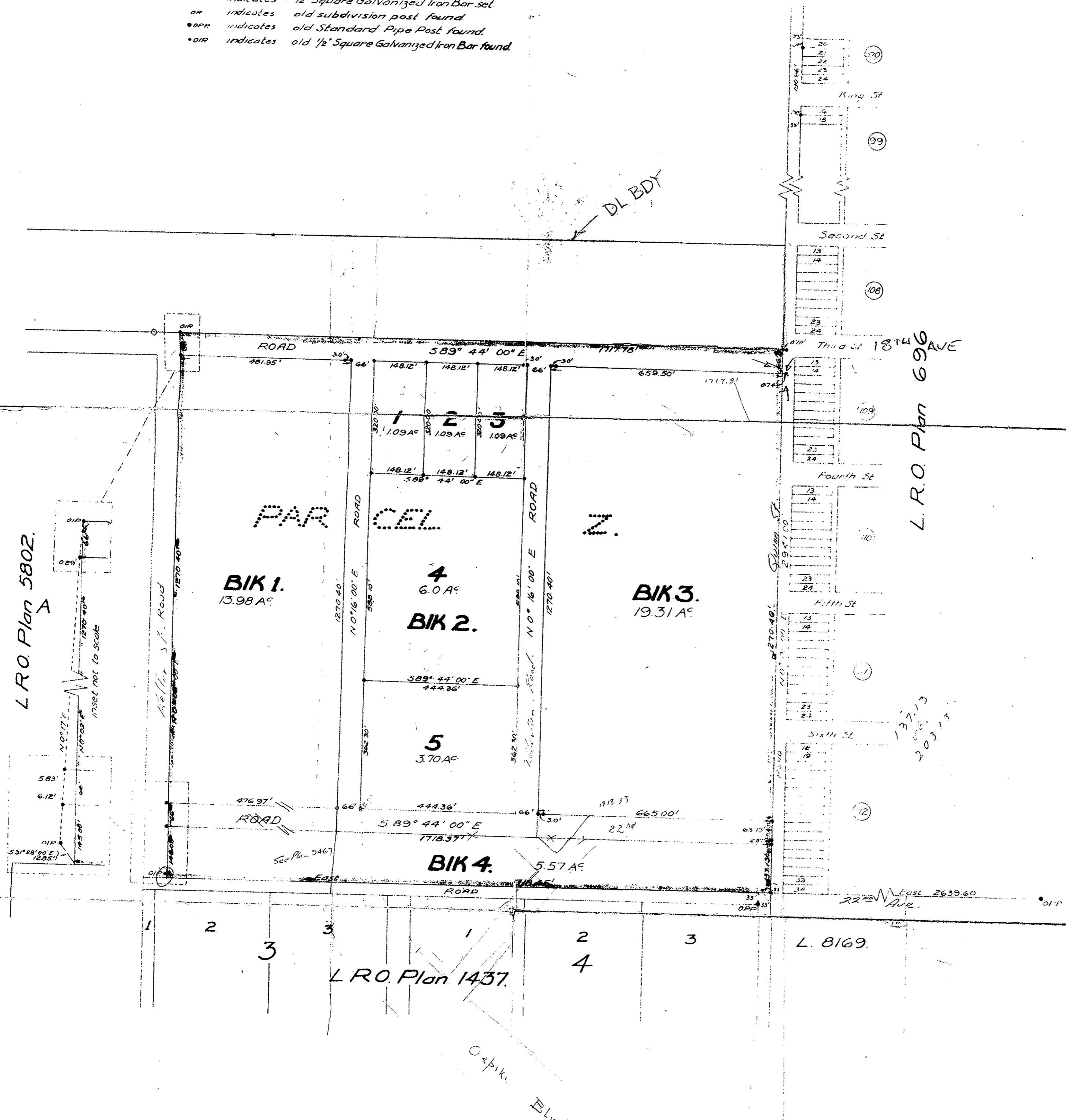
Registrar.

Scale: 1 inch = 200 feet.

### LEGEND

Bearings are astronomic and refered to the East Bdy of Parcel A, L.R.O. Plan 5802.

- indicates 1/2" Square Galvanized Iron Bar set.
- OR indicates old subdivision post found.
- OIP indicates old Standard Pipe Post found.
- OIP indicates old 1/2" Square Galvanized Iron Bar found.



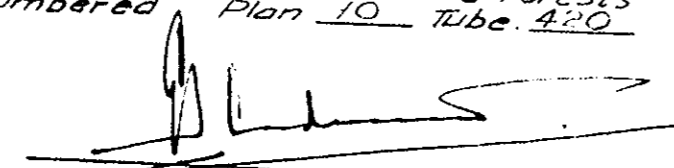
L.R.O. Plan 5802.

L.R.O. Plan 690

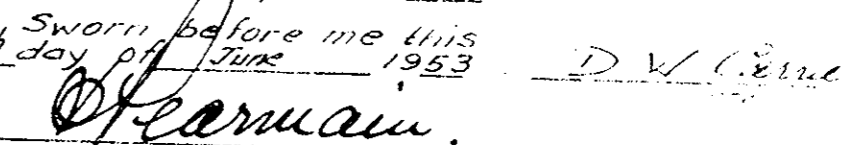
L.R.O. Plan 1437.

L. 8169.

I hereby certify that this is a true copy of the Official Plan on deposit in the Department of Lands and Forests and numbered Plan 10 Tab. 420.

  
 Surveyor General.  
 Victoria, B.C.  
 June 8, 1953

I, D. W. Carrier, of the City of Victoria British Columbia Land Surveyor, make oath and say that I was present at and did personally superintend the survey represented by this plan, and that the survey and plan are correct. The said survey was completed on the 26th day of May, 1953.

Sworn before me this 6th day of June, 1953.   
 D. W. Carrier  
 A Commissioner for Taking Affidavits within British Columbia

6087