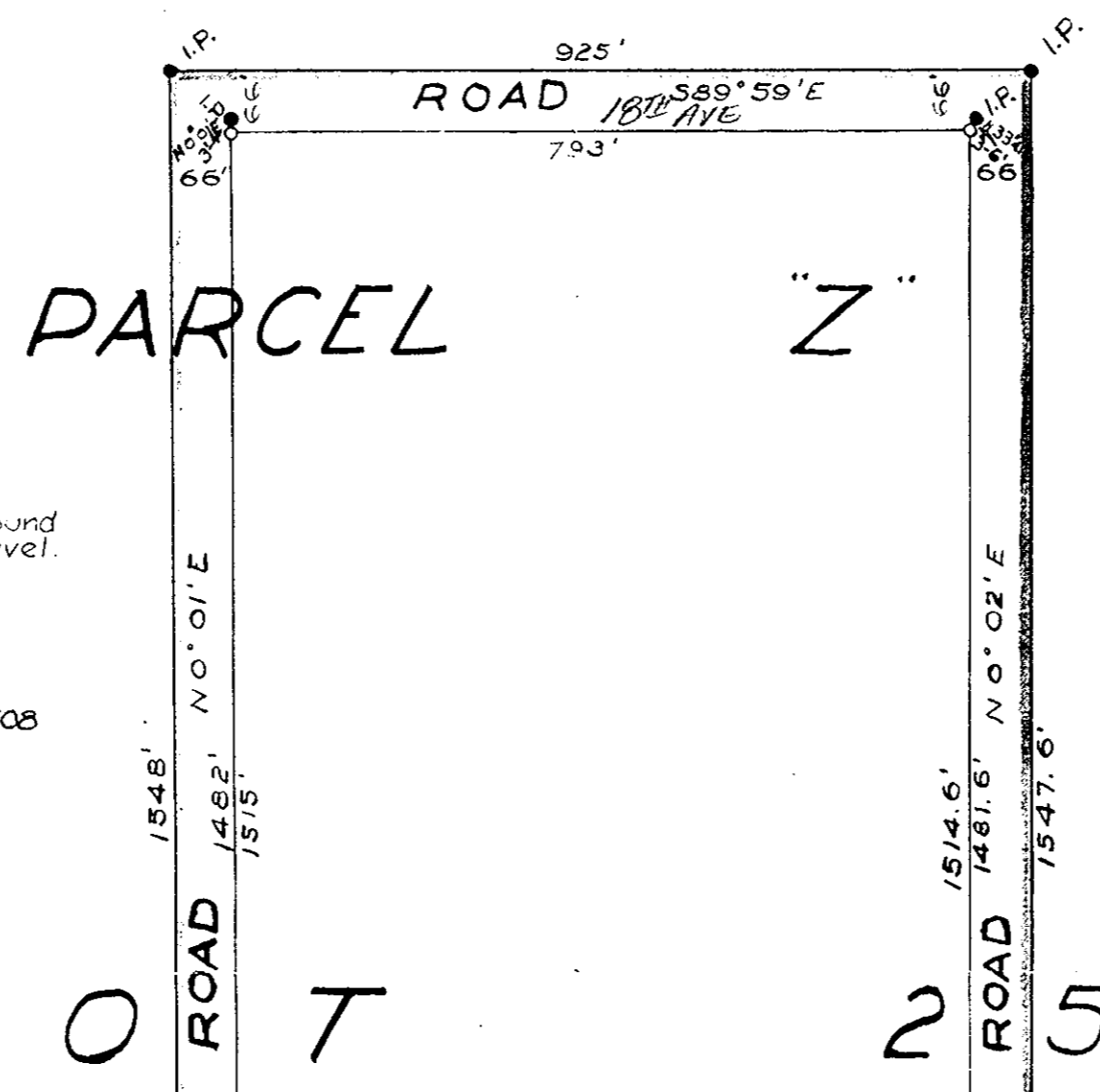
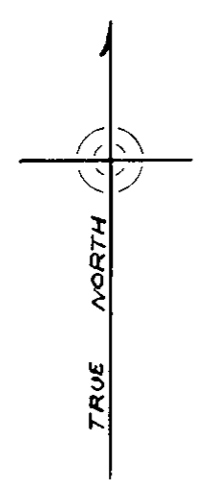


**PLAN 5802**  
 Deposited in the Land Registry  
 Office at Kamloops, B.C.  
 this 24 day of Sept 1952  
 C. T. McLean  
 Registrar

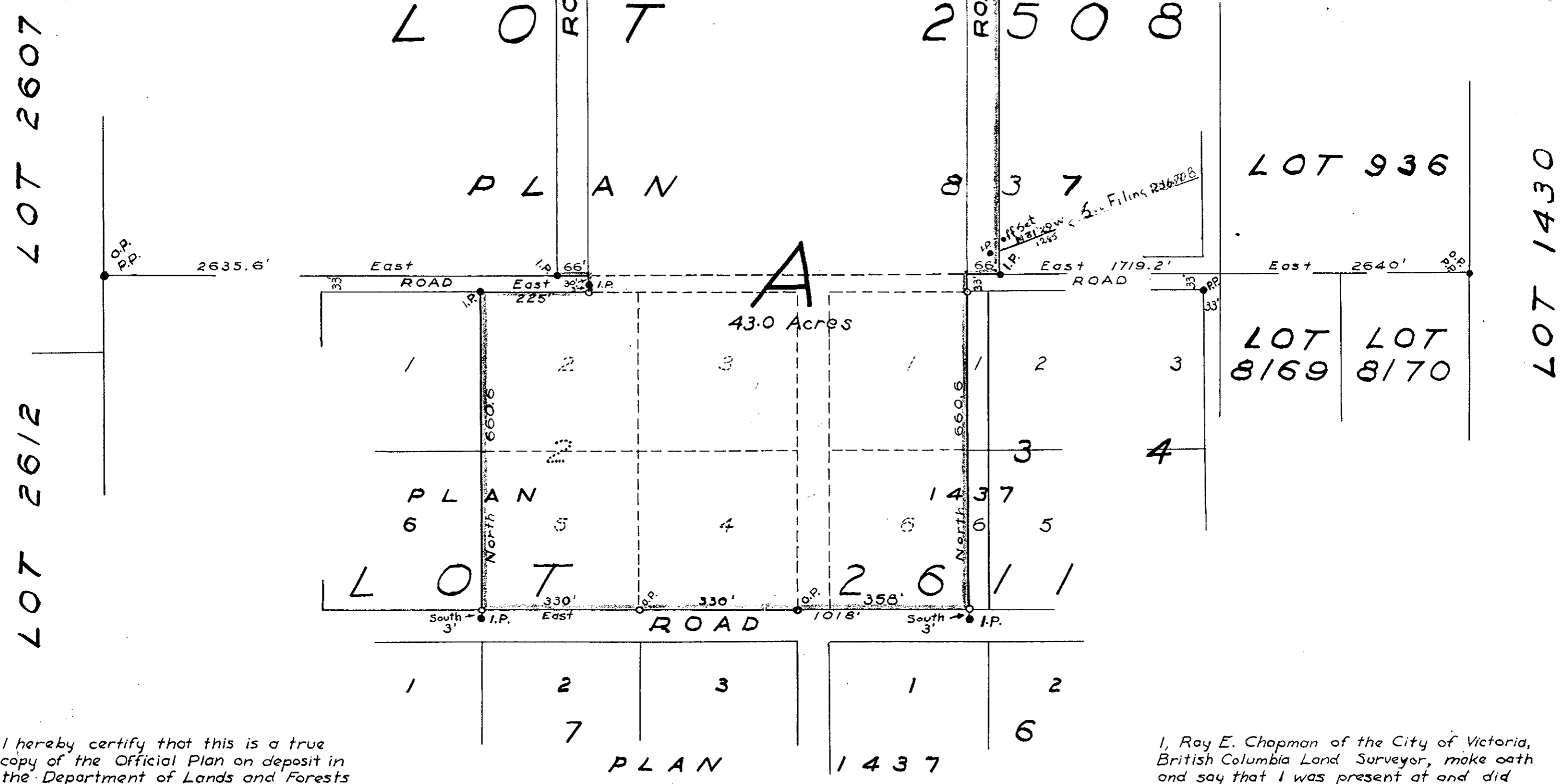
**SUBDIVISION OF  
 LOTS 2, 3, 4 AND 5, BLOCK 2, PARTS OF LOTS 1 AND 6, BLOCK 3  
 AND CERTAIN ADJOINING ROADS IN DISTRICT LOT 2611, PLAN 1437  
 AND PART OF PARCEL "Z" DISTRICT LOT 2508, PLAN 837  
 CARIBOO DISTRICT**

SCALE: 200 feet to 1 inch



**LEGEND**

- Indicates wooden post found in place.
  - P.P. Indicates standard pipe post planted.
  - I.P. Indicates 1/2" square iron bar driven to ground level.
  - Indicates wooden post set.
  - P.P. Indicates wooden post found in place and replaced by a standard pipe post
- Bearings are astronomic and are derived from the South boundaries of Lots 936 and 2508



I hereby certify that this is a true copy of the Official Plan on deposit in the Department of Lands and Forests and numbered: Plan 12 Tube 402

*J. J. Morrison*  
 Surveyor General  
 Victoria, B.C.  
 Sept. 19 1952

I, Ray E. Chapman of the City of Victoria, British Columbia Land Surveyor, make oath and say that I was present at and did personally superintend the survey represented by this plan. The said survey was completed the 29th day of May 1952. Sworn before me this 17th day of July 1952

*Ray E. Chapman*  
 A Commissioner for taking affidavits with in British Columbia.