

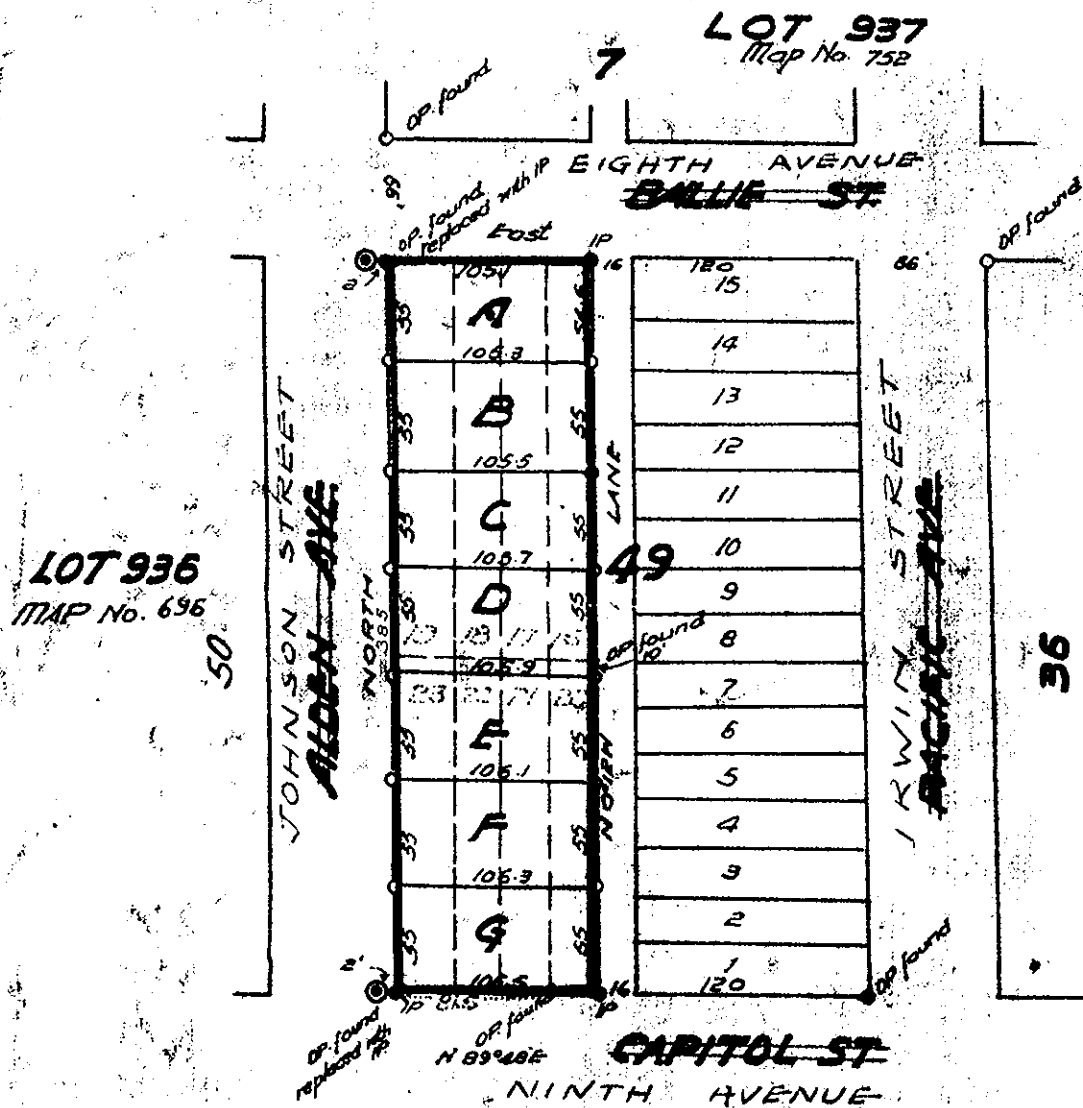
I hereby certify that this is a true copy of the Official Plan on deposit in the Department of Lands and Forests and numbered Plan 12 Tube 400

J. Morrison
 For Surveyor General
 Victoria, B.C.
 July 17, 1952.

FOR CHANGES IN
 STREET NAMES SEE
 FILING NO. 26127B

Map No 5796
 Deposited in the Land Registry
 Office at Kamloops B.C.
 this 22 day of Sep 1952

C.F. Maden
 Registrar



PLAN OF SUBDIVISION
 OF PART OF BLOCK 49
 LOT 1429
 CARIBOO DIST.
 MAP NO. 646

SCALE: 100 ft. = 1 inch

Approved under the Land Registry
 Oct this day of 1952

Chief Engineer
 Dept. of Public Works

I, J. G. F. Campbell of city of Prince George a British Columbia land surveyor make oath and say that I was present at and did personally superintend the survey represented by this plan and that the survey and plan are correct. The said survey was completed on the 20th day of June 1952

Sworn before me
 this 3rd day of July 1952. *J. G. F. Campbell*

L. H. Seaman
 A Notary Public in & for Prov. of B.C.

Pipe post in concrete block shown
 Galvanized iron stake 1/2" shown
 Wood 2" stake shown
 op found shown

Bearings are astronomic
 derived from South boundary
 of Baillie St. as shew on Map No. 646

5796