

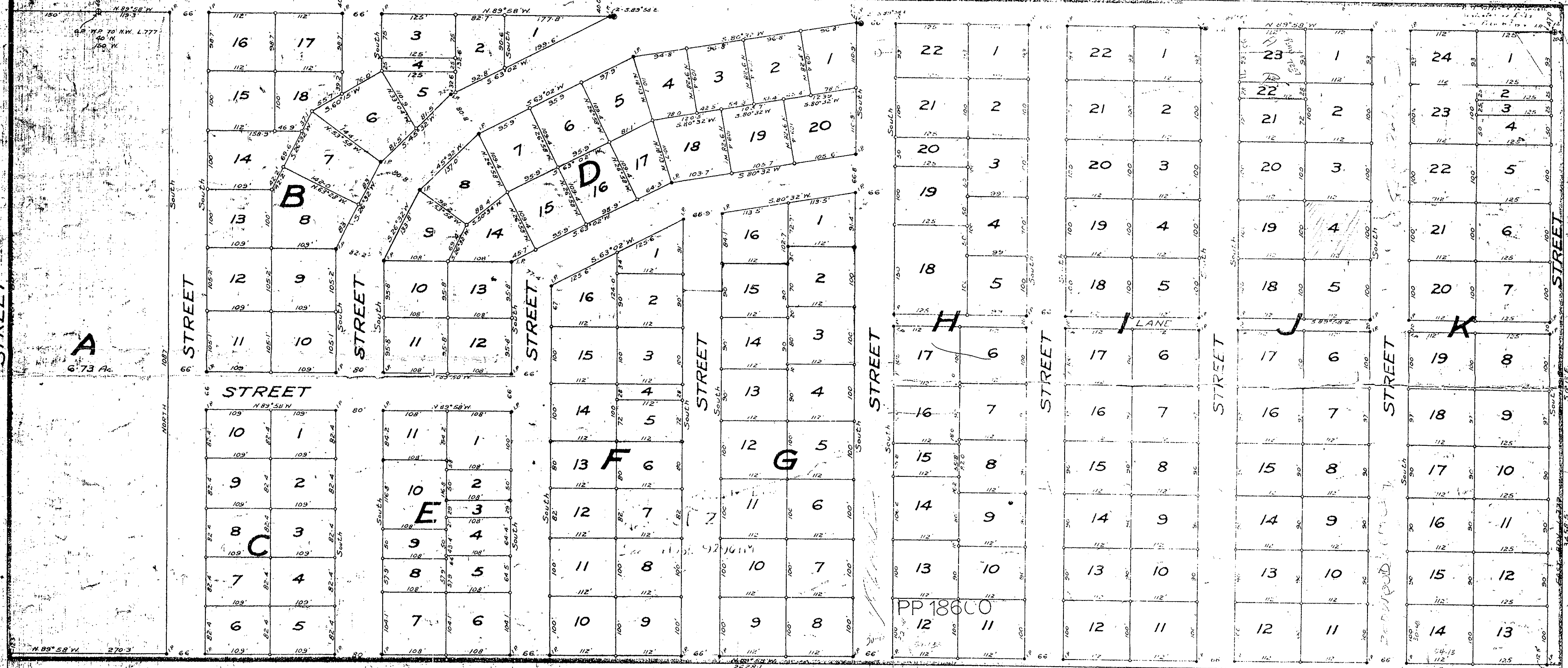
PLAN  
SUBDIVISION  
OF PART OF  
LOT 777  
CARIBOO DIST.  
Parcel 271, 1908 6771

PLAN N 5566  
DEPOSITED UNDER SECTION 10  
OF THE LAND REGISTRATION ACT  
THIS 8th DAY OF NOVEMBER 1950  
C. F. M. J.  
REGISTRAR

LOT 343  
L.R.O. PLAN 1268

L.R.O. PLAN 649  
LOT 777

PATRICIA AVE BK. 325 ALBERNI ST BK. 326 ATLIN ST BK. 327 COMOX ST BK. 328 KOOTENAY ST BK. 329 NANAIMO ST BK. 330 PRINCE RUPERT ST BK. 331 QUESNEL ST BK. 332 YANCOLIVER ST BK. 333 NELSON ST BK. 334 VICTORIA ST BK. 335



I hereby certify that this is a true copy of the Official Plan on deposit in the Department of Lands and Forests and numbered 10 Tube 33  
W. J. Leung  
Surveyor-General  
Victoria, B. C.  
18th January 1950.

Bearings are astronomic and are derived from South boundary of Lot 343, L.R.O. Plan 1268.

LEGEND

- Concrete Monument
- Standard Survey Post
- Galvanized Iron Bar (Witnessed by triangular stake)
- Wooden (white painted) 3/4" stakes at lot corners on street boundaries
- Wooden (white painted) 2" stakes at lot corners of block centre lines

L. J. A. Campbell, et al., Surveyors  
a better column was prepared with and on that was prepared at and in parallel with the survey represented by this plan, and that the survey and plan are correct and that the survey was completed on the 15th day of October 1950.

W. J. Leung  
Surveyor-General  
Victoria, B. C.  
18th January 1950.

SCALE 100 FT. = 1 IN.