

PLAN OF  
**PART OF LOT 483**  
 CARIBOO DISTRICT  
 BRITISH COLUMBIA  
 SCALE: 1 IN = 100 FT

Bearings are astronomic and are derived from West Bdy L. 483  
 DIP Denotes a galv. iron bar 1/2" square found in place.  
 IP Denotes a galv. iron bar 1/2" square placed in this survey

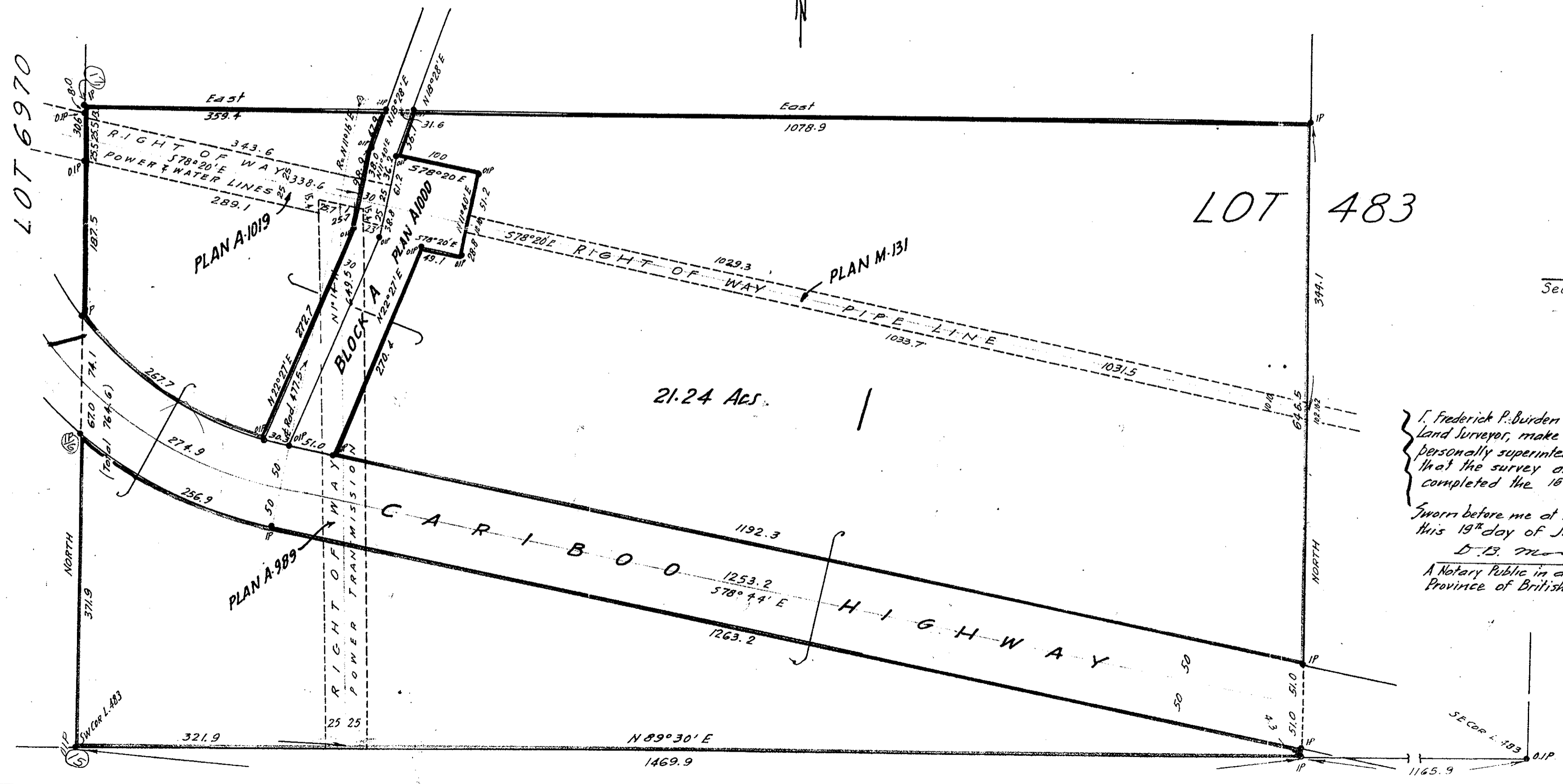
*John C. ...*  
 Registered Owner  
*Ralph ...*  
 Witness

PLAN No. 5565

Deposited in the Land Registry Office  
 at Kamloops, B.C. this 5<sup>th</sup> day of OCT 1951  
 C.B. ...  
 Registrar

Approved under the "Land Registry Act" this  
 27<sup>th</sup> day of JULY 1951

*J. J. Bowering*  
 Approving Officer - Dept. Public Works



LOT 483

*Rollins*  
 Secretary, Department of Transport

I, Frederick P. Burden of the City of Prince George, British Columbia, Land Surveyor, make oath and say that I was present at and did personally superintend the survey represented by this plan and that the survey and plan are correct. The said survey was completed the 18<sup>th</sup> day of June 1951.

Sworn before me at Prince George B.C. this 19<sup>th</sup> day of June 1951  
*D. B. ...*  
 A Notary Public in and for the Province of British Columbia