

PLAN OF SUBDIVISION  
of  
PART OF LOT 925  
Cariboo District.

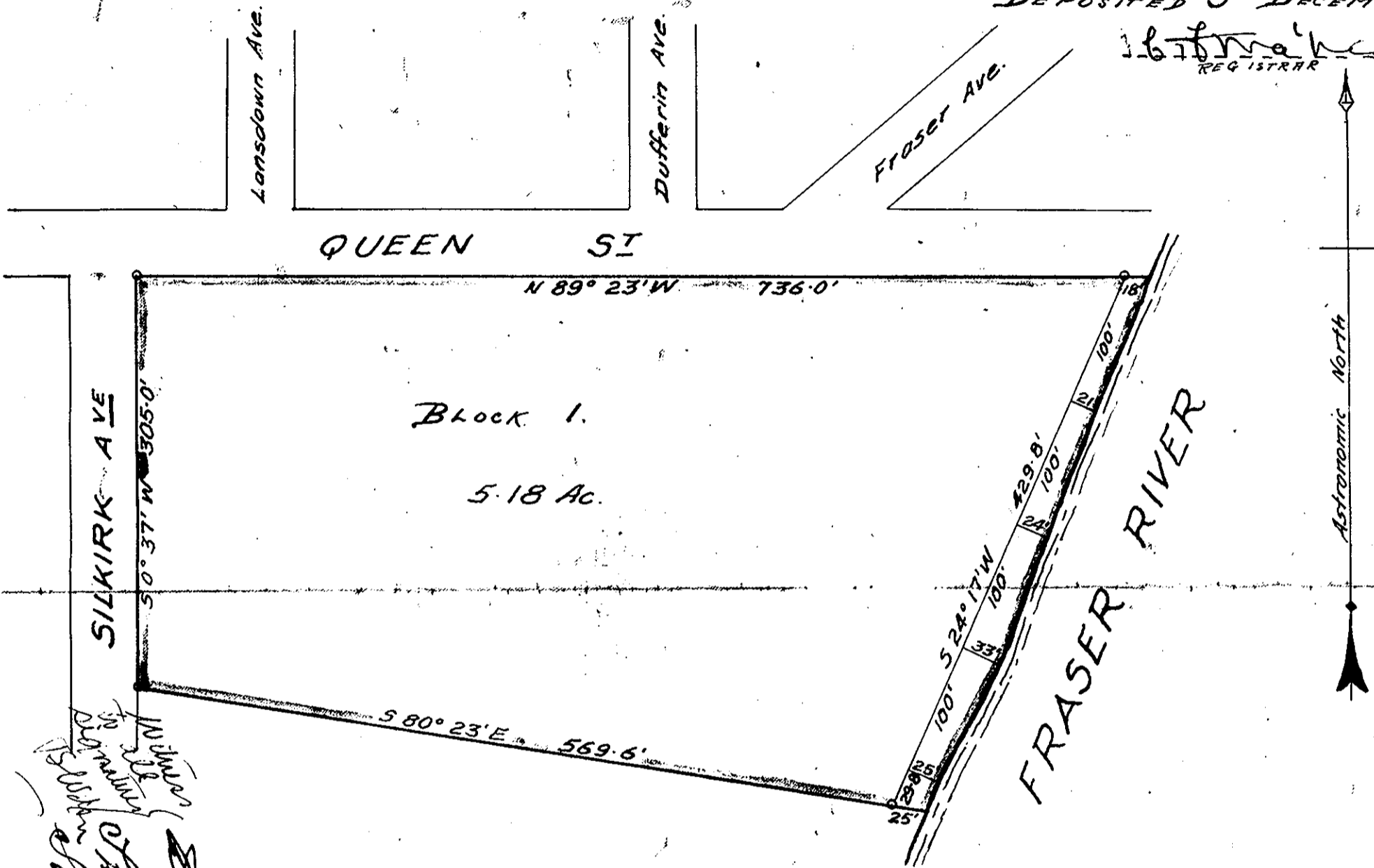
Registered Plan No. 867.

Scale 1"=100'

MAP No. 3524

DEPOSITED 5<sup>th</sup> DECEMBER 1946

*B. B. B. B.*  
REGISTRAR



*Witnessed by J. P. Distenfeld  
James Adams*

Note - Bearings are astronomic and are derived from the South boundary of Queen Street, this being the North Boundary of Lot 925. Corners marked on ground by durable wood posts, shown thus: ⊙

I, E.H. Burden of Prince George, British Columbia Land Surveyor, make oath and say that I was present at and did personally superintend the survey represented by this plan, and that the survey and plan are correct. The said survey was completed on the 25<sup>th</sup> day of June, 1945.

*E.H. Burden* B.C.L.S.

Inspected  
Sept. 6-1946

Sworn before me this ~~day of June, 1945.~~  
16<sup>th</sup> day of September - 1946

*E.H. Burden*

3524

APPROVED UNDER THE  
LAND REGISTRY ACT  
*A. H. H. H.*  
ASST. CHIEF ENGINEER  
DEPT. OF PUBLIC WORKS  
OCTOBER 15 1946