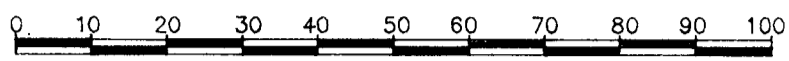


PLAN OF SUBDIVISION OF LOT 21, PLAN 7787 DISTRICT LOT 913 CARIBOO DISTRICT

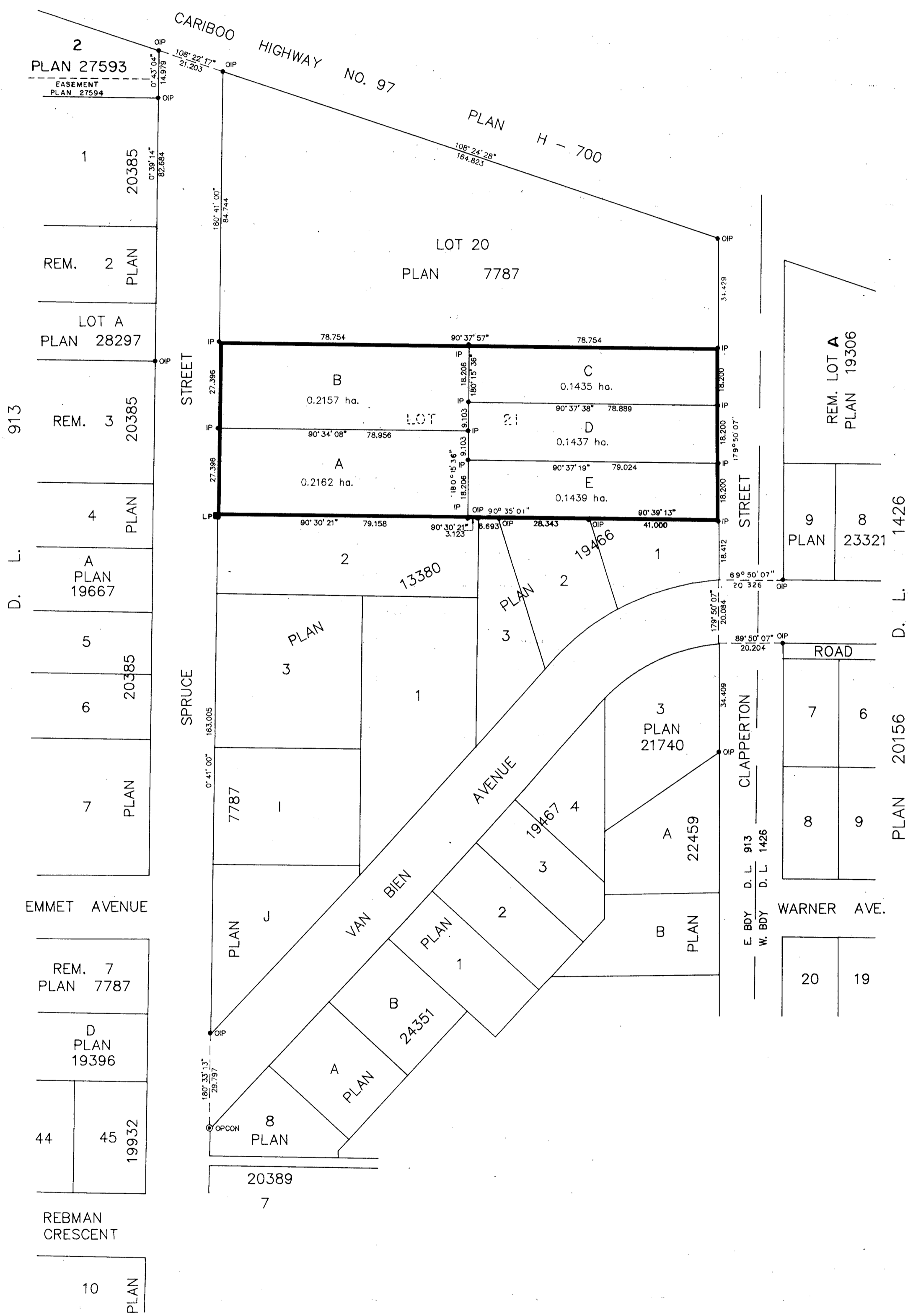
SCALE 1 : 1000 B.C.G.S. 93G.087



BEARINGS ARE ASTRONOMIC, DERIVED FROM THE EAST BOUNDARY OF SPRUCE STREET, PLAN 7787. DISTANCES ARE SHOWN IN METRES.

LEGEND

- OIP DENOTES AN OLD IRON PIN FOUND.
● IP DENOTES AN IRON PIN SET.
⊙ OPCGN DENOTES AN OLD CONCRETE MONUMENT FOUND.
■ LP DENOTES A LEAD PLUG SET.



Richard E. Lawrence
Richard E. LAWRENCE

Joyce E. Lawrence
Joyce E. LAWRENCE

Irvin Haddleton
IRVIN HADDELETON
2900 SPRUCE ST.
PRINCE GEORGE
REACTOR

APPROVED UNDER THE LAND TITLE ACT THIS 24th DAY OF October, 1990

C. E. Olt
APPROVING OFFICER, CITY OF PRINCE GEORGE.

I, RONALD L. JOHNS, A BRITISH COLUMBIA LAND SURVEYOR, OF PRINCE GEORGE, IN BRITISH COLUMBIA, CERTIFY THAT I WAS PRESENT AT AND PERSONALLY SUPERINTENDED THE SURVEY REPRESENTED BY THIS PLAN AND THAT THE SURVEY AND PLAN ARE CORRECT. THE SURVEY WAS COMPLETED ON THE 18TH DAY OF SEPTEMBER, 1990.

R.L. Johns
R.L. JOHNS, B.C.L.S.

THIS PLAN LIES WITHIN THE FRASER-FORT GEORGE REGIONAL DISTRICT.

R.L. JOHNS & ASSOCIATES
LEGAL AND ENGINEERING SURVEYS
P.O. BOX 824
PRINCE GEORGE, B.C. V2L 4V3
(604) 562-5759