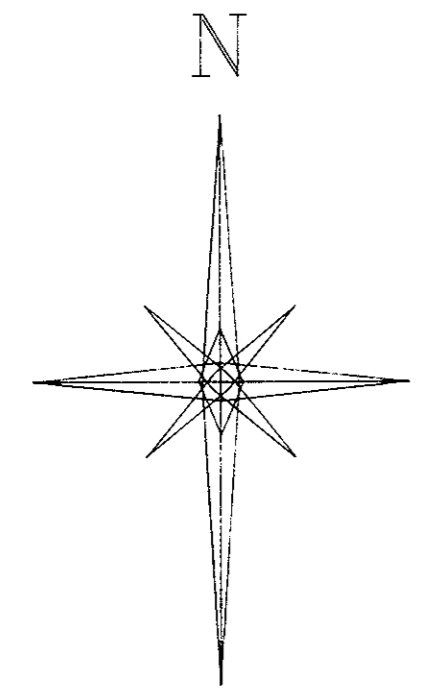


plotted (MK)

PLAN 34782

Deposited in the Land Title office at Prince George, B.C. this 22 day of Aug 1990.

W.G.G. Registrar



BLOCK A PLAN 2643

27 26 25

HIGHWAY RIGHT OF WAY PLAN 29298

BLOCK 52 PLAN 902 D.L. 629

ROAD

LOT 1 PLAN 6924

ROAD PLAN 902

90°00'00" 3.066

REM. LOT 22

REM. LOT 23

REM. LOT 24

LOT B PLAN 24799 D.L. 629

BLOCK 61 PLAN 902

D.L. 629

303.71 0'00"00"

180'00"00"

32.293 0'00"00"

180'00"00"

10.088 0'00"00"

Area of Road to be closed = 152.7 m².

LOT A PLAN 24799 D.L. 629

REM. LOT 25

90°00'00" 3.066

ROAD PLAN 902

REM. N.E. 1/4 D.L. 629

R/W Plan 22629

BLOCK 61 PLAN 902 D.L. 629

HIGHWAY RIGHT OF WAY PLAN H-633

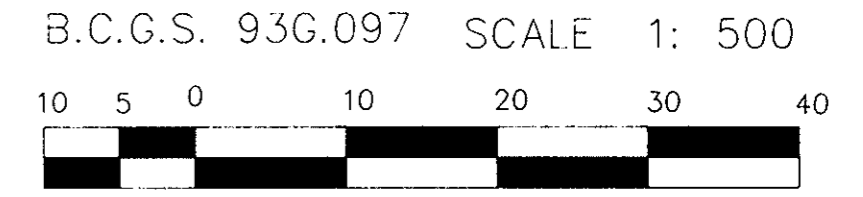
LOT

DISTRICT

GUNN ROAD

GAZETTED ROAD February 23, 1928.

EXPLANATORY PLAN TO ACCOMPANY BY-LAW 5417 CITY OF PRINCE GEORGE CLOSING PART OF ROAD AS SHOWN ON PLAN 902 AND ADJOINING REMAINDER OF LOTS 24 & 25 OF BLOCK 61, PLAN 902 AND LOTS A & B OF PLAN 24799. ALL IN D.L. 629 CARIBOO DISTRICT



Distances in metres and decimals thereof.

Certified correct according to Land Title Office Records, this 10 day of APRIL 1990.

V. Bartell

V. Bartell, B.C.L.S.

Approved under the Land Title Act, this 1st day of AUGUST 1990.

Approving Officer, City of Prince George.

This Plan lies within the Fraser Fort George Regional District

McWilliam Whyte Goble & Associates Prince George, Kamloops, Smithers, Williams Lake B.C. LAND SURVEYORS Phone 562-1196

REFERENCE NO. 89261