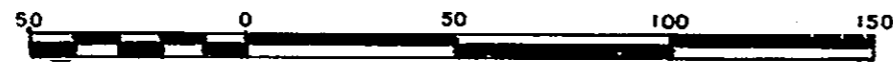


# 26-FF.226

EXPLANATORY PLAN OF EASEMENT  
OVER PART OF LOT 1, PLAN 26717,  
DISTRICT LOT 4029, CARIBOO DISTRICT.

B.C.G.S. 93G.097

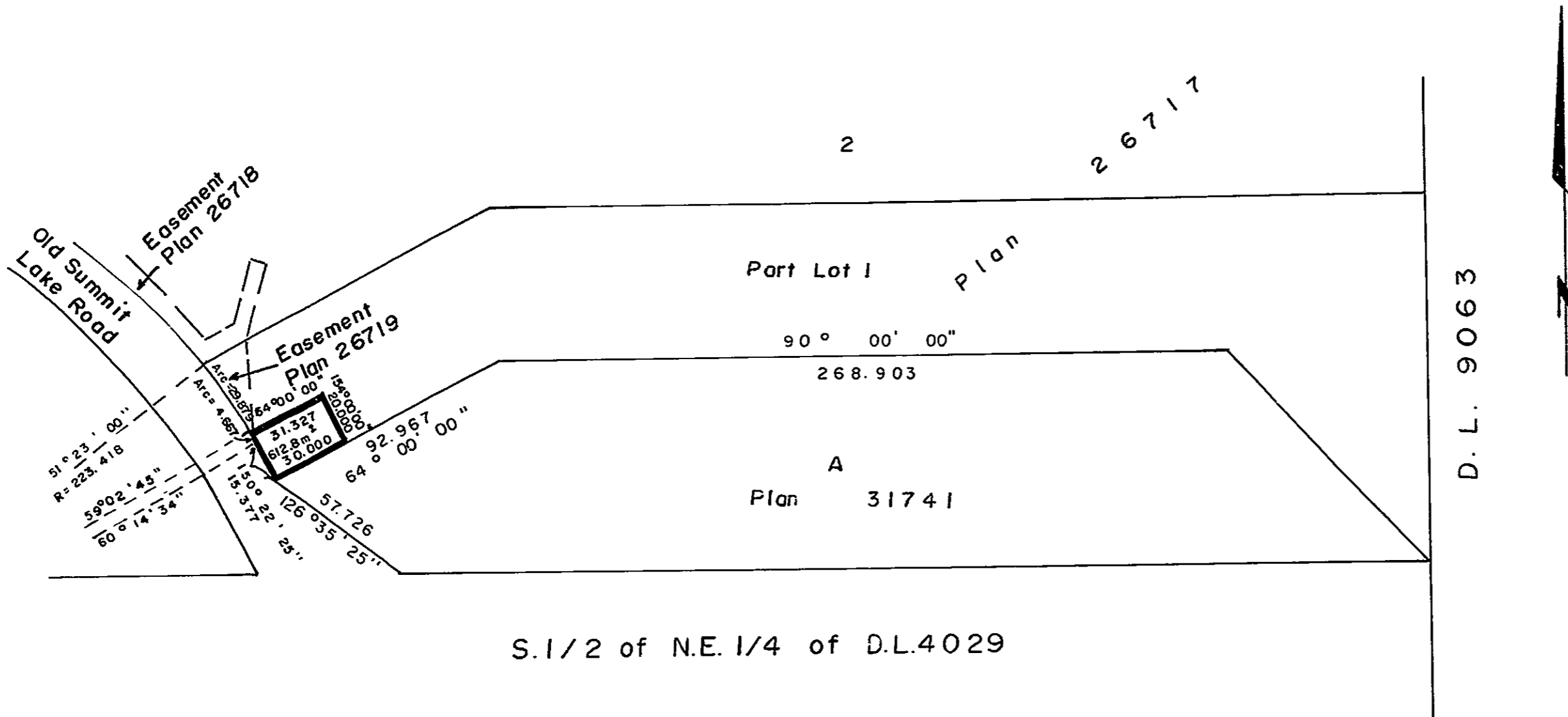
SCALE : 1 : 200 (Distances are in metres)



PLAN NO. 34764

Deposited in the Land Title Office at  
Prince George this 10 day of Aug  
1990.

--- W.G. Gandy ---  
Registrar



Certified Correct  
according to Land Title Office Records  
this 8<sup>th</sup> day of August, 1990.

Dale Keown  
D. Keown, B.C.L.S.

S. 1/2 of N.E. 1/4 of D.L. 4029

Book of Reference	
Description	Area
Pt. Lot 1, Plan 26717	612.8m <sup>2</sup>

This plan lies within the Fraser Fort  
George Regional District.

McWilliam, Whyte, Goble, & Associates,  
B.C. Land Surveyors,  
Prince George (604) 562-1196  
Kamloops - Smithers - Williams Lake

REF. NO. 90717