

45-11

Plotted

PLAN OF SUBDIVISION OF
REMAINDER OF LOT 15, PLAN
7787, DISTRICT LOT 913,
CARIBOO DISTRICT

PLAN NO. 34623

Deposited in the Land Title Office at Prince
George this day of , 19

BCGS. 93G. 097

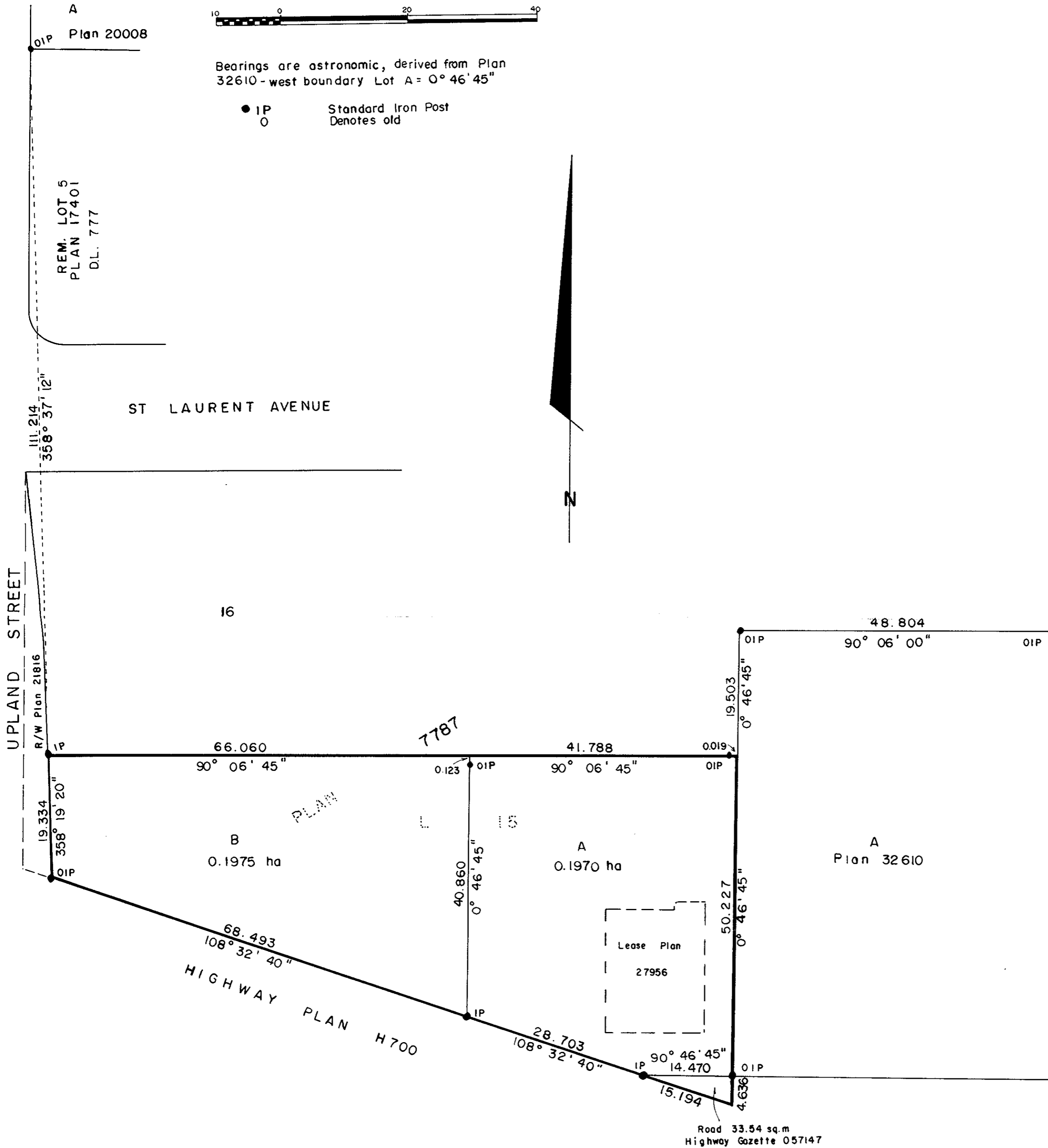
SCALE : 1:500 All distances are in metres.



Bearings are astronomic, derived from Plan
32610 - west boundary Lot A = 0° 46' 45"

● IP Standard Iron Post
○ Denotes old

Registrar



OWNER :

Abbotsford Warehousing Ltd.
[Signature]
Authorized Signatory

Approved under the Land Title Act
this day of 19

Approving Officer
Ministry of Transportation and Highways.

I, G. Kilbride, a British Columbia Land Surveyor of Prince George
in British Columbia, certify that I was present at and personally
superintended the survey represented by this plan and that the
survey and plan are correct. The survey was completed on the
29th day of November, 1989.

[Signature]
G. Kilbride, B.C.L.S.

Royal Trust Corporation of Canada

[Signature]
Authorized Signatory

Approved under the Land Title Act
this 31st day of MAY 1990

[Signature]
Approving Officer
City of Prince George

This plan lies within the Fraser Fort George Regional
District.

McWilliam Whyte Goble & Associates
B.C. Land Surveyors,
Prince George (604) 562-1196
Komloops - Smithers - Williams Lake

REF. NO. 89599 RA