

plotted GE

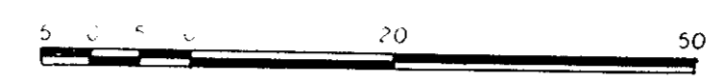
PLAN NO. 34607

Deposited in the Land Title Office at Prince George, B.C. this 13 day of June 1990

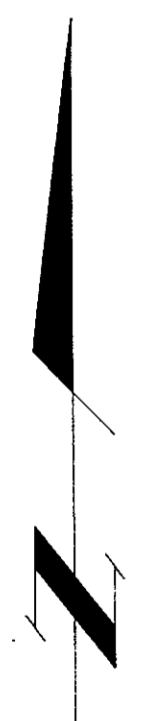
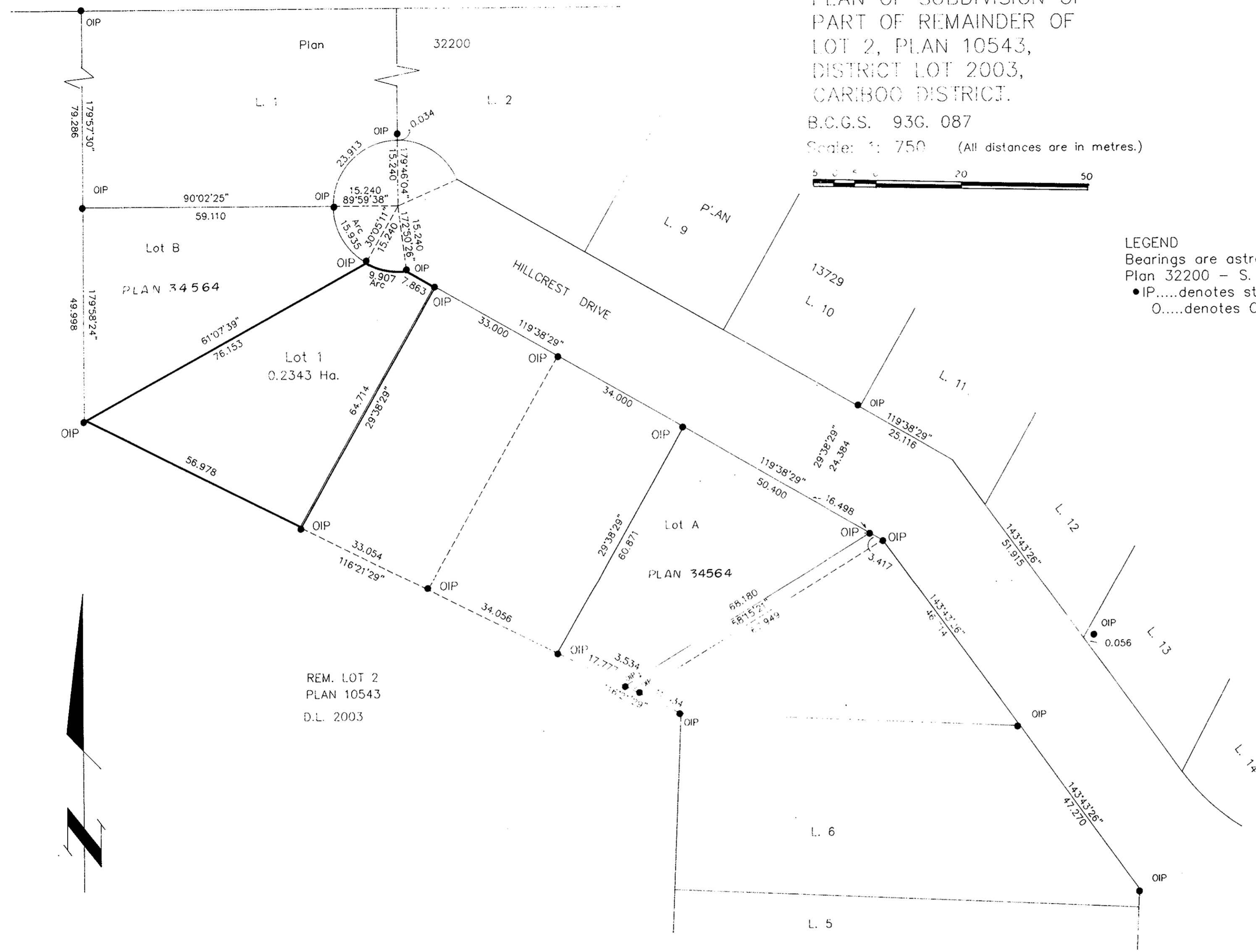
WGC Registrar

PLAN OF SUBDIVISION OF PART OF REMAINDER OF LOT 2, PLAN 10543, DISTRICT LOT 2003, CARIBOO DISTRICT.

B.C.G.S. 93G. 087
Scale: 1: 750 (All distances are in metres.)



LEGEND
Bearings are astronomic, derived from Plan 32200 - S. Bdy. L. 1, = 90° 02' 25"
●IP.....denotes standard Iron Pin
O.....denotes Old



REM. LOT 2
PLAN 10543
D.L. 2003

I, Gordon Kilbride, a British Columbia Land Surveyor of Prince George in British Columbia, certify that I was present at and personally supervised the survey represented by this plan and that the survey and plan are correct. The survey was completed on the 22nd day of May, 1990.

Gordon Kilbride, B.C.L.S.

This plan lies within the Fraser Fort George Regional District.

OWNER: The Roman Catholic Episcopal Corporation of Prince Rupert
Authorized Signatory
Print Name

Witness
Print Name
Address
Prince George B.C.
Postal Code
Occupation

Approved under the Land Title Act this 31st day of May 1990
Approving Officer
City of Prince George.

McWilliam, Whyte, Goble & Associates B.C. Land Surveyors, Prince George (604) 562-1196 & 564-5322 (fax 562-3656) Kamloops - Smithers - Williams Lake		
F.B.- SD 19	D.L.- 2003	REF. NO.- 89487 A