

PLAN OF SUBDIVISION OF PART OF LOT 1, PLAN 30863,
D.L. 1605, CLOSED ROAD, PLAN 34386, D.L. 1605,
AND PART OF REMAINDER OF THE S.W. 1/4 D.L. 754,
CARIBOO DISTRICT.

B.C.G.S. 936.087

Scale: 1 : 500 (All distances are in metres)



Bearings are astronomic derived from Plan 34386.

- i.P. Standard Iron Post.
- Denotes old.

Plotted.

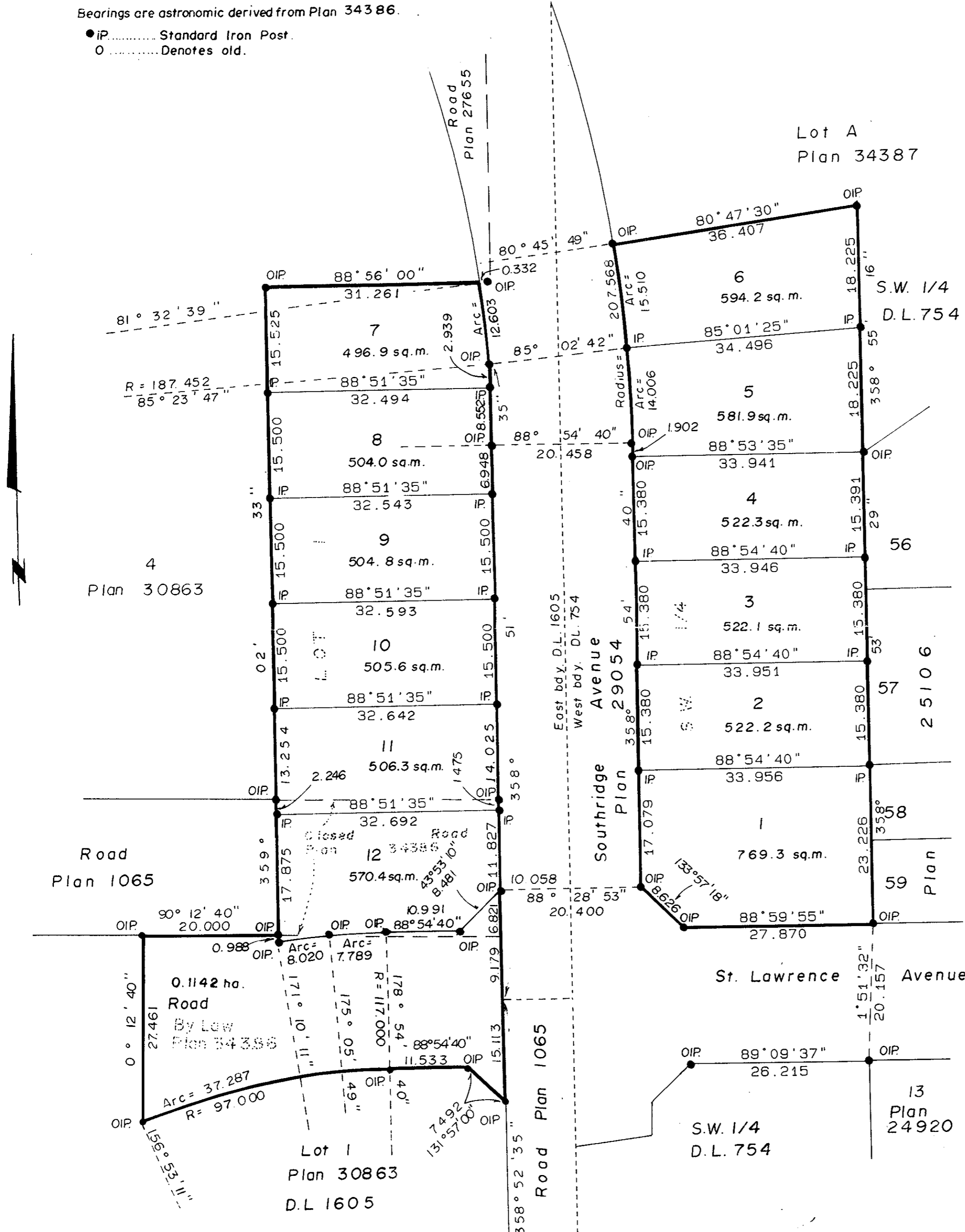
HE

PLAN NO. 34562

Deposited in the Land Title Office at Prince
George this 15 day of May 1990.

W.G.S.
Registrar

Lot A
Plan 34387



I, G. Kilbride, a British Columbia Land Surveyor, of
Prince George in British Columbia, certify that I was
present at and personally superintended the survey
represented by this plan, and that the survey and
plan are correct. The survey was completed on the
12th day of July, 1989.

Gordon Kilbride
G. Kilbride, B.C.L.S.

Approved under the Land Title Act 90
this 24th day of February 1989.

[Signature]
Approving Officer
City of Prince George.

Barbican Developments Ltd.
(Incorp. No. 298881)

Mortgage: Royal Bank of Canada
BY ITS LAWFUL ATTORNEYS

[Signatures]
James Buchanan, JACOB
ACCOUNT MANAGER
Authorized Signatories
ROBERT WHEATLEY
ACCOUNT MANAGER

[Signature]
Joyita Duran
165 WEST GEORGIA ST.
VANCOUVER, B.C. V6E 3S5
SECRETARY
(WITNESS TO TWO SIGNATURES)

[Signature]
Authorized Signatories

This plan lies within the Fraser Fort George
Regional District.

McWilliam, Whyte, Goble, & Associates,
B.C. Land Surveyors,
Prince George (604) 562-1196
Kamloops - Smithers - Williams Lake
REF. NO. 89072 - 2 RB61