

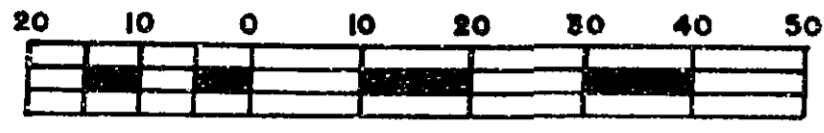
26-FF

REFERENCE PLAN OF EASEMENT FOR POWER LINES THROUGH PART OF LOT A DISTRICT LOT 2061, CARIBOO DISTRICT PLAN 33603

PLAN 34377

DEPOSITED IN THE LAND TITLE OFFICE
PRINCE GEORGE, B.C.
THIS 26 DAY OF FEB 1990

w. J. Sandy



SCALE 1:1000

B.C.G.S. 93G-097

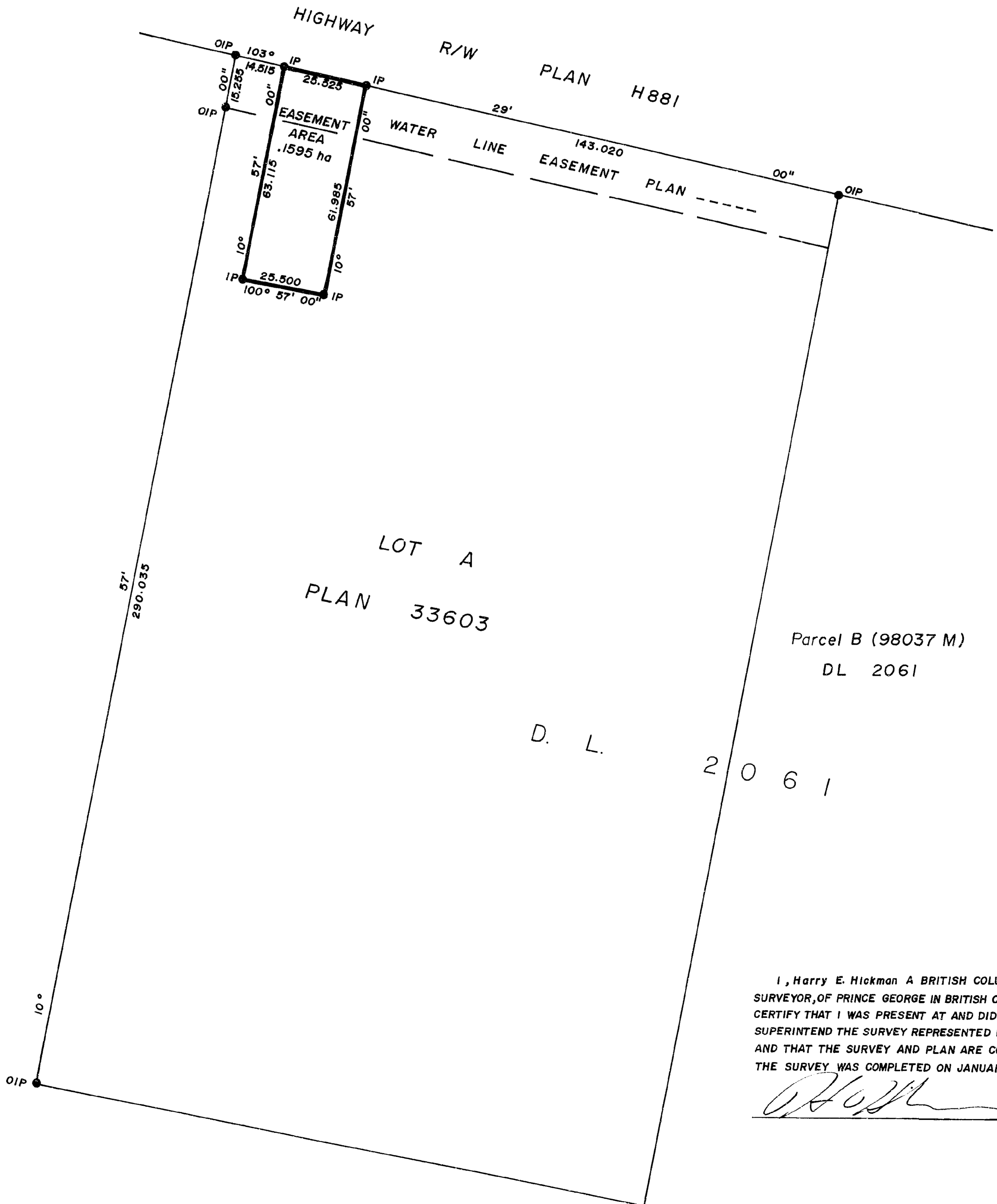
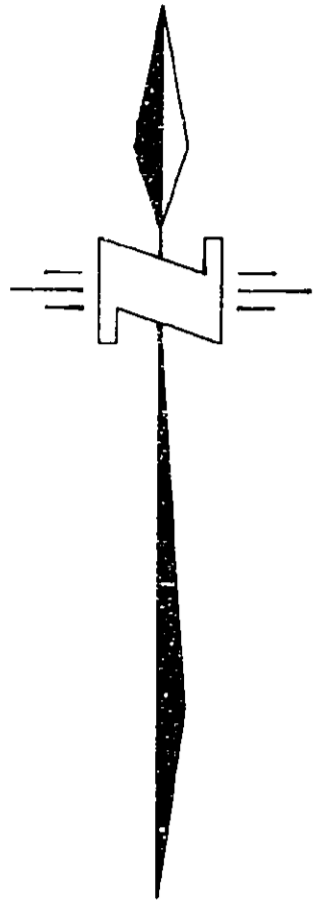
LEGEND

BEARINGS ARE ASTRONOMIC DERIVED FROM THE WEST BOUNDARY OF LOT A
PLAN 33603, DL 2061 C.D. (10° 57' 00")

ALL DISTANCES ARE SHOWN IN METRES AND DECIMALS THEREOF.

- OIP DENOTES OLD IRON POST FOUND
- IP DENOTES IRON POST SET

BOOK OF REFERENCE	
DESCRIPTION	AREA
LOT A DL 2061 PL 33603	0.1595 ha



THIS PLAN LIES WITHIN THE FRASER-FORT GEORGE REGIONAL DISTRICT.

I, Harry E. Hickman A BRITISH COLUMBIA LAND SURVEYOR, OF PRINCE GEORGE IN BRITISH COLUMBIA, CERTIFY THAT I WAS PRESENT AT AND DID PERSONALLY SUPERINTEND THE SURVEY REPRESENTED BY THIS PLAN AND THAT THE SURVEY AND PLAN ARE CORRECT. THE SURVEY WAS COMPLETED ON JANUARY 24, 1990.

[Signature] B.C.L.S.

McELHANNEY ASSOCIATES
PROFESSIONAL LAND SURVEYORS
1892 3rd. AVENUE
PRINCE GEORGE, B.C. V2M 1G4
FILE 412-05040

SURVEY ALLOCATION: 60L336

805-57-C206 Private