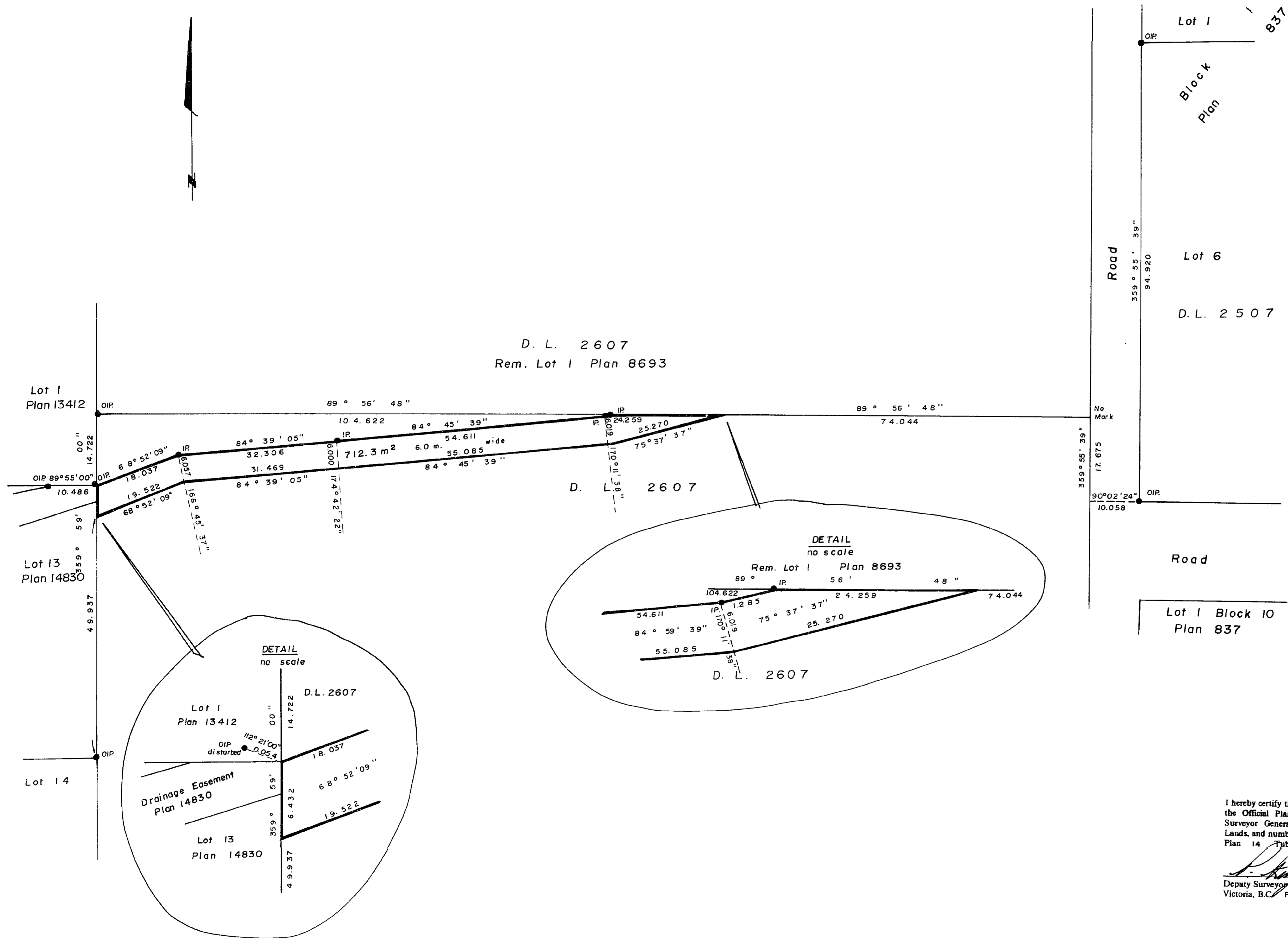


26FF.226

PLAN NO. 34358

Deposited in the Land Title Office at  
Prince George this 12 day of FEB. 1990

*W. J. Seely*  
Registrar



PLAN OF STATUTORY RIGHT-OF-WAY WITHIN D.L. 2607, CARIBOO DISTRICT.

B.C.G.S. 936.096

Scale: 1:500 (All distances are in metres)



Bearings are astronomic derived from East bdy. Lot 13 Plan 14830 shown as 359° 59' 00".

- IP.....Standard Iron Post.
- .....Denotes old.

I, D. Keown, a British Columbia Land Surveyor, of Prince George in British Columbia, certify that I was present at and personally superintended the survey represented by this plan and that the survey and plan are correct. The survey was completed on the 8<sup>th</sup> day of September 1989.

*D. Keown*  
D. Keown, B.C.L.S.

I hereby certify that this is a true copy of the Official Plan on deposit with the Surveyor General, Ministry of Crown Lands, and numbered Plan 14 Tube 1477.  
*D. Keown*  
Deputy Surveyor General  
Victoria, B.C. February 2, 1990

This plan lies within the Fraser Fort George Regional District.

Book of Reference	
Description	Area
D. L. 2607	712.3 m <sup>2</sup>

McWilliam, Whyte, Goble & Associates,  
B.C. Land Surveyors,  
Prince George (604) 562-1196  
Kamloops - Smithers - Williams Lake  
REF. NO. 88533