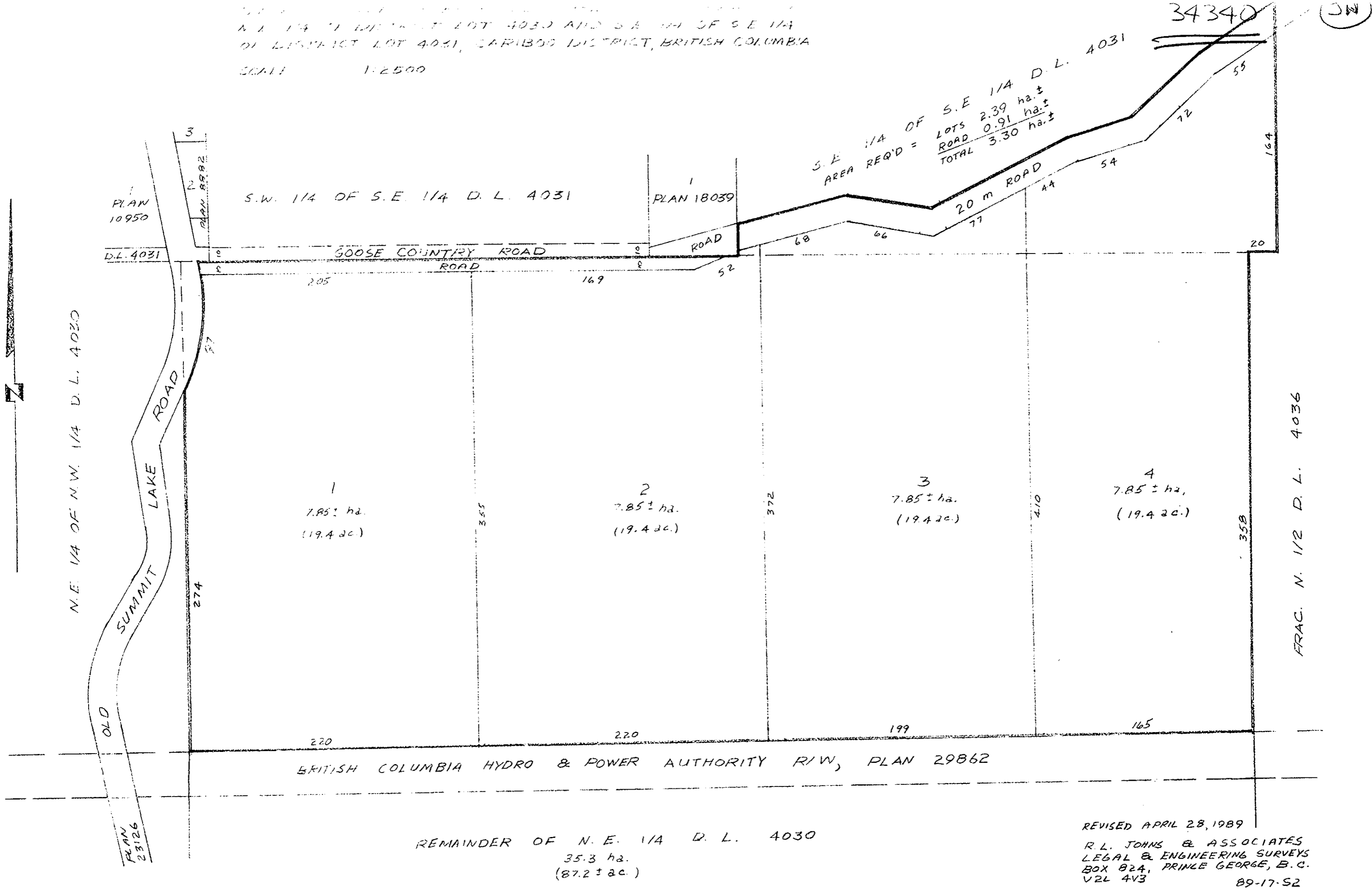


N.E. 1/4 OF N.W. 1/4 D.L. 4030 AND S.E. 1/4 OF S.E. 1/4 OF DISTRICT LOT 4031, CARIBOO DISTRICT, BRITISH COLUMBIA

SCALE 1:2500

34340 (JW)



REVISED APRIL 28, 1989
 R.L. JOHNS & ASSOCIATES
 LEGAL & ENGINEERING SURVEYS
 BOX 824, PRINCE GEORGE, B.C.
 V2L 4V3 89-17-52