

REFERENCE PLAN OF CONSOLIDATION
OF LOTS 1, 2 AND D, BLOCK 316,
PLAN 1268, D.L. 343, CARIBOO DISTRICT.

JL

B.C.G.S. 936.097

SCALE: 1:750 (All distances are in metres.)



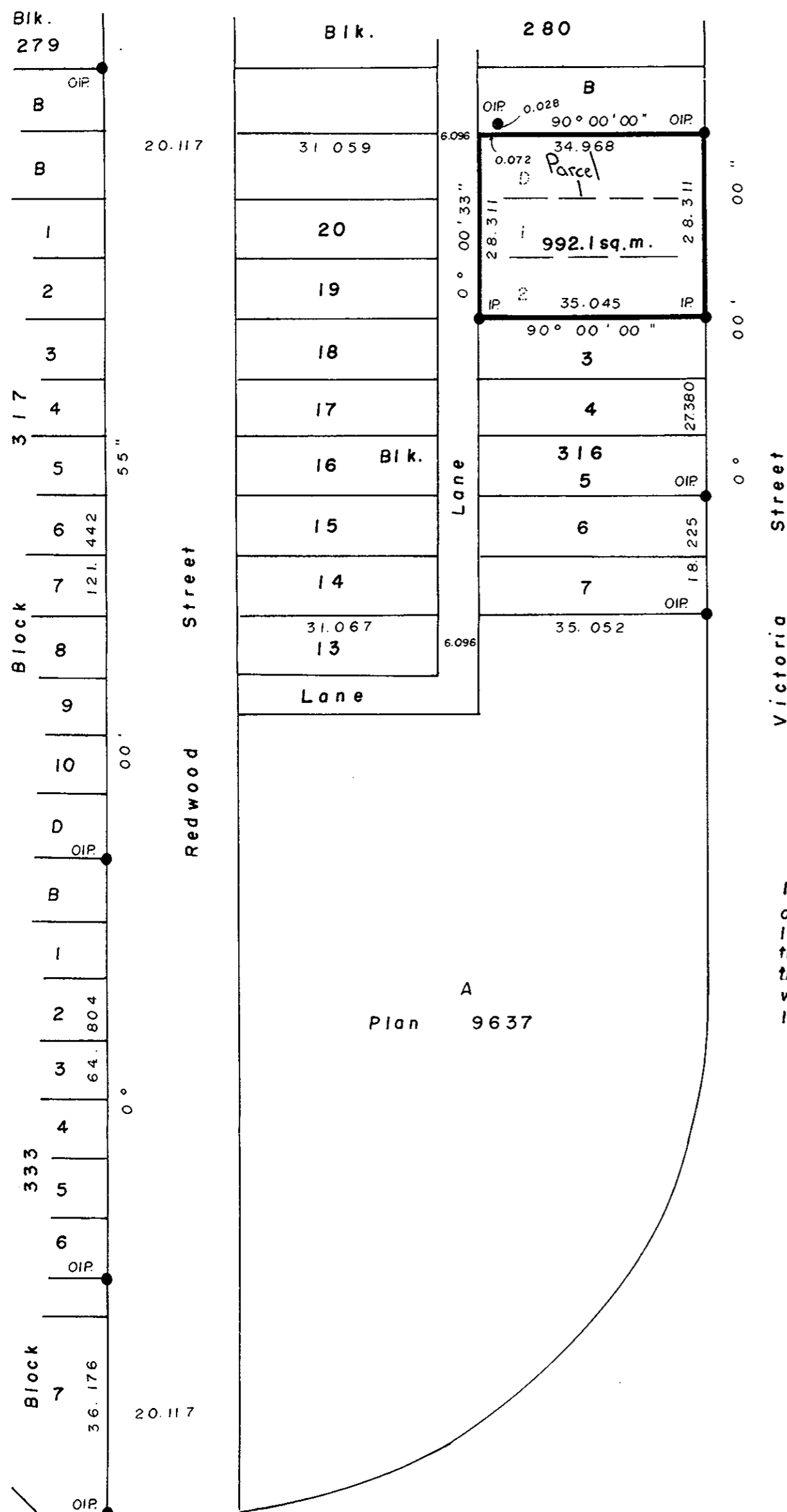
Bearings are astronomic derived from Plan 1268
East bdy. Blk. 316 = 0°00'00"

- IP..... Standard Iron Post.
- Denotes old.

PLAN NO. 34317

Deposited in the Land Title Office at
Prince George this 15 day of Jan
1989.

W.C.G.
Registrar



I, G. Kilbride, a British Columbia Land Surveyor,
of Prince George in British Columbia certify that
I was present at and personally superintended
the survey represented by this plan and that
the survey and plan are correct. The survey
was completed on the 24 day of October
1989.

Gordon Kilbride
G. Kilbride, B.C.L.S.

This plan lies within the Fraser Fort
George Regional District.

McWilliam, Whyte, Goble & Associates,
B.C. Land Surveyors,
Prince George (604) 562-1196
Kamloops - Smithers - Salmon Arm
REF. NO. 89623 RM 62