

JL

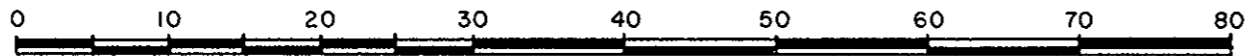
PLAN NO. 34264

DEPOSITED IN THE LAND TITLE OFFICE AT PRINCE GEORGE, B.C., THIS DAY OF _____, 1989

REGISTRAR

PLAN OF SUBDIVISION OF LOTS 11, 12, 13, & 14, BLOCK 210, PLAN 1268, ADJACENT CLOSED PERRY CIRCLE, PLAN 34263 AND REMAINDER OF BLOCK 0, PLAN 1268, DISTRICT LOT 343, CARIBOO DISTRICT - BRITISH COLUMBIA B.C.G.S. 936.097

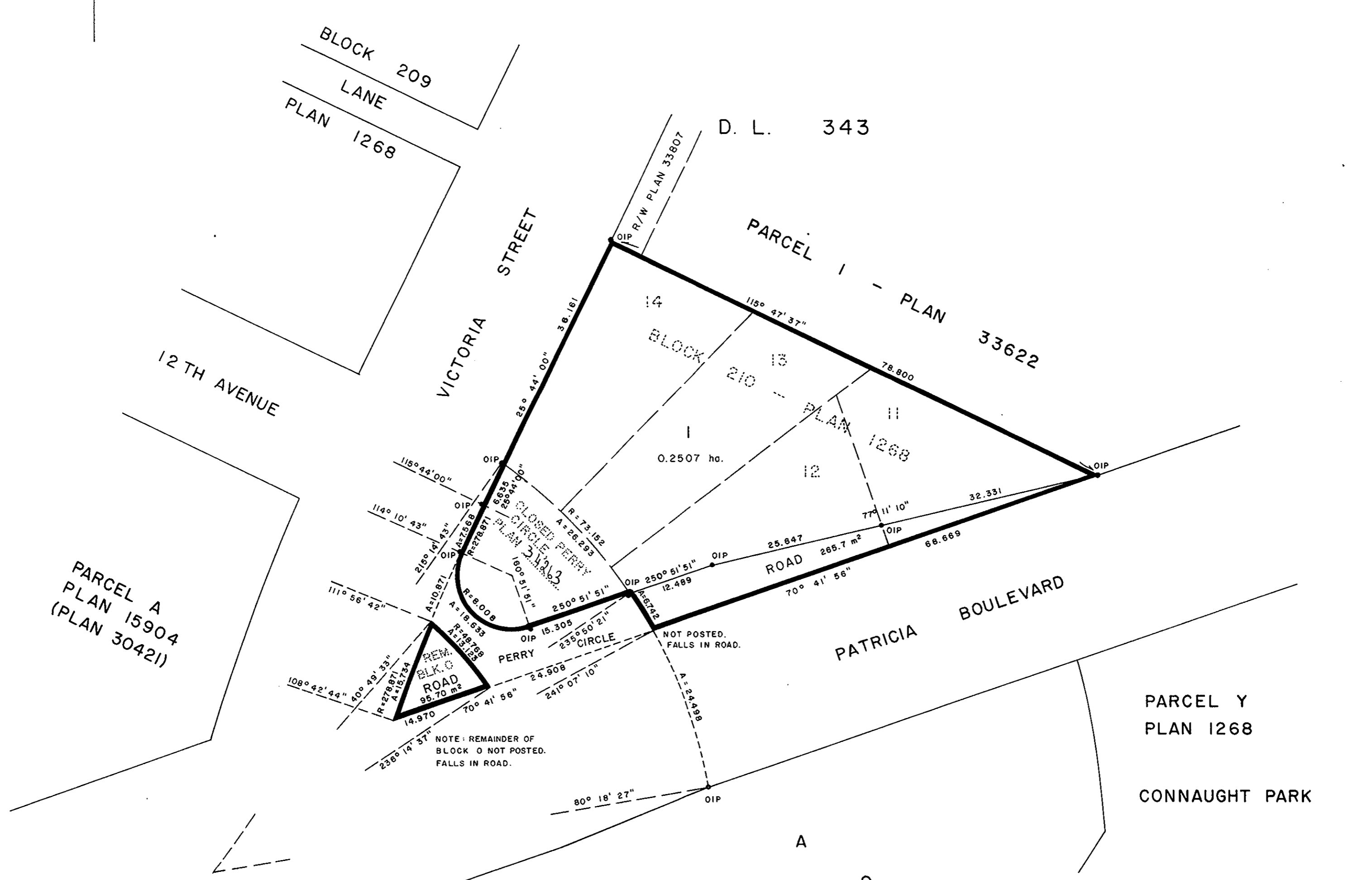
SCALE 1:500



BEARINGS ARE ASTRONOMIC, DERIVED FROM THE EASTERLY BOUNDARY OF VICTORIA STREET, PLAN 1268.

LEGEND

• OIP DENOTES AN OLD IRON PIN FOUND.



PARCEL A PLAN 15904 (PLAN 30421)

PARCEL Y PLAN 1268 CONNAUGHT PARK

I, RONALD L. JOHNS, A BRITISH COLUMBIA LAND SURVEYOR, OF PRINCE GEORGE, IN BRITISH COLUMBIA, CERTIFY THAT I WAS PRESENT AT AND PERSONALLY SUPERINTENDED THE SURVEY REPRESENTED BY THIS PLAN AND THAT THE SURVEY AND PLAN ARE CORRECT. THE SURVEY WAS COMPLETED ON THE 15TH DAY OF JULY, 1988.

Ronald L. Johns signature and name: R. L. JOHNS, B.C.L.S.

THE SEAL OF THE CITY OF PRINCE GEORGE WAS AFFIXED HERETO IN THE PRESENCE OF:

Signatures of Mayor and City Clerk.

APPROVED UNDER THE LAND TITLE ACT THIS 19 DAY OF July, 1989

Signature of Approving Officer, Ministry of Transportation and Highways.

APPROVED UNDER THE LAND TITLE ACT THIS 19th DAY OF July, 1989

Signature of Approving Officer, City of Prince George, Reapproved October 31, 1989.

THIS PLAN LIES WITHIN THE FRASER-FORT GEORGE REGIONAL DISTRICT.

R.L. JOHNS & ASSOCIATES LEGAL AND ENGINEERING SURVEYS P.O. BOX 824 PRINCE GEORGE - B.C. V2L 4V3