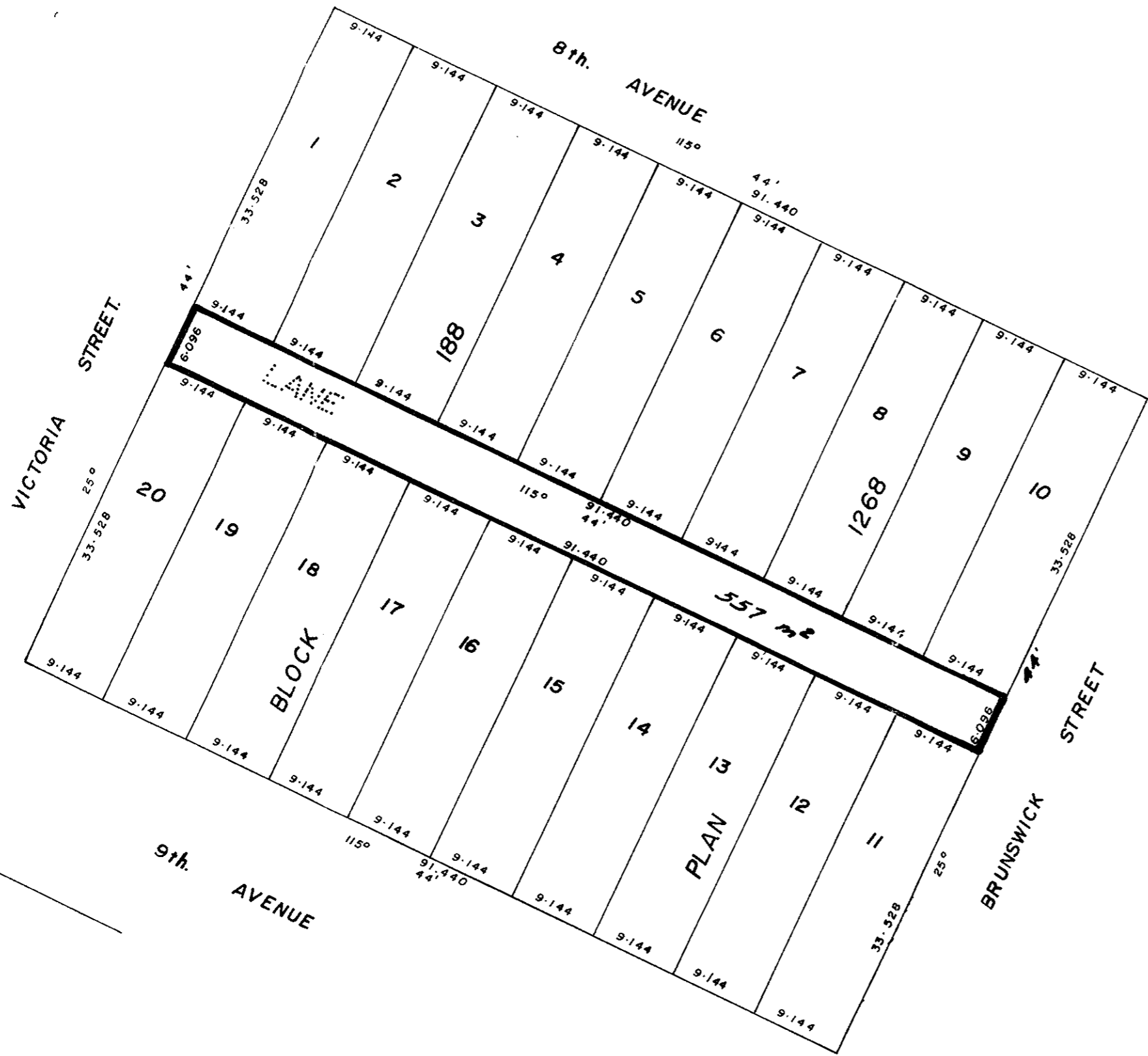


EXPLANATORY PLAN TO ACCOMPANY BY LAW 3649  
 CITY OF PRINCE GEORGE, CLOSING LANE ADJOINING  
 LOTS 1-20, BLOCK 188, PLAN 1268, D.L. 343  
 CARIBOO DISTRICT

SCALE, 1:500   
 ALL DISTANCES ARE IN METRES

PLAN 34071  
 DEPOSITED IN THE LAND TITLE OFFICE  
 at Prince George, B.C.  
 ON THE 17 DAY OF OCT 1989  
 \_\_\_\_\_  
 REGISTRAR



CERTIFIED CORRECT ACCORDING TO PLAN 1268,  
 THIS 28th DAY OF AUGUST, 1980

  
 V. BARTELL, B.C.L.S.

THIS PLAN LIES WITHIN THE FRASER FORT GEORGE  
 REGIONAL DISTRICT

MCWILLIAM-WHYTE-GOBLE & ASSOCIATES  
 B.C. LAND SURVEYORS  
 KAMLOOPS-PRINCE GEORGE-SALMON ARM-SMITHERS  
 FILE NO. 80164