

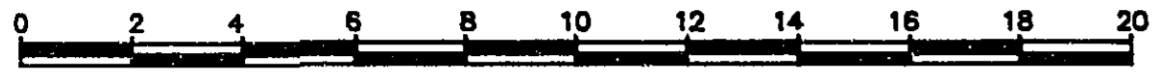
26.FF.226

PLAN OF STATUTORY RIGHT-OF-WAY
REQUIRED BY B C RAIL LTD. IN
LOT 2, PLAN 10024.

DISTRICT LOTS 777 AND 1430
CARIBOO DISTRICT - BRITISH COLUMBIA

PURSUANT TO CHAPTERS 34 AND 36, STATUTES OF 1912, AND
CHAPTER 354, REVISED STATUTES OF 1979.

SCALE 1 : 200 B.C.G.S. 93G.087



BEARINGS ARE ASTRONOMIC, DERIVED FROM
THE EAST BOUNDARY OF R / W PLAN 21049.

LEGEND

- OIP DENOTES AN OLD IRON PIN FOUND.
- IP DENOTES AN IRON PIN SET.

BOOK OF REFERENCE

DESCRIPTION	AREA REQUIRED
LOT 2, PLAN 10024, DISTRICT LOTS 777 & 1430	60.26 m ²

PLAN No. 34050

DEPOSITED IN THE LAND TITLE OFFICE
AT PRINCE GEORGE, B.C., THIS 5th
DAY OF October, 1989.

W. J. Handy
REGISTRAR
pu R.H.

D. L. 1430

3

PLAN 17961

PLAN 10024

LOT 1

EAST BOUNDARY OF D. L. 1430
WEST BOUNDARY OF D. L. 777

R / W PLAN 21101

OIP

OIP

OIP

OIP

OIP

OIP

OIP

OIP

OIP

OIP

OIP

OIP

OIP

OIP

OIP

OIP

OIP

OIP

OIP

OIP

OIP

OIP

OIP

OIP

OIP

OIP

OIP

OIP

OIP

OIP

OIP

OIP

OIP

OIP

OIP

OIP

OIP

OIP

OIP

OIP

OIP

OIP

OIP

OIP

OIP

OIP

OIP

OIP

OIP

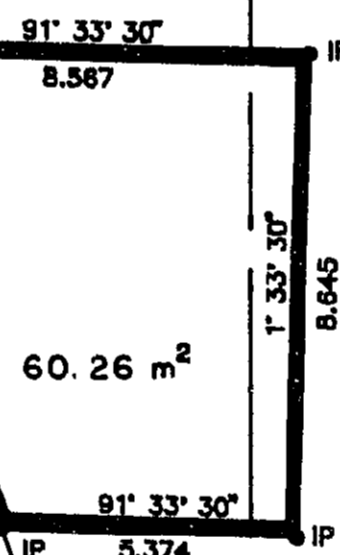
OIP

OIP

OIP

OIP

OIP



D. L. 777

2

PLAN 10024



B C RAIL LTD.

M.C. Jarvis
AUTHORIZED SIGNATORY

R.W. Young
AUTHORIZED SIGNATORY

[Signature]
CHIEF ENGINEER

I, RONALD L. JOHNS, A BRITISH COLUMBIA LAND SURVEYOR, OF PRINCE GEORGE, IN BRITISH COLUMBIA, CERTIFY THAT I WAS PRESENT AT AND PERSONALLY SUPERINTENDED THE SURVEY REPRESENTED BY THIS PLAN AND THAT THE SURVEY AND PLAN ARE CORRECT. THE SURVEY WAS COMPLETED ON THE 21ST DAY OF APRIL, 1989.

Ronald L. Johns
R.L. JOHNS, B.C.L.S.

SANCTIONED:

[Signature]
MINISTER OF TRANSPORTATION AND HIGHWAYS.

[Signature]
BRIEF INSPECTING ENGINEER, PURSUANT TO THE RAILWAY ACT OF BRITISH COLUMBIA.

LEASE AREA
PLAN 21049
PARCEL Y, PLAN 649

THIS PLAN LIES WITHIN THE FRASER-FORT GEORGE REGIONAL DISTRICT.

D. L. 777

R.L. JOHNS & ASSOCIATES
LEGAL AND ENGINEERING SURVEYS
P.O. BOX 824
PRINCE GEORGE, B.C. V2L 4V3
(604) 562-5759