

# 26.FF.226

REFERENCE PLAN OF EASEMENT  
 IN LOT 1, PLAN 34009,  
 DISTRICT LOT 4039, CARIBOO DISTRICT.

B.C.L.S. 936.097

Scale: 1:500 (All distances are in metres.)

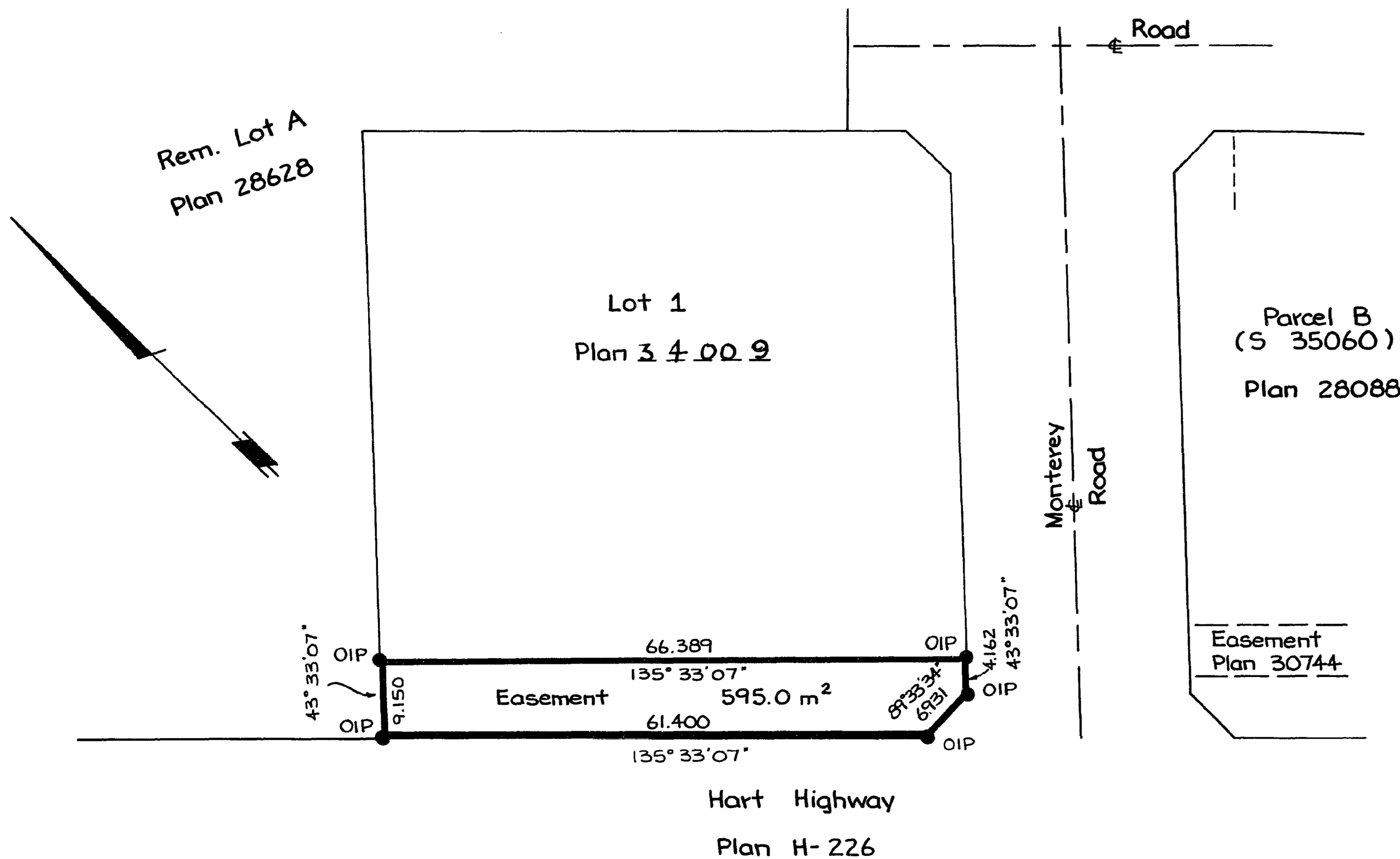


Bearings are astronomic, derived from  
 Plan 28088.

- IP . . . . . Standard Iron Post.
- . . . . . Denotes old.

PLAN NO. 34010  
 Deposited in the Land Title Office at  
 Prince George this 14 day of Sept,  
 1989.

--- W.G. Bandy ---  
 Registrar



I, V. Bartell, a British Columbia Land  
 Surveyor, of Prince George in British  
 Columbia, certify that I was present at  
 and personally superintended the survey  
 represented by this plan, and that the  
 survey and plan are correct. The survey  
 was completed on the 4 day of August, 1989.

--- Victor Bartell ---  
 V. Bartell, B.C.L.S.

Book of Reference	
Description	Area
Lot 1, Plan _____, D.L. 4039	595.0 m <sup>2</sup>

McWilliam, Whyte, Goble & Associates, B.C. Land Surveyors, Prince George (604) 562-1196 Kamloops - Smithers - Williams Lake	
REF. NO. 89438-A	(D.L. 4039)

This plan lies within the Fraser  
 Fort George Regional District.