

26.FF.226

REFERENCE PLAN OF EASEMENT IN LOT A, PLAN 19765, DISTRICT LOT 936, CARIBOO DISTRICT.

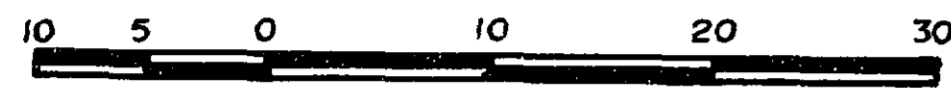
PLAN NO. 33929

Deposited in the Land Title Office at Prince
George this 9 day of Aug 1989.

W. A. Sandy
Registrar

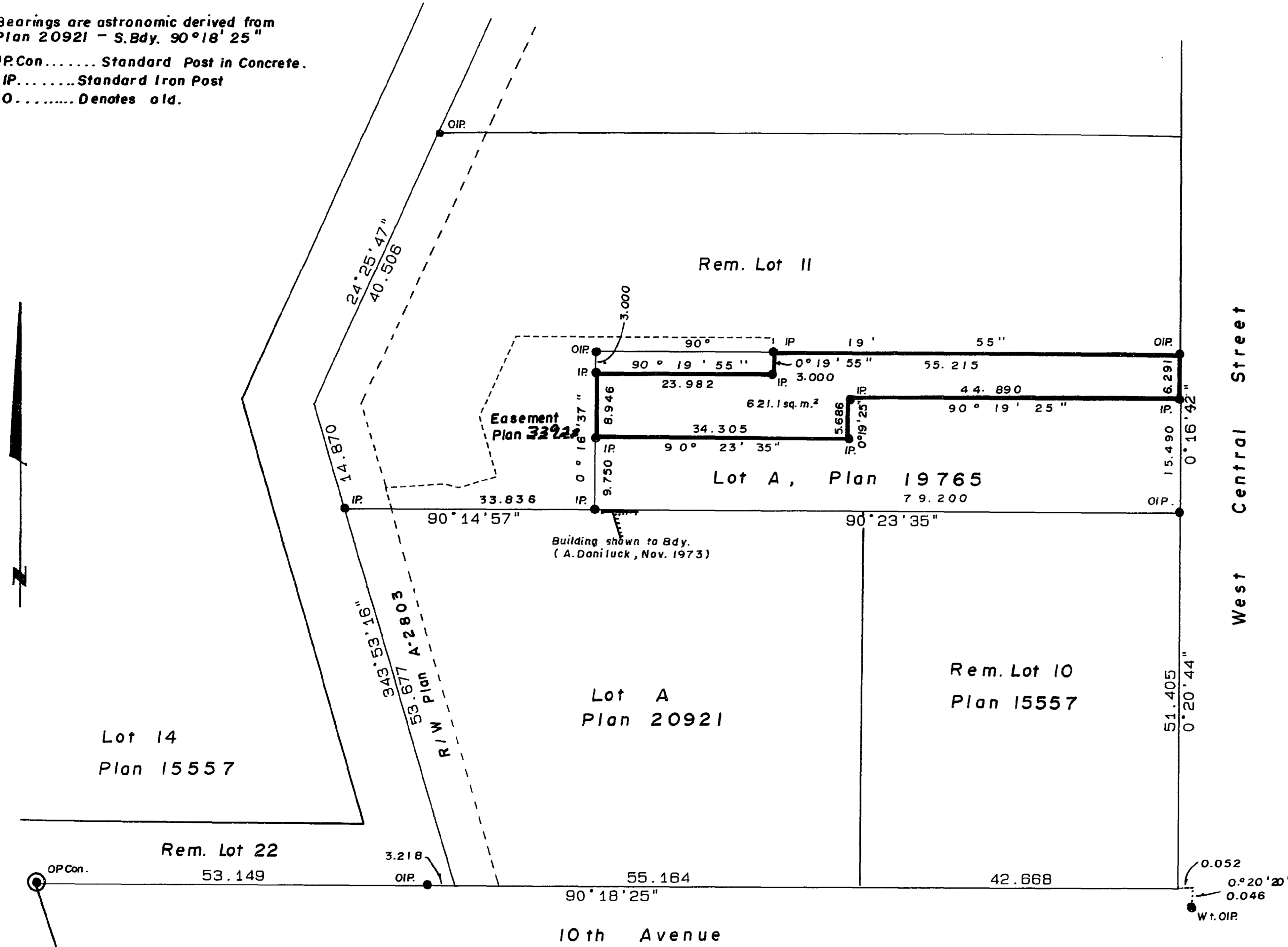
B.C.G.S. 936.097

SCALE : 1:500 (All distances are in metres.)



Bearings are astronomic derived from
Plan 20921 - S.Bdy. 90°18'25"

- P.Con..... Standard Post in Concrete.
- IP..... Standard Iron Post
- Denotes old.



I, G. Kilbride, a British Columbia Land Surveyor, of
Prince George in British Columbia certify that I was
present at and personally superintended the survey
represented by this plan and that the survey and
plan are correct. The survey was completed on
the 26th day of June, 1989.

Gordon Kilbride
G. Kilbride, B.C.L.S.

Book of Reference	
Description	Area
Lot A, Plan 19765 ²	621.1m

This plan lies within the Fraser Fort
George Regional District.

Mc William, Whyte, Goble & Associates,
B.C. Land Surveyors,
Prince George (604) 562-1196
Kamloops-Smithers-Williams Lake

REF. NO. 89258-2 QR 71