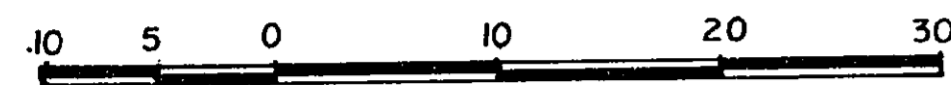


26.FF.226

REFERENCE PLAN OF EASEMENT ON REMAINDER OF LOT II, PLAN 15557, DISTRICT LOT 936, CARIBOO DISTRICT.

B.C.G.S. 936.097

SCALE : 1 : 500 (All distances are in metres)



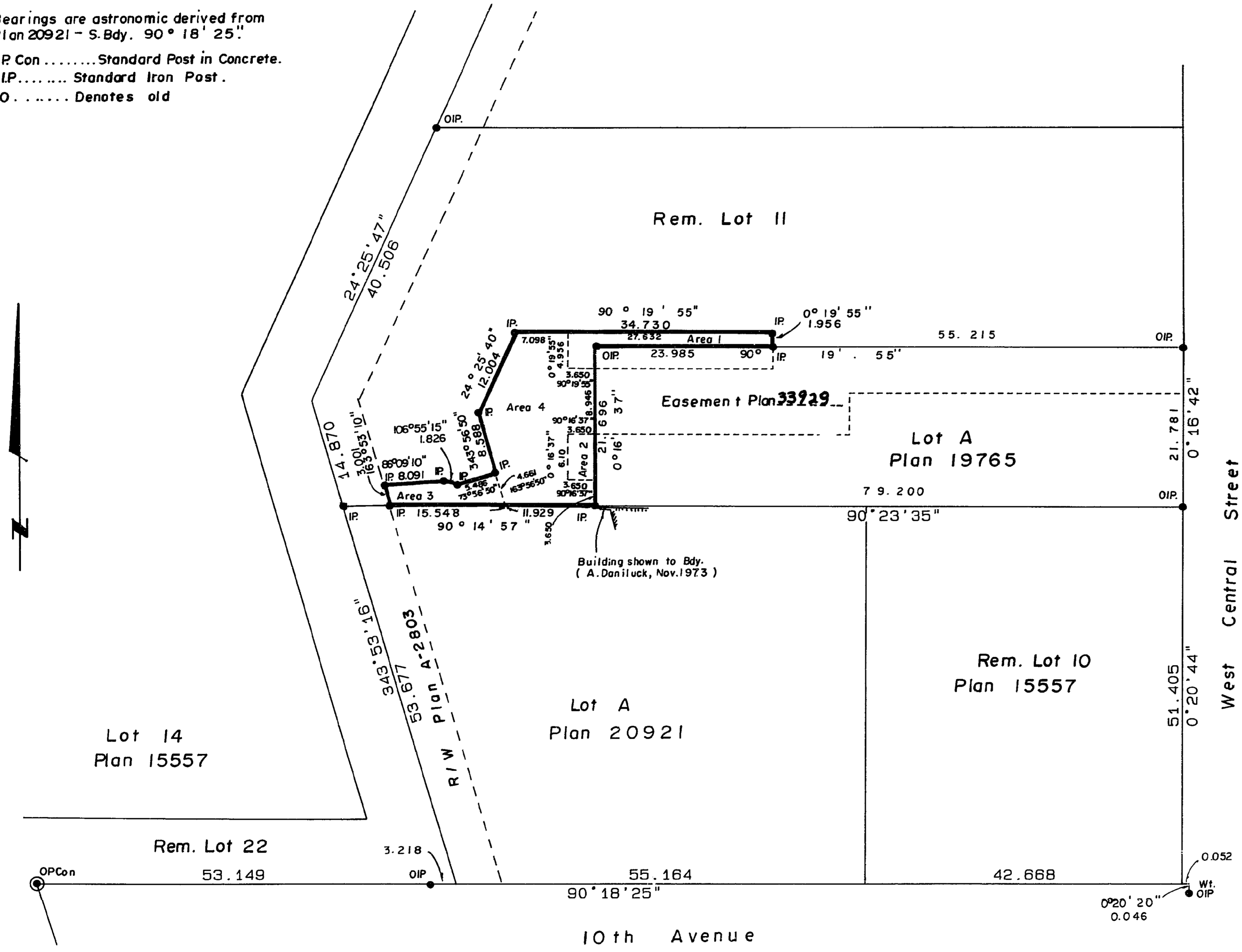
Bearings are astronomic derived from
Plan 20921 - S. Bdy. 90° 18' 25"

- P Con Standard Post in Concrete.
- IP Standard Iron Post.
- Denotes old

PLAN NO. 33928

Deposited in the Land Title Office at Prince George
this 9 day of Aug 1989.

W. J. Sandy
Registrar



I, G. Kilbride, a British Columbia Land Surveyor, of
Prince George in British Columbia, certify that I was
present at and personally superintended the survey
represented by this plan and that the survey and
plan are correct. The survey was completed on
the 26 day of June, 1989.

Gordon Kilbride
G. Kilbride, B.C.L.S.

Book of Reference	
Description	Area
Area 1	64.99 sq.m.
Area 2	22.27 sq.m.
Area 3	52.37 sq.m.
Area 4	279.5 sq.m.
Total	419.1 sq.m.

This plan lies within the Fraser Fort George
Regional District.

Mc William, Whyte, Goble & Associates,
B.C. Land Surveyors,
Prince George (604) 562-1196
Kamloops - Smithers - Williams Lake
REF. NO. 89258-1 QR 71