

26.FF.226

REFERENCE PLAN OF STATUTORY RIGHT-OF-WAY
OVER PART OF LOT 1, PLAN 5565, D.L.483,
AND PART OF D.L.955, CARIBOO DISTRICT.

B.C.G.S. 936.097

SCALE : 1:1250 (Distances are in metres)



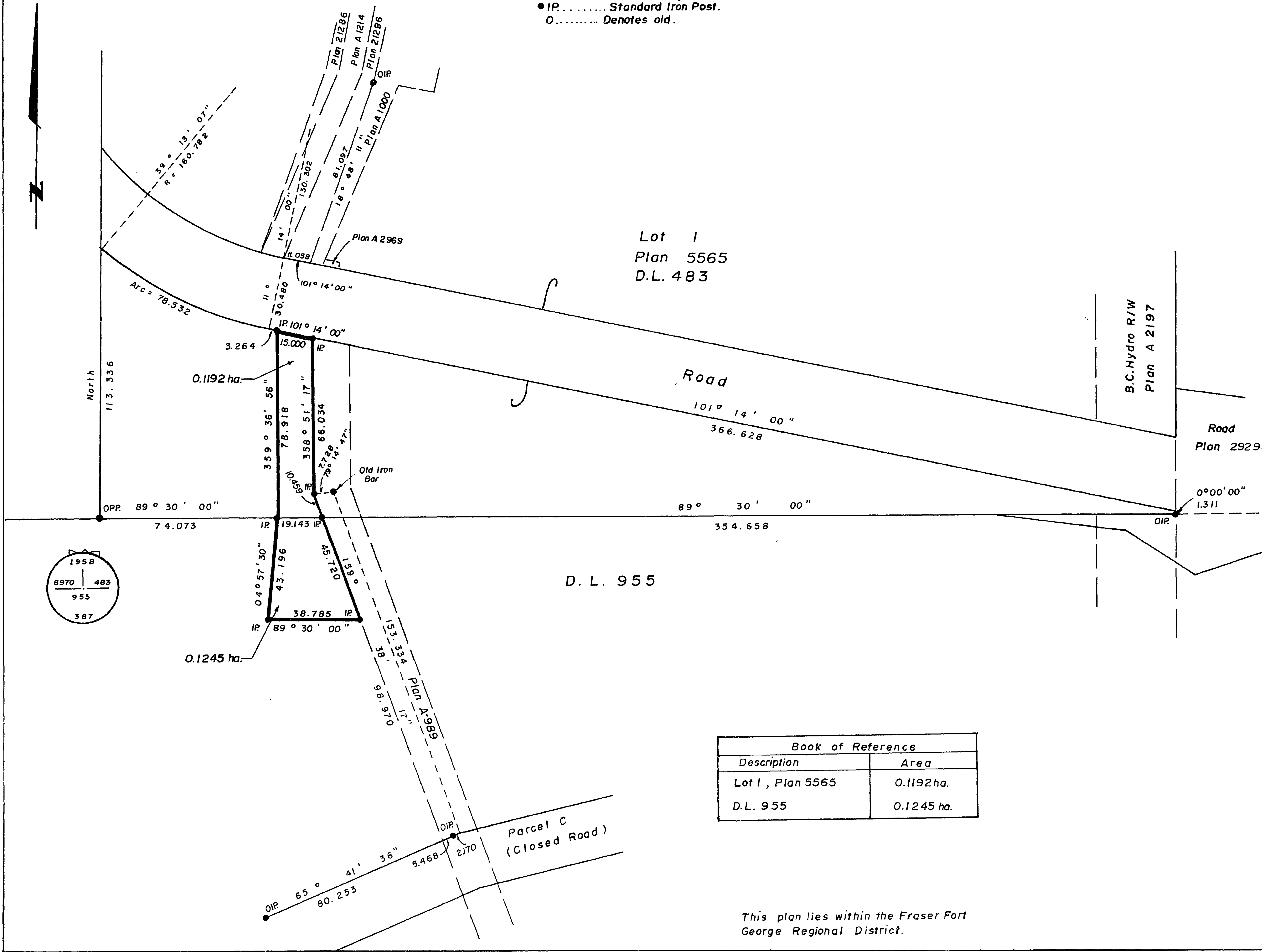
Bearings are astronomic derived from Plan 5565 -
South boundary = 89°30'00"

- P.P. Standard Pipe Post.
- IP. Standard Iron Post.
- Denotes old.

PLAN NO. 33878

Deposited in the Land Title Office at Prince
George this 30 day of July 1989.

W. Grandy
Registrar.



I, G. Kilbride, a British Columbia Land Surveyor, of
Prince George in British Columbia, certify that I
was present at and personally supervised the
survey represented by this plan, and that the survey
and plan are correct. The survey was completed on
the 12th day of December, 1988.

Book of Reference	
Description	Area
Lot 1, Plan 5565	0.1192 ha.
D.L. 955	0.1245 ha.

Gordon Killik
G. Kilbride, B.C.L.S.

This plan lies within the Fraser Fort
George Regional District.

McWilliam, Whyte, Goble & Associates,
B.C. Land Surveyors
Prince George (604) 562-1196
Kamloops - Smithers - Williams Lake
REF. NO. 88532 QU 40