

JR

33845

PLAN NO. _____

Deposited in the Land Title Office at
Prince George this 7 day of July
1989.

----- *W. J. L.* -----

REFERENCE PLAN OF
ACCESS EASEMENT OVER LOT 1,
PLAN 25850, DISTRICT LOT 4041,
CARIBOO DISTRICT.

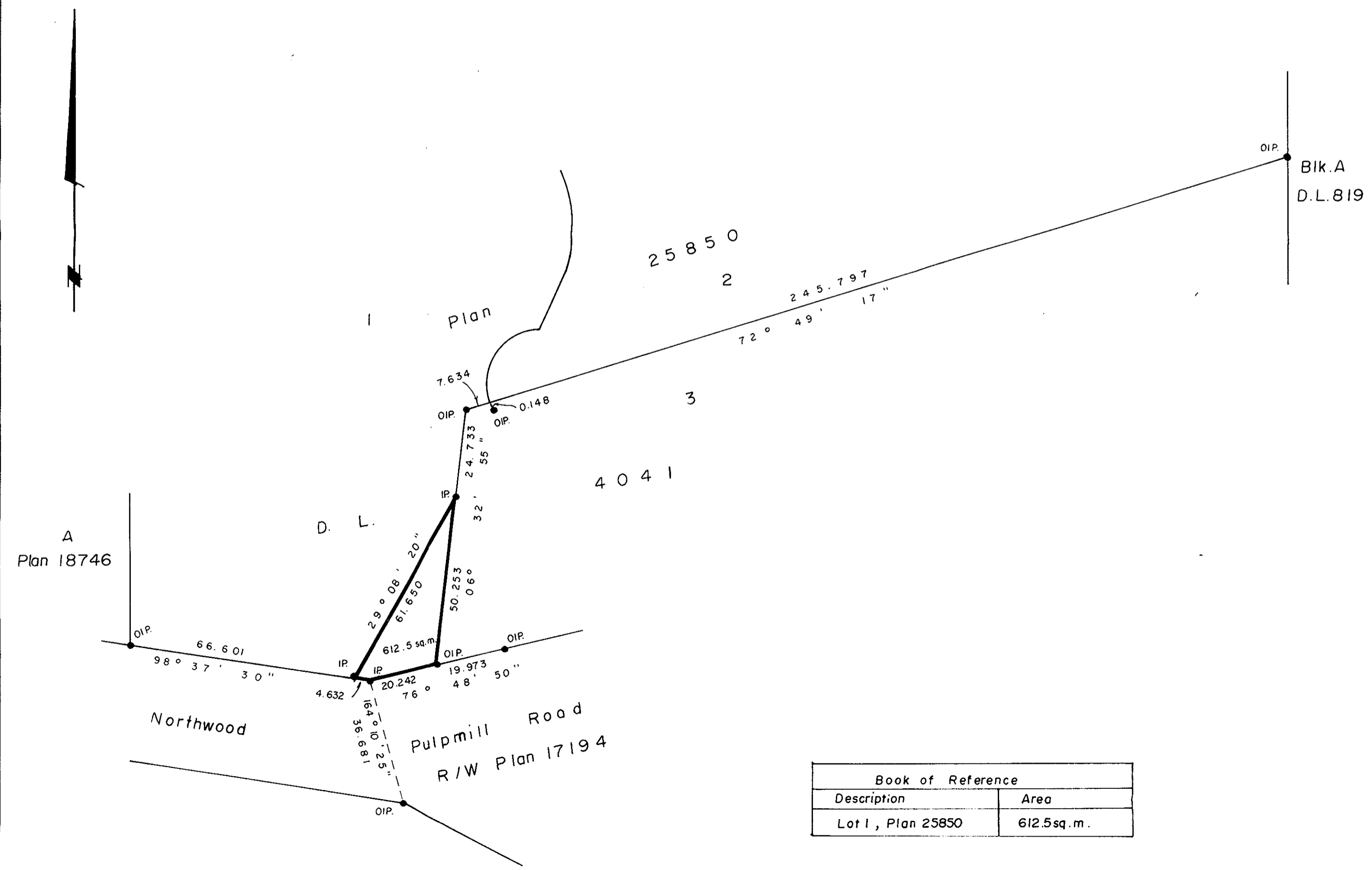
B.C.G.S. 936.097

Scale : 1 : 1000 (All distances are in metres)



Bearings are astronomic derived from Plan 25850 =
76° 48' 50."

- IP..... Standard Iron Post.
- Denotes "old"



I, G. Kilbride, a British Columbia Land Surveyor, of
Prince George in British Columbia, certify that I was
present at and personally superintended the survey
represented by this plan, and that the survey and plan
are correct. The survey was completed on the 16th
day of June, 1989.

Gordon Kilbride
G. Kilbride, B.C.L.S.

Book of Reference	
Description	Area
Lot 1, Plan 25850	612.5sq.m.

This plan lies within the Fraser Fort George
Regional District.

McWilliam, Whyte, Goble & Associates
B.C. Land Surveyors,
Prince George - (604) 562-1196
Kamloops - Smithers - Williams Lake
REF. NO. 89272 QO 78