

REFERENCE PLAN OF CONSOLIDATION OF LOT A, PLAN 5802, D.L. 2611 and 2508, AND CLOSED ROAD, PLAN 33838, D.L. 2508, CARIBOO DISTRICT.

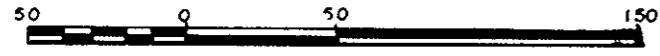
PLAN NO. 33840

Deposited in the Land Title Office at Prince George this 30 day of June 1989.

WJG Registrar

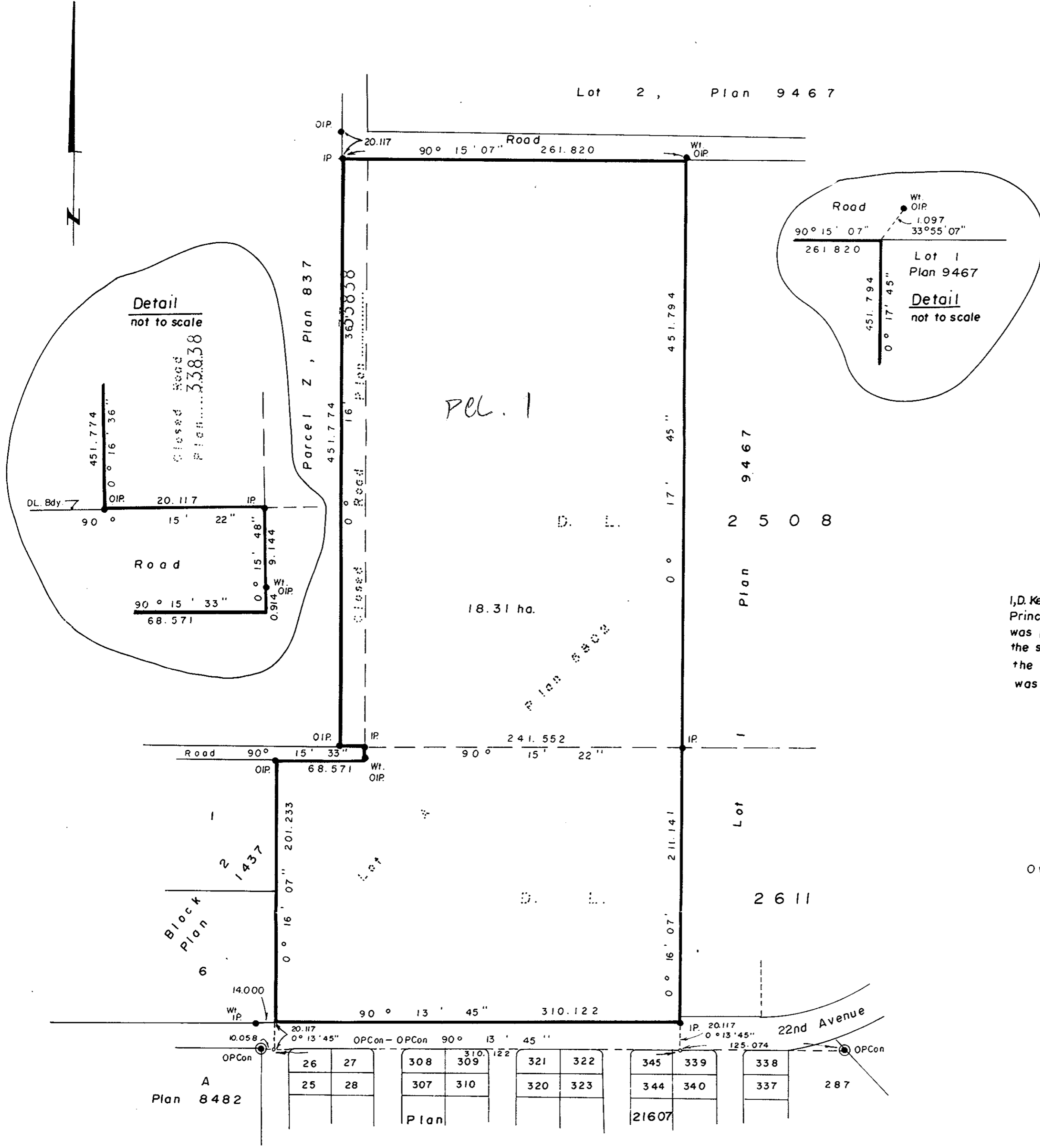
B.C.G.S. 93 G. 097.

SCALE: 1: 2500 (All distances are in metres.)



Bearings are astronomic derived from Plan 21607

- IP..... Standard Iron Post.
- ⊙ PCon..... Standard Post in Concrete.
- Denotes old
- Wt..... Denotes witness.



I, D. Keown, a British Columbia Land Surveyor, of Prince George in British Columbia, certify that I was present at and personally superintended the survey represented by this plan, and that the survey and plan are correct. The survey was completed on the 17th day of May 1989.

D. Keown, B.C.L.S.

Owner: City of Prince George

The seal was affixed hereto in the presence of:

Mayor [Signature]

Clerk [Signature]

26	27	308	309	321	322	345	339	338
25	28	307	310	320	323	344	340	337
Plan		Plan		Plan		Plan		287

This plan lies within the Fraser Fort George Regional District.

McWilliam, Whyte, Goble & Associates,
B.C. Land Surveyors,
Prince George (604) 562-1196
Kamloops - Smithers - Williams Lake,
REF. NO. 88558.