

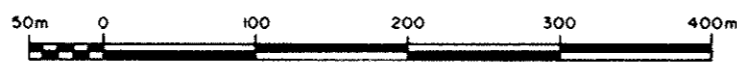
EXPLANATORY PLAN TO ACCOMPANY BY-LAW 4455  
 OF THE CITY OF PRINCE GEORGE  
 CLOSING PART OF THE ROADS DEDICATED BY  
 PLAN 884 AND PLAN 24515, OF DISTRICT LOTS  
 745 AND 747, CARIBOO DISTRICT

PLAN 33713

Deposited in the Land Title Office, at  
 Prince George, B.C., this 18 day of  
 May 1989.

B.C.G.S. 93G-087

SCALE: 1:5000



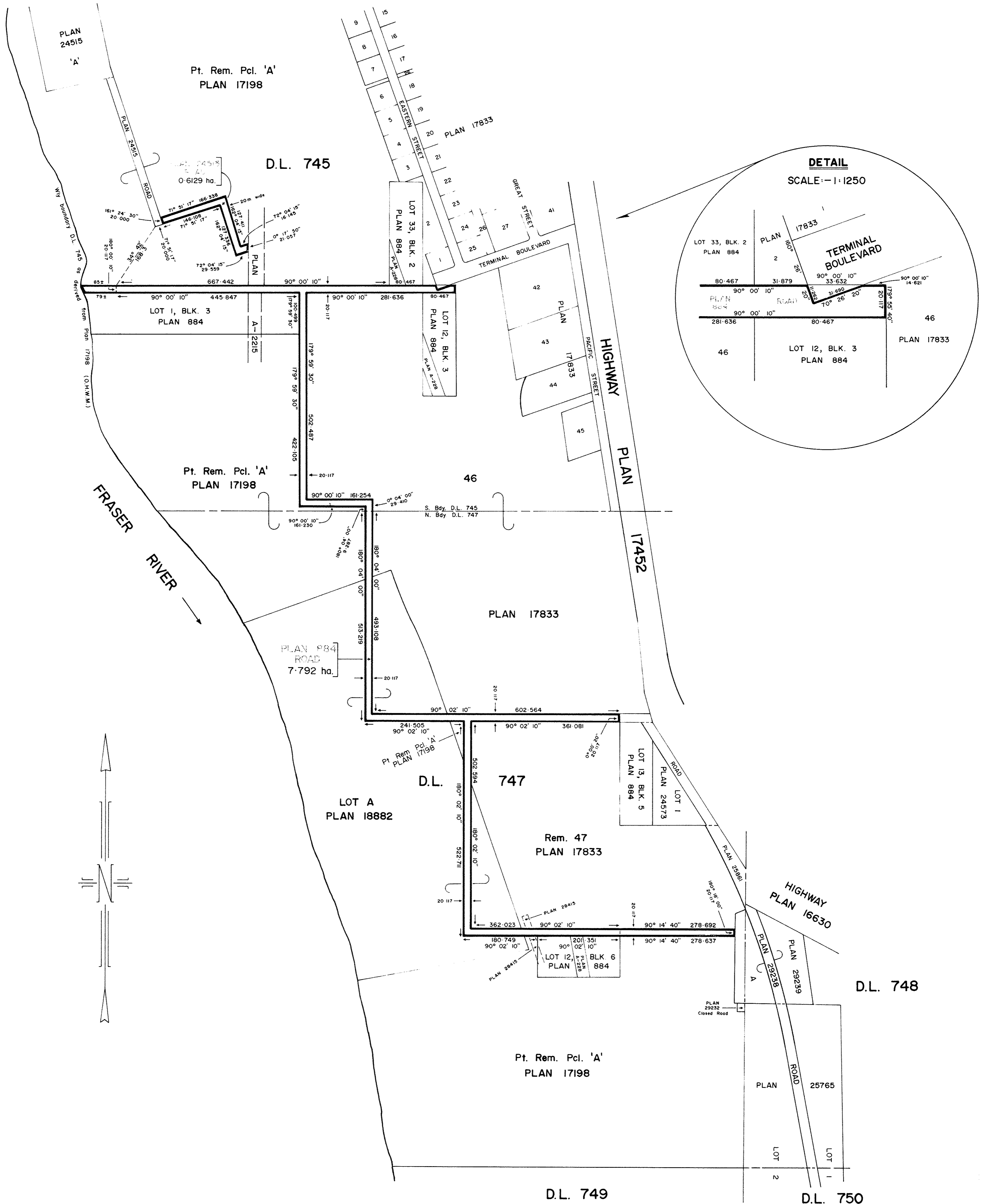
LEGEND

Bearings are Astronomic, and were derived from Plan 17198.  
 ALL DISTANCES ARE IN METRES.

W.G.G. Registrar

This Plan lies within the  
 Fraser - Fort George Regional District.

BOOK OF REFERENCE	DESCRIPTION	AREA
Roads shown on Plan 884		7.792 ha.
Roads shown on Plan 24515		0.6129 ha.



Certified correct according to Prince George  
 Land Title Office Plans.

*J. Blalmon*  
 B.C.L.S.

Date: Sept. 21, 1989