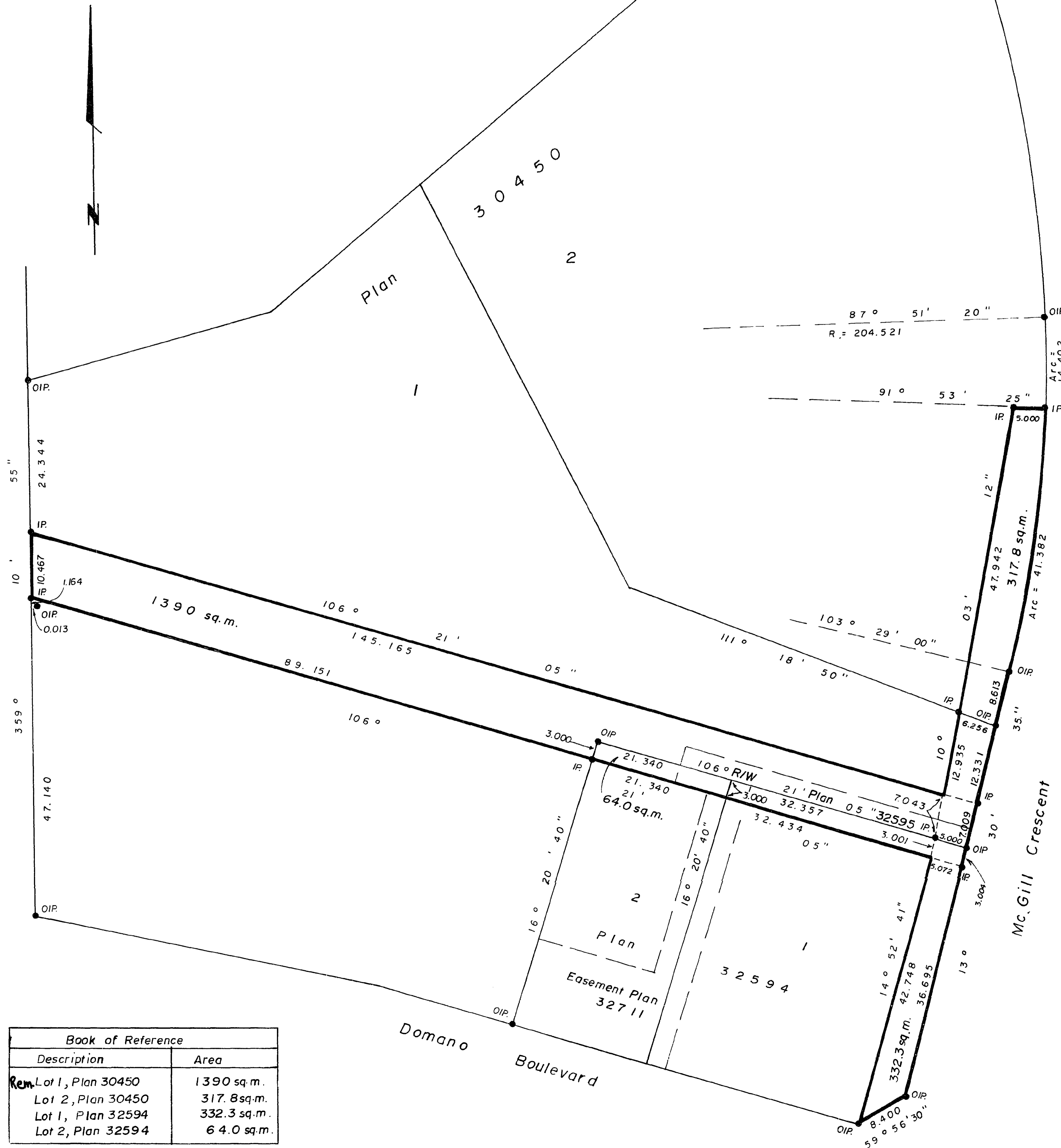


# 26-FF-226

PLAN NO. 33667  
 Deposited in the Land Title Office at Prince  
 George this 28 day of APRIL 1989.

--- W.G. GANDY ---  
 Registrar PER: a



REFERENCE PLAN OF STATUTORY  
 RIGHT-OF-WAY FOR UTILITY AND  
 MUNICIPAL PURPOSES OVER LOTS 1  
 AND 2, PLAN 30450, AND LOTS 1  
 AND 2, PLAN 32594, D.L. 753,  
 CARIBOO DISTRICT.

B.C.G.S. 936.097

SCALE: 1: 500 ( Distances are in metres)



Bearings are astronomic derived from Plan 30450 =  
 McGill Crescent = 13° 30' 35".

- IP.....Standard Iron Post.
- .....Denotes old.

I G. Kilbride a British Columbia Land Surveyor of  
 Prince George in British Columbia certify that I was  
 present at and personally superintended the survey  
 represented by this plan and that the survey and plan  
 are correct. The survey was completed on the  
 16th day of December, 1988.

Gordon Kilbride  
 G. Kilbride, B.C.L.S.

This plan lies within the Fraser Fort George Regional  
 District.

Book of Reference	
Description	Area
Rem. Lot 1, Plan 30450	1390 sq.m.
Lot 2, Plan 30450	317.8 sq.m.
Lot 1, Plan 32594	332.3 sq.m.
Lot 2, Plan 32594	64.0 sq.m.

McWilliam, Whyte, Goble & Associates,  
 B.C. Land Surveyors,  
 Prince George (604) 562-1196  
 Kamloops - Smithers - Williams Lake  
 REF. NO. 88435 R617