

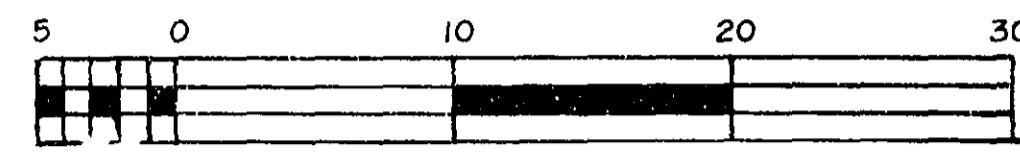
REFERENCE PLAN OF STATUTORY RIGHT OF WAY THROUGH PART OF LOT 1 PLAN 33660 AND PART OF REMAINDER OF LOT A PLAN 19756 D.L. 777 CARIBOO DISTRICT

26-FF-226

PLAN 33663

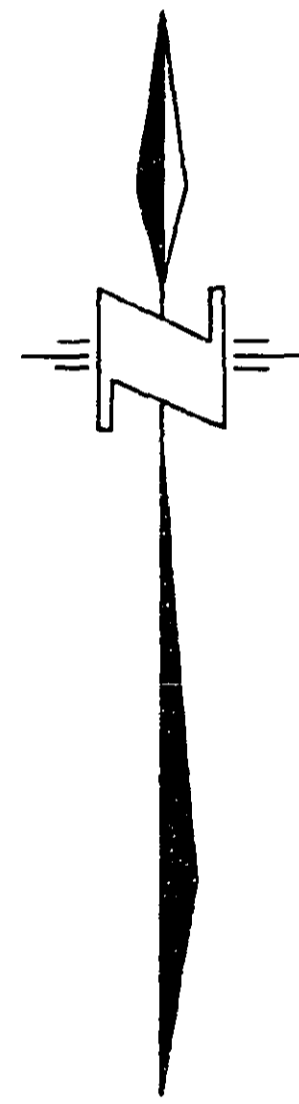
DEPOSITED IN THE LAND TITLE OFFICE
PRINCE GEORGE, B.C.
THIS 26 DAY OF April 1989

"W. J. Handy" / 26
REGISTRAR



SCALE 1:500

B.C.G.S. 93G.097



LEGEND

BEARINGS ARE ASTRONOMIC DERIVED FROM
PLAN 19756 (0° 00' 10")

- OIP DENOTES OLD IRON POST FOUND
- IP DENOTES IRON POST SET

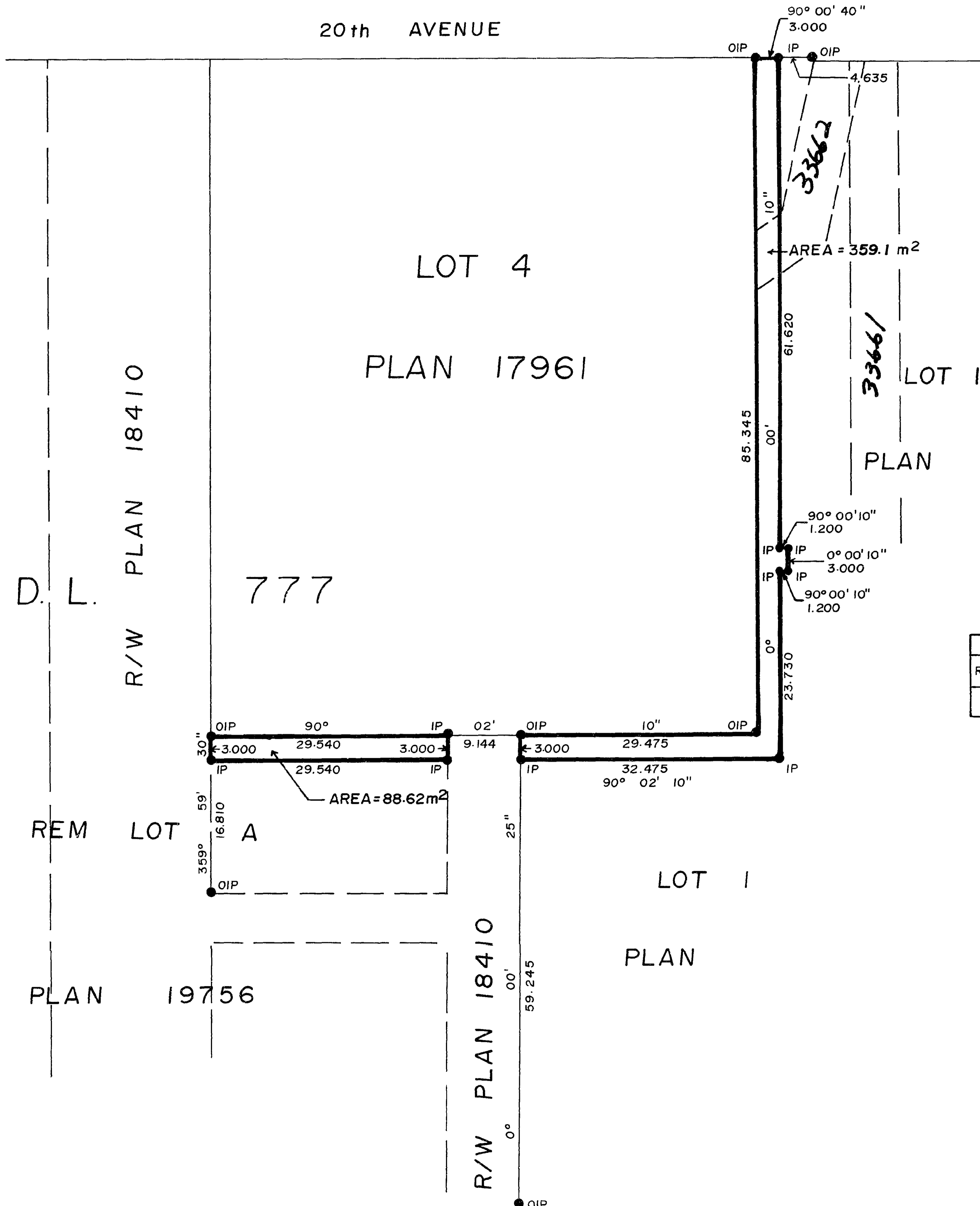
ALL DISTANCES ARE IN METRES AND DECIMALS
THEREOF.

I, Harry E. Hickman A BRITISH COLUMBIA LAND SURVEYOR
OF PRINCE GEORGE IN BRITISH COLUMBIA, CERTIFY THAT
I WAS PRESENT AT AND PERSONALLY SUPERINTENDED
THE SURVEY REPRESENTED BY THIS PLAN AND THAT
THE SURVEY AND PLAN ARE CORRECT. THE SURVEY
WAS COMPLETED ON March 3rd, 1989.

H. E. Hickman B.C.L.S.

APPROVED UNDER THE LAND TITLE ACT.
THIS 17 DAY OF April 1989

N. D. Anderson
APPROVING OFFICER FOR CITY OF PRINCE GEORGE



BOOK OF REFERENCE

DESCRIPTION	AREA
REM LOT A, D.L. 777, PL 19756	88.62 m²
LOT 1, D.L. 777, PL	359.1 m²

THIS PLAN LIES WITHIN THE FRASER-FORT GEORGE REGIONAL DISTRICT

McELHANNEY ASSOCIATES
PROFESSIONAL LAND SURVEYORS
1892 3rd AVENUE
PRINCE GEORGE, B.C. V2M 1G4
FILE 412-0501B

B.C. Hydro FILE: 805-1501.0 (13)-1

805F-57-C3 Private