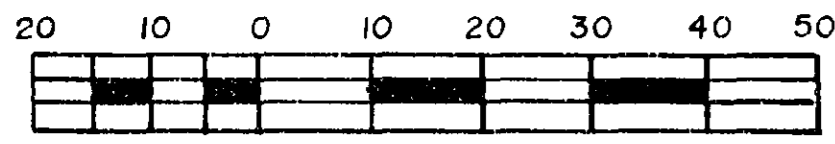


26-FF-226

REFERENCE PLAN OF STATUTORY RIGHT OF WAY THROUGH PART OF LOT I, D.L. 777, CARIBOO DISTRICT, PLAN 33660

PLAN 33661

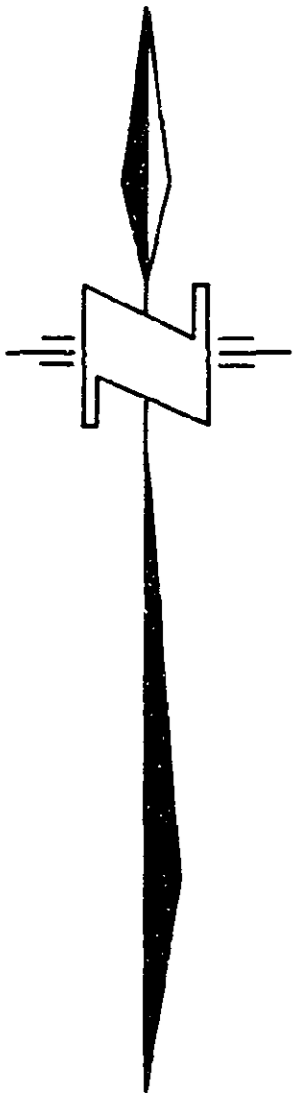


SCALE 1:1250

B.C.G.S. 93G.097

DEPOSITED IN THE LAND TITLE OFFICE
PRINCE GEORGE, B.C.
THIS 26 DAY OF April 1989

W. B. Sandy
REGISTRAR



LEGEND

BEARINGS ARE ASTRONOMIC DERIVED FROM PLAN 19756 (126° 59' 30")

- OIP DENOTES OLD IRON POST FOUND
- IP DENOTES IRON POST SET

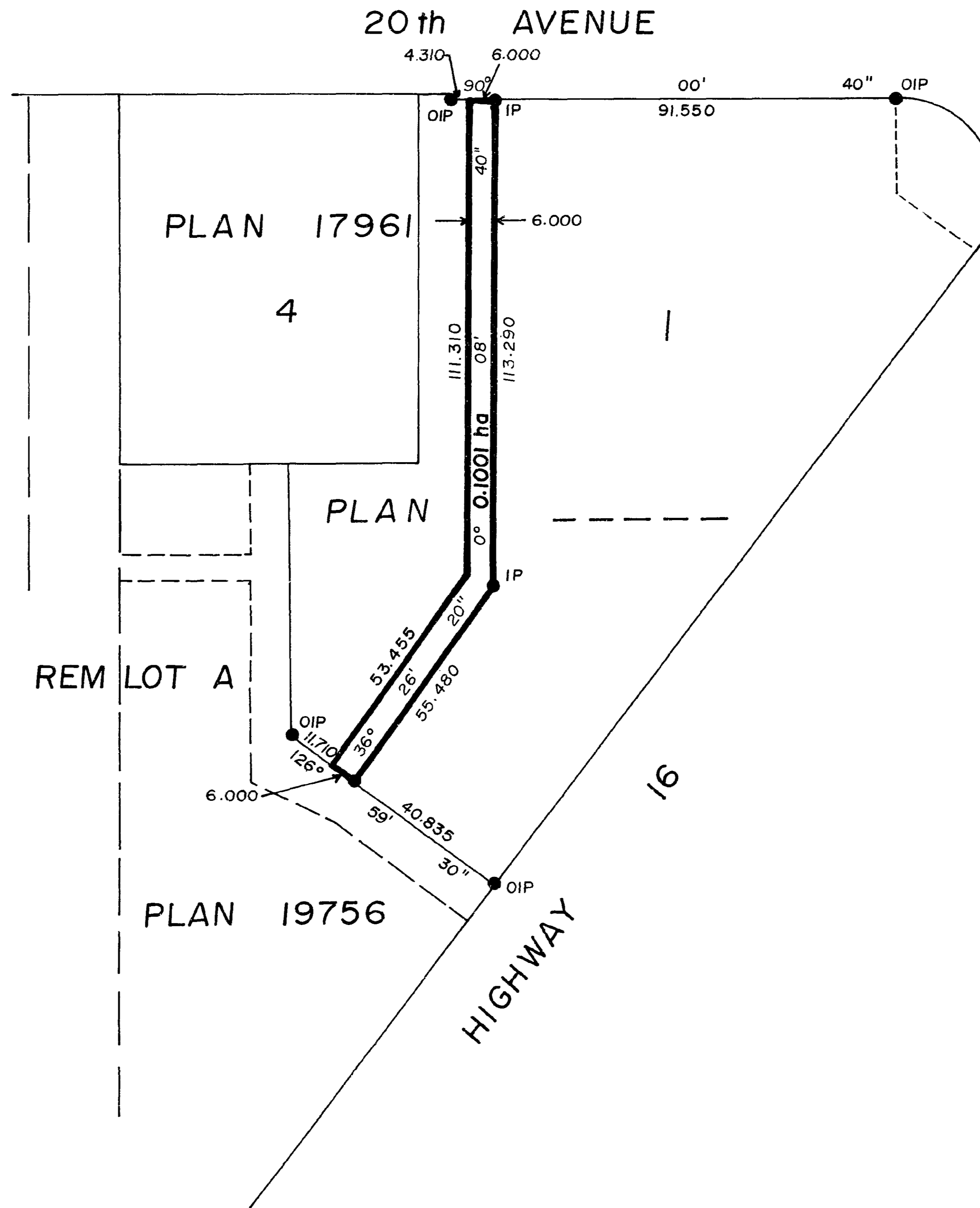
ALL DISTANCES ARE IN METRES AND DECIMALS THEREOF.

I, Harry E. Hickman A BRITISH COLUMBIA LAND SURVEYOR OF PRINCE GEORGE IN BRITISH COLUMBIA, CERTIFY THAT I WAS PRESENT AT AND PERSONALLY SUPERINTENDED THE SURVEY REPRESENTED BY THIS PLAN AND THAT THE SURVEY AND PLAN ARE CORRECT. THE SURVEY WAS COMPLETED ON March 3rd, 1989.

Harry E. Hickman
B.C.L.S.

APPROVED UNDER THE LAND TITLE ACT.
THIS 10th DAY OF April 1989

[Signature]
APPROVING OFFICER FOR CITY OF PRINCE GEORGE



BOOK OF REFERENCE

DESCRIPTION	AREA
LOT I D.L. 777 C.D. PLAN	0.1001 ha

THIS PLAN LIES WITHIN THE FRASER-FORT GEORGE REGIONAL DISTRICT

McELHANNEY ASSOCIATES
PROFESSIONAL LAND SURVEYORS
1892 3rd AVENUE
PRINCE GEORGE, B.C. V2M 1G4
FILE 412-05017