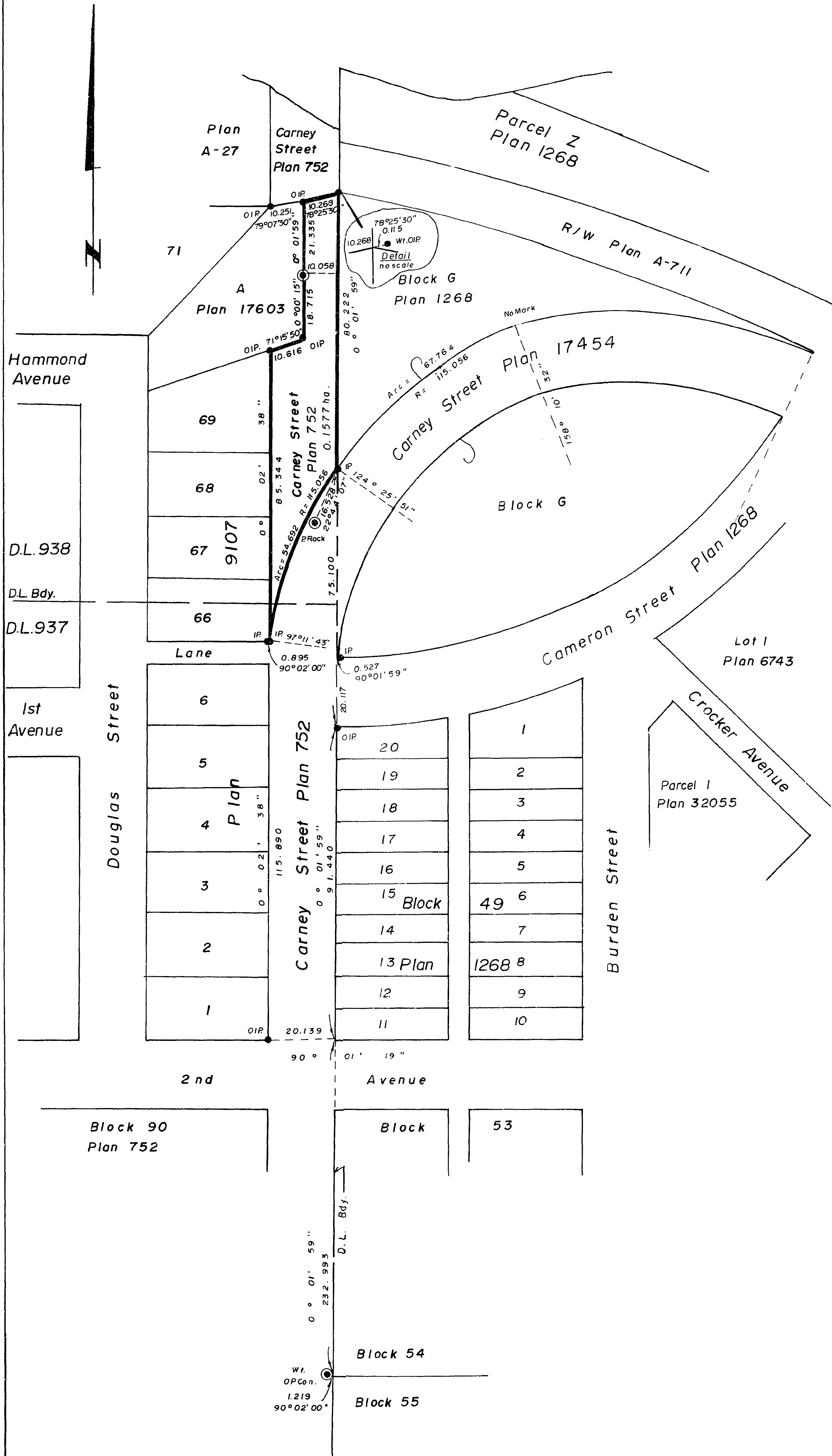


26-FF.226

PLAN NO. 33402

Deposited in the Land Title Office at
Prince George this 1st day of Dec
1988.

W.G. Gandy
Registrar per R



REFERENCE PLAN
TO ACCOMPANY BYLAW NO. 5179,
CITY OF PRINCE GEORGE
STOP UP AND CLOSE TO TRAFFIC
PART OF CARNEY STREET AS
SHOWN ON PLAN 752,
DISTRICT LOTS 937 and 938,
CARIBOO DISTRICT.

Scale: 1:1000 (ALL DISTANCES ARE IN METRES)



Bearings are astronomic derived from observations on Polaris and referred to N.W. Corner of Blk. 49, Plan 1268.

- IP..... Standard Iron Post.
- ⊙ P.Con..... Standard Post in Concrete.
- O..... Denotes "old"

I, V. Bartell, a British Columbia Land Surveyor of Prince George in British Columbia certify that I was present at and personally superintended the survey represented by this plan and that the survey and plan are correct. The survey was completed on the 10 day of May 1988

V. Bartell
V. Bartell, B.C.L.S.

This plan lies within the Fraser Fort George Regional District.

McWilliam, Whyte, Goble, & Associates.
B.C. Land Surveyors,
Prince George - (604) 562-1196
Kamloops - Smithers - Williams Lake
REF. NO. 86039 - 1