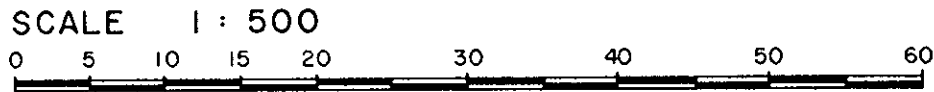


REFERENCE PLAN OF CONSOLIDATION OF
 LOTS 13,14,15,16, & ASSIGNED LOT A (54543M)
 BLOCK 60, PLAN 752, DISTRICT LOT 937,
 CARIBOO DISTRICT - BRITISH COLUMBIA
 B.C.G.S. 936.097

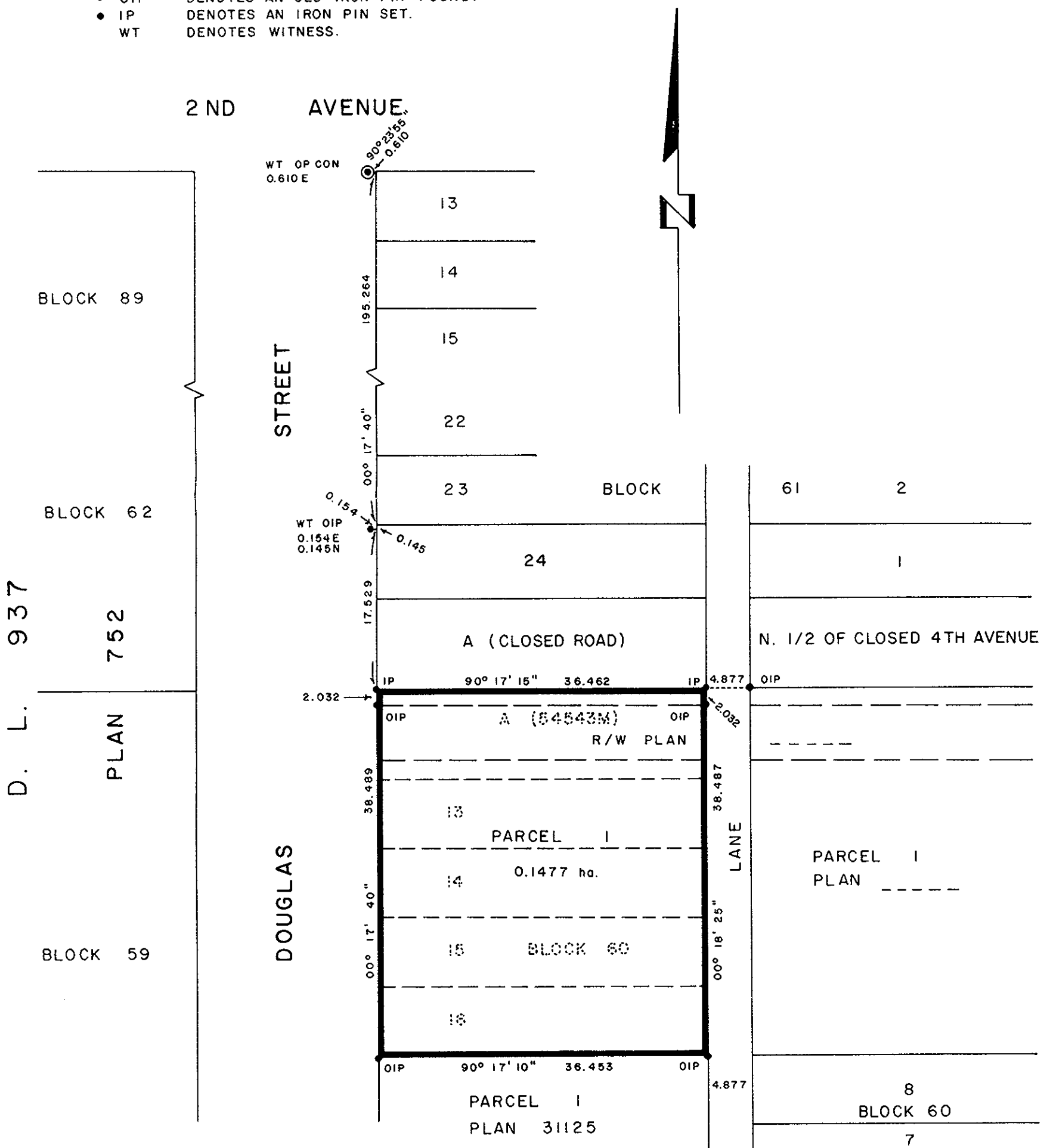
PLOTTED *MM*
 PLAN N^o 33304
 DEPOSITED IN THE LAND TITLE OFFICE
 AT PRINCE GEORGE, B.C., THIS 20
 DAY OF Oct, 1988
 REGISTRAR W/S



BEARINGS ARE ASTRONOMIC, DERIVED FROM THE NORTH
 BOUNDARY OF PARCEL 1, PLAN 31125.

LEGEND

- ⊙ OP CON DENOTES AN OLD CONCRETE MONUMENT FOUND
- OIP DENOTES AN OLD IRON PIN FOUND.
- IP DENOTES AN IRON PIN SET.
- WT DENOTES WITNESS.



I, RONALD L. JOHNS, A BRITISH COLUMBIA LAND SURVEYOR, OF PRINCE GEORGE, IN BRITISH COLUMBIA, CERTIFY THAT I WAS PRESENT AT AND PERSONALLY SUPERINTENDED THE SURVEY REPRESENTED BY THIS PLAN AND THAT THE SURVEY AND PLAN ARE CORRECT. THE SURVEY WAS COMPLETED ON THE 14TH DAY OF JUNE, 1988.

R. L. Johns
 R. L. JOHNS, B.C. L.S.

THIS PLAN LIES WITHIN THE FRASER-FORT GEORGE REGIONAL DISTRICT.

R. L. JOHNS & ASSOCIATES
 LEGAL AND ENGINEERING SURVEYS
 P.O. BOX 824
 PRINCE GEORGE - B.C.
 V2L 4V3