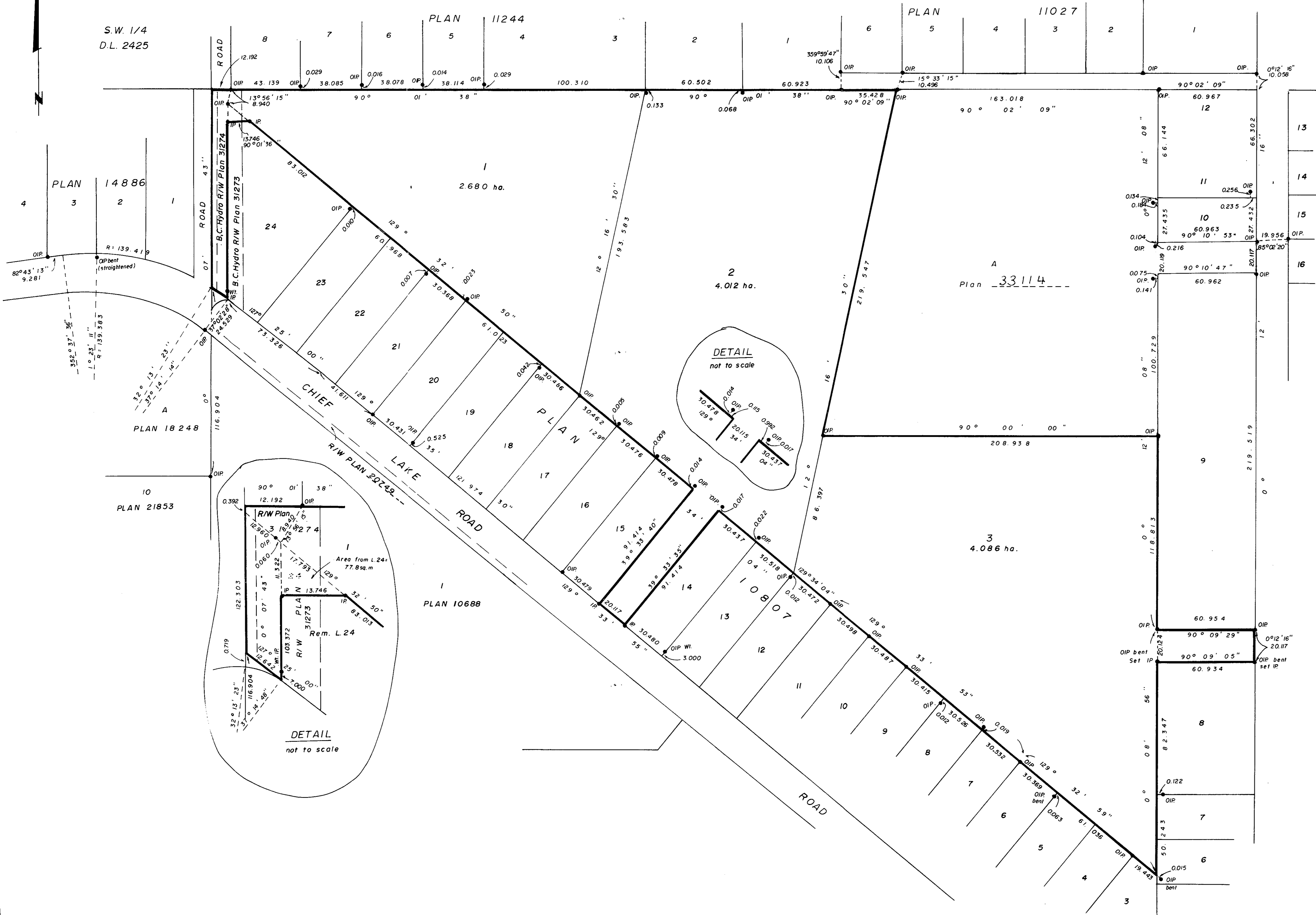


PLOTTED GW, FW

PLAN NO. 33278
Deposited in the Land Title Office at Prince
George this 12th day of 02 1988

W.G.B.
Registrar

D. L. 2425



**PLAN OF SUBDIVISION OF
PART OF LOT 24, PLAN 10807 and
PART OF REMAINDER OF N.E. 1/4
OF DISTRICT LOT 2424,
CARIBOO DISTRICT.**

SCALE: 1:1250 (Distances are in metres)

Bearings are astronomic derived from Plan 10807 - Southerly
bdy. of Lots 16 to 20 = 129° 35' 30"

- IP..... Standard Iron Post.
- Denotes "old"

I, G. Kilbride, a British Columbia Land Surveyor, of Prince George
in British Columbia, certify that I was present at and personally
superintended the survey represented by this plan and that the
survey and plan are correct. The survey was completed on
the 30th day of November, 1987.

Gordon Kilbride
G. Kilbride, B.C.L.S.

Approved under the Land Title Act
this 12th day of February, 1988.

P.L. [Signature]
Approving Officer
City of Prince George

North Central Investments Ltd.
Inc. # 125916

Carl Benson
Authorized Signatories

This plan lies within the Fraser Fort
George Regional District.

McWilliam, Whyte, Goble & Associates,
B.C. Land Surveyors, Phone: (604) 562-1196.
Prince George - Kamloops - Smithers - Salmon Arm.

REF. NO. 15423 QH 42