

PLOTTED GR

33277

PLAN OF SUBDIVISION OF
LOT 28 and PART OF LOT 18, PLAN 16905,
DISTRICT LOT 8169, CARIBOO DISTRICT.

SCALE : 1: 500 (DISTANCES ARE IN METRES)



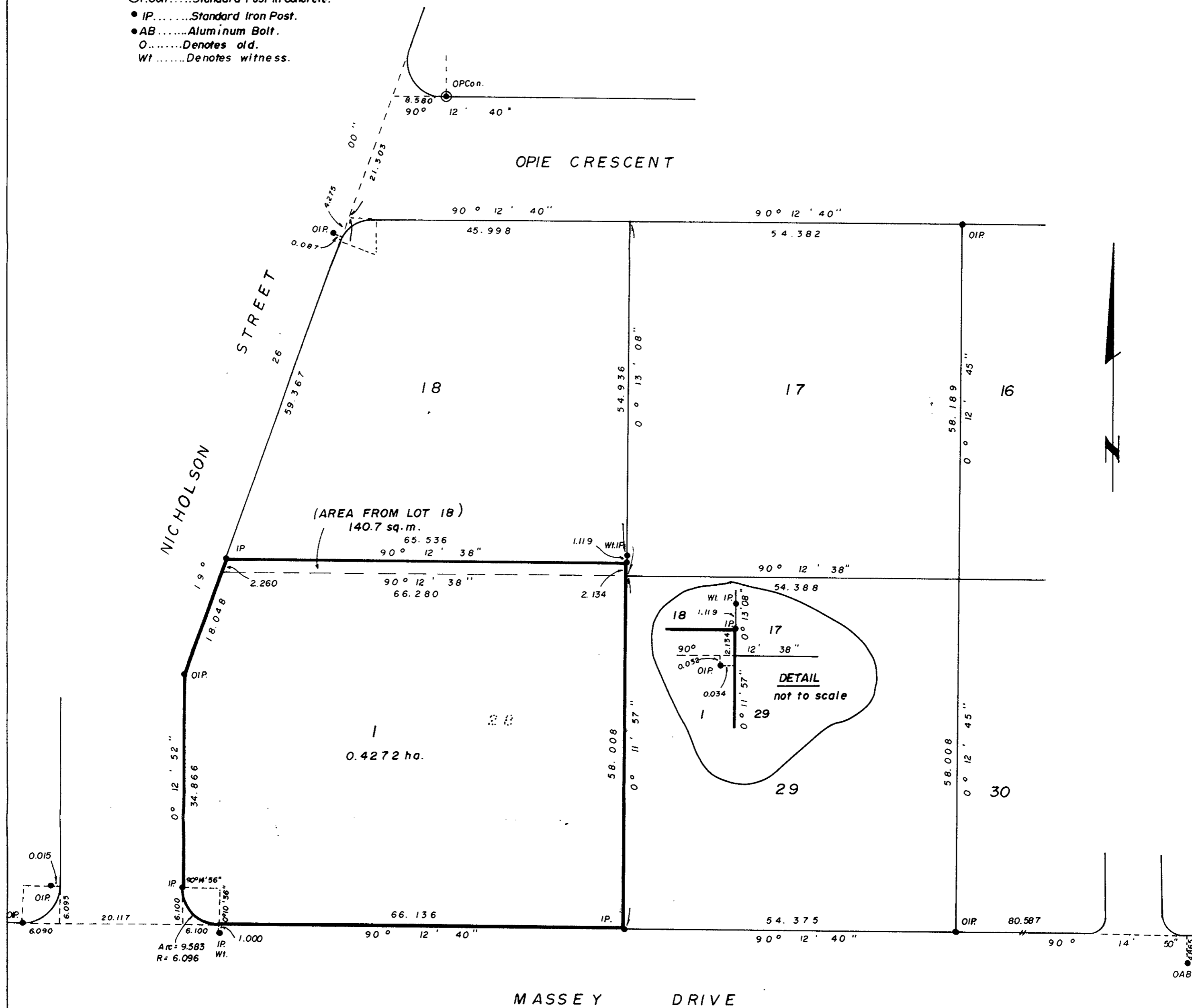
PLAN NO. _____

Deposited in the Land Title Office at
Prince George this 12 day of October
1988.

W. A. Landry
Registrar

Bearings are astronomic derived from Plan 16905 -
S. Bdy. L. 28 & 29, = 90° 12' 40".

- PCon Standard Post in Concrete.
- IP Standard Iron Post.
- AB Aluminum Bolt.
- Denotes old.
- Wt Denotes witness.



Owner: Deman Enterprises Ltd.

René Blangino
Drazen Mrazovic
Authorized Signatories.

Approved under the Land Title Act
this 11 day of May 1988

N. D. Anderson
Approving Officer
City of Prince George
Reapproved Sept. 26th 1988

I, G. Kilbride, a British Columbia Land Surveyor, of
Prince George in British Columbia certify that I
was present at and personally superintended the
survey represented by this plan, and that the survey
and plan are correct. The survey was completed on
the 8 day of December, 1987.

Gordon Kilbride
G. Kilbride, B.C.L.S.

Montreal TRUST COMPANY

R. P. M.
V. Bowley
Authorized Signatories.

This plan lies within the Fraser Fort
George Regional District.

McWilliam, Whyte, Goble & Assoc.,
B.C. Land Surveyors,
Prince George - (604) 562-1196
Kamloops - Smithers - Salmon Arm.

REF. NO. 87331 QP 38