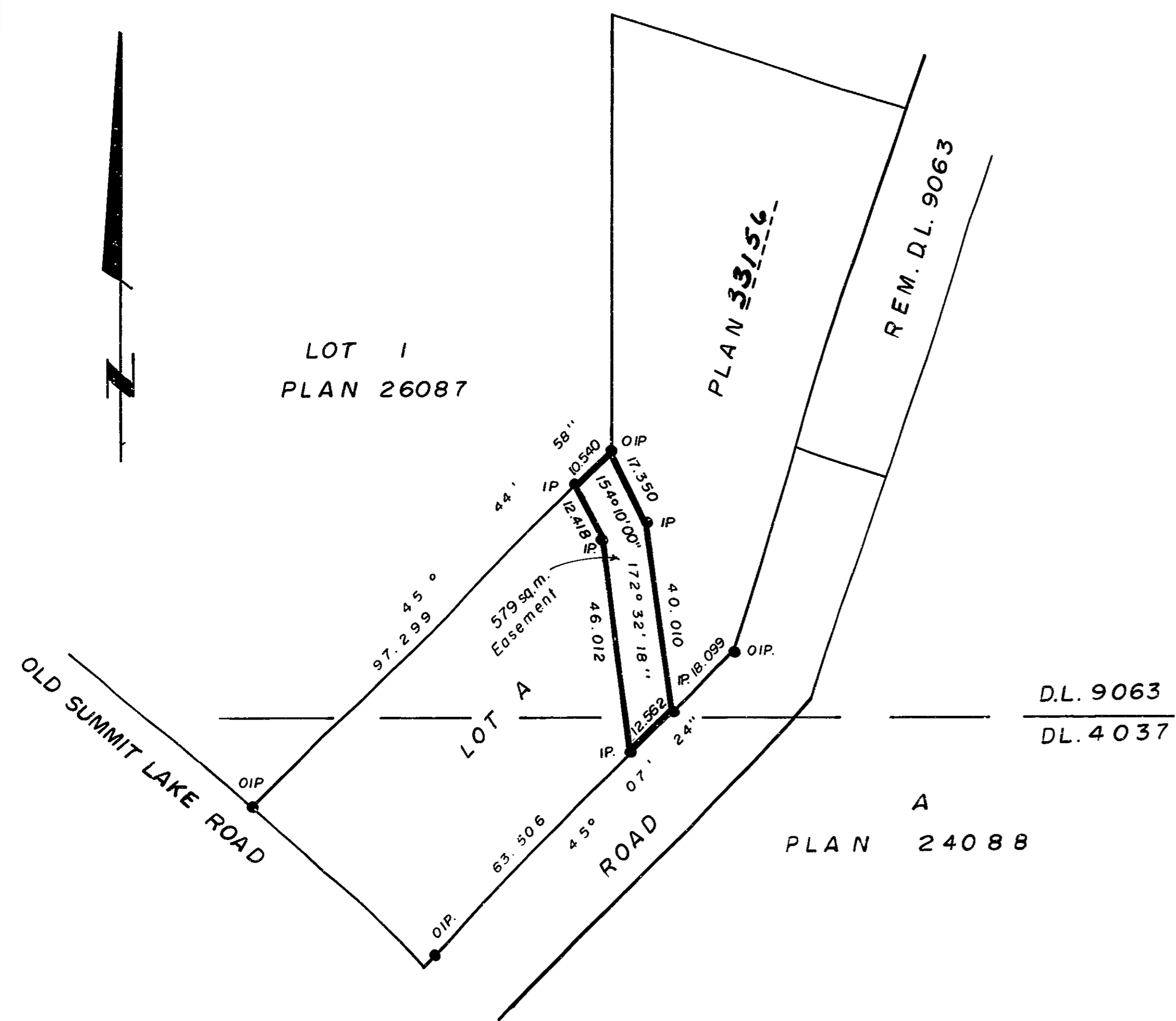


26-FF.226

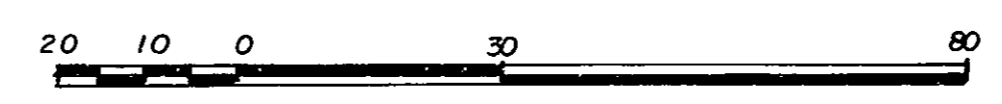
HO 5338

PLAN NO. 33157
 Deposited in the Land Title Office at Prince
 George this 16th day of Aug. 1988.

'W. J. Gandy'
 Registrar per dg.



REFERENCE PLAN OF
 EASEMENT IN LOT A, PLAN 33156 ,
 DISTRICT LOTS 4037 and 9063,
 CARIBOO DISTRICT.
 B.C.G.S. 936.097
 SCALE : 1:1250 (All distances are in metres.)



Bearings are astronomic derived from
 Plan -----
 ● I.P. Standard Iron Post.
 ○ Denotes old.

I, G. Kilbride, a British Columbia Land Surveyor,
 of Prince George in British Columbia, certify
 that I was present at and personally
 superintended the survey represented by
 this plan, and that the survey and plan are
 correct. The survey was completed on the
23rd day of May, 1988.

Gordon Kilbride
 G. Kilbride, B.C.L.S.

Book of Reference	
Description	Area
Lot A, Plan <u>33156</u>	579sq.m.

This plan lies within the Fraser Fort
 George Regional District.

McWilliam, Whyte, Goble & Assoc.,
 B.C. Land Surveyors,
 Prince George (604) 562-1196
 Kamloops - Smithers - Williams Lake

REF. NO. 88130-2 QU II