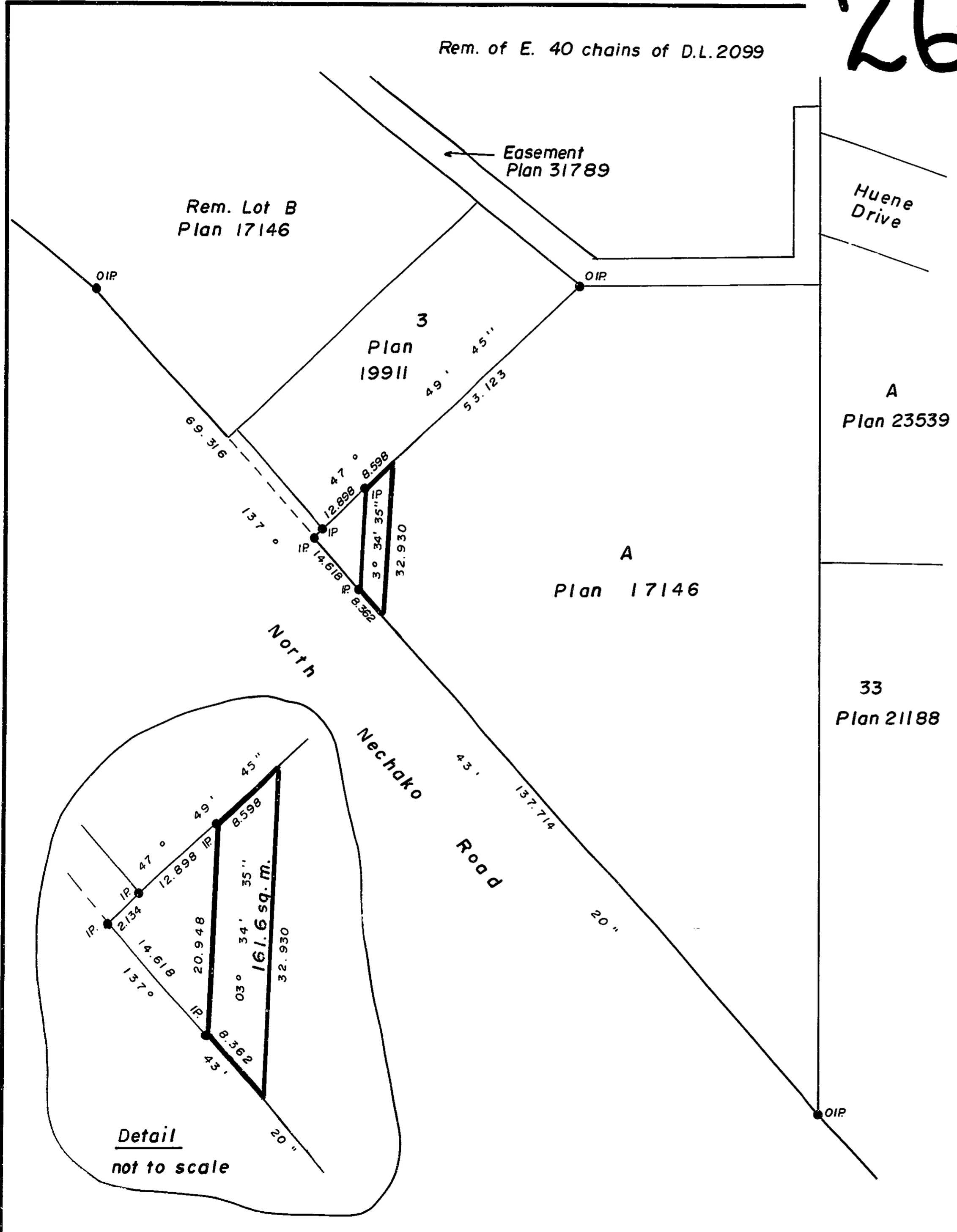


26 FF.226



PLAN NO. 33123
 Deposited in the Land Title Office at Prince George this 29th day of July 1988.

W. J. Gandy
 Registrar
pu 24

REFERENCE PLAN OF ACCESS EASEMENT
 IN LOT A, PLAN 17146, DISTRICT LOT 2099,
 CARIBOO DISTRICT.
 SCALE: 1:1000 (All distances are in metres)



Bearings are astronomic derived from Plan 17146 (137° 43' 20")
 ●IP..... Standard Iron Post.
 O..... Denotes old.

I, G. Kilbride, a British Columbia Land Surveyor of Prince George in British Columbia, certify that I was present at and personally superintended the survey represented by this plan, and that the survey and plan are correct. The survey was completed on the 1st day of March, 1988.

Gordon Kilbride
 G. Kilbride B.C.L.S.

Book of Reference	
Description	Area
Lot A, Plan 17146	161.6 sq.m.

This plan lies within the Fraser Fort George Regional District.

McWilliam, Whyte, Goble, & Associates.
 B.C. Land Surveyors,
 Prince George (604) 562-1196
 Kamloops-Smithers-Salmon Arm-Williams Lk.
 REF. NO. 88040 Q158