

PLOTTED FW, GW

PLAN NO. 33114

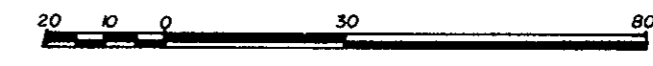
Deposited in the Land Title Office at Prince George  
this 21 day of July 1988.

W.D.G.  
Registrar

PLAN OF SUBDIVISION OF  
PART OF REMAINDER OF N.E. 1/4  
OF DISTRICT LOT 2424,  
CARIBOO DISTRICT.

B. C. G. S. 93J. 006

SCALE : 1 : 1250 (All distances are in metres)



Bearings are astronomic derived from  
Plan 15996.

- IP.... Standard Iron Post
- ..... Denotes old.

I, G. Kilbride, a British Columbia Land Surveyor, of  
Prince George in British Columbia certify that I  
was present at and personally superintended  
the survey represented by this plan and that the  
survey and plan are correct. The survey was  
completed on the 30 day of November, 1987.

*Gordon Kilbride*  
G. Kilbride, B.C.L.S.

Approved under the Land Title Act  
this 5th day of July 1988.

*C.E. [Signature]*  
Approving Officer  
City of Prince George

North Central Investments Ltd.  
Inc. # 125916

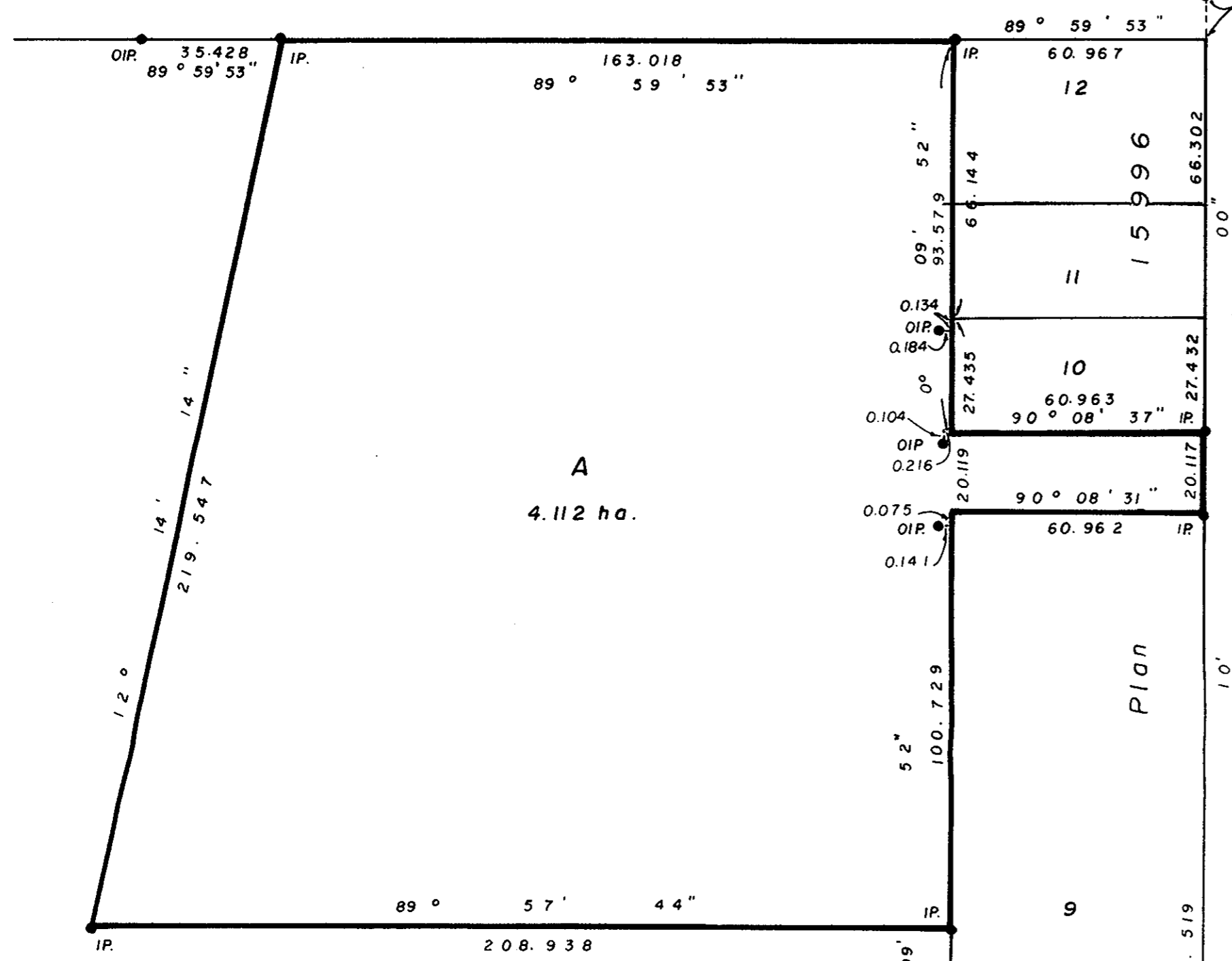
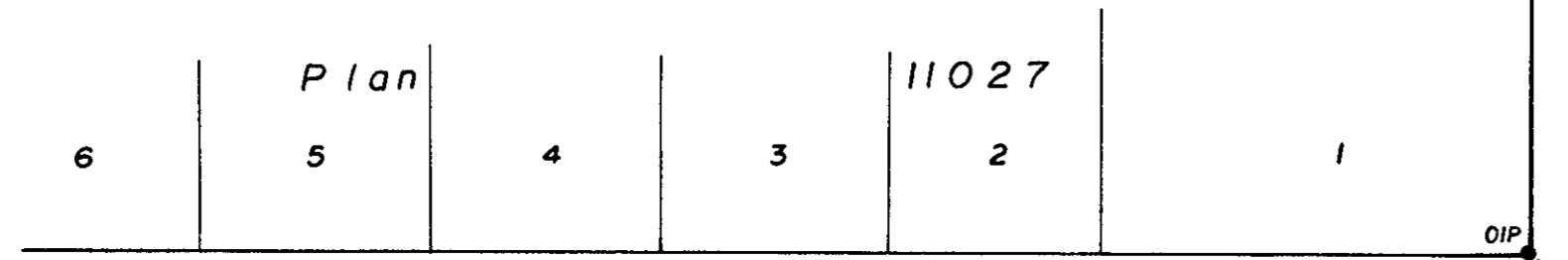
*Carl Benson*  
Authorized Signatory

*J. H. Boyle*  
Authorized Signatory

This plan lies within the Fraser  
Fort George Regional District.

McWilliam, Whyte, Goble & Associates,  
B.C. Land Surveyors,  
Prince George (604) 562-1196  
Kamloops - Smithers - Williams Lake

REF. NO. 15423-1



Rem. of N.E. 1/4  
of D.L. 2424

