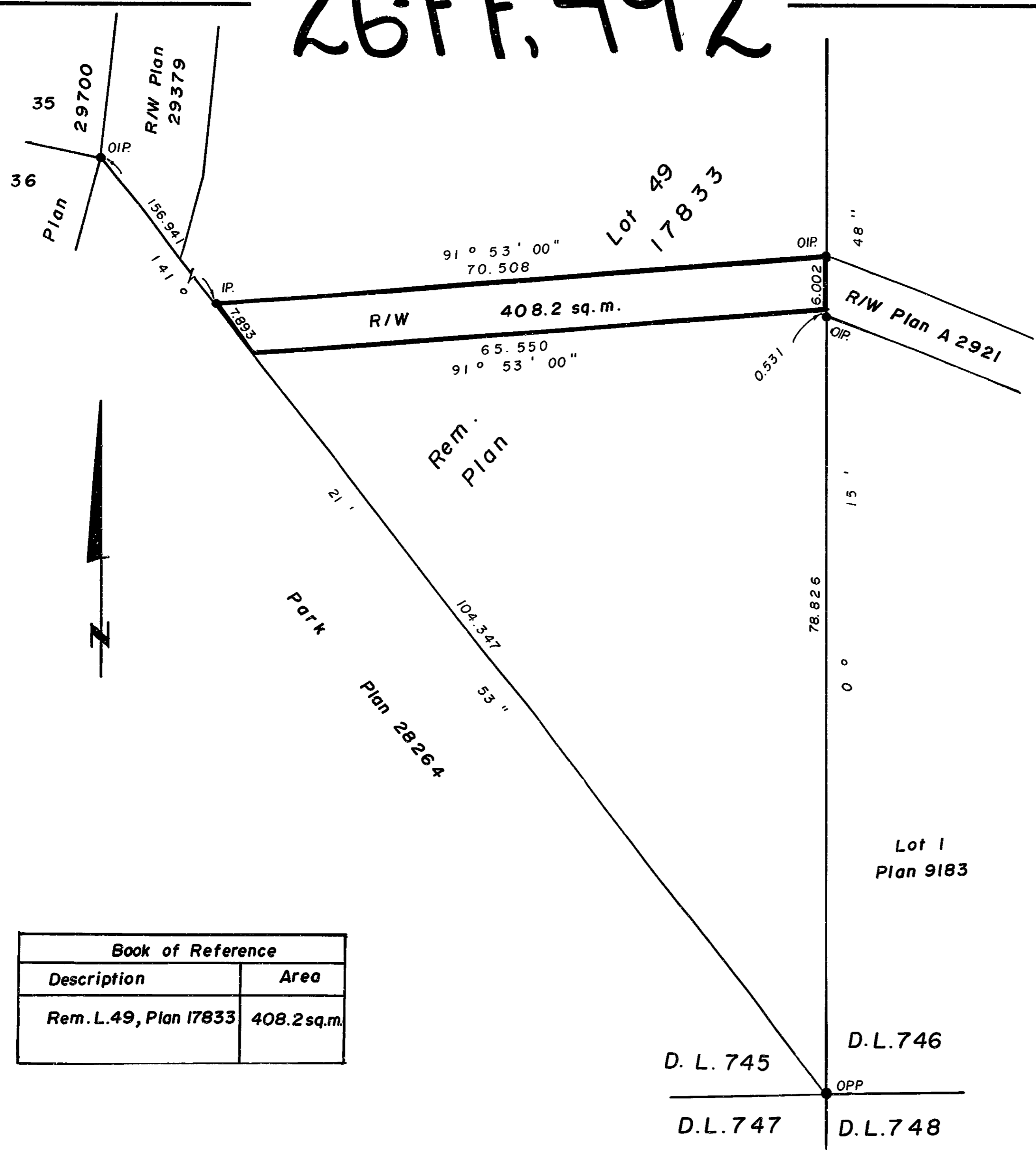


26FF.492



PLAN NO. 33039
 Deposited in the Land Title Office at Prince
 George this 9th day of June 1988.

W. G. Hardy
 Registrar
pw RH

REFERENCE PLAN OF
 STATUTORY RIGHT OF WAY OVER PART
 OF REMAINDER OF LOT 49, PLAN 17833,
 DISTRICT LOT 745, CARIBOO DISTRICT.

SCALE : 1 : 500 (Distances are in metres)

Bearings are astronomic derived from Plan 28264.
 ●IP..... Standard Iron Post.
 ●PP..... Standard Pipe Post.
 O Denotes old.

I, G. Kilbride, a British Columbia Land Surveyor, of
 Prince George in British Columbia, certify that I
 was present at and personally superintended the
 survey represented by this plan, and that the survey
 and plan are correct. The survey was completed on
 the 29th of March, 1988.

Gordon Kilbride
 G. Kilbride, B.C.L.S.

Book of Reference	
Description	Area
Rem. L.49, Plan 17833	408.2 sq.m.

D. L. 745
 D.L.746
 D.L.747
 D.L.748

This plan lies within the Fraser
 Fort George Regional District.

McWilliam, Whyte, Goble & Associates,
 B.C. Land Surveyors,
 Prince George (604) 562-1196
 Kamloops - Smithers - Williams Lake
 REF. NO. 88035 QW 21