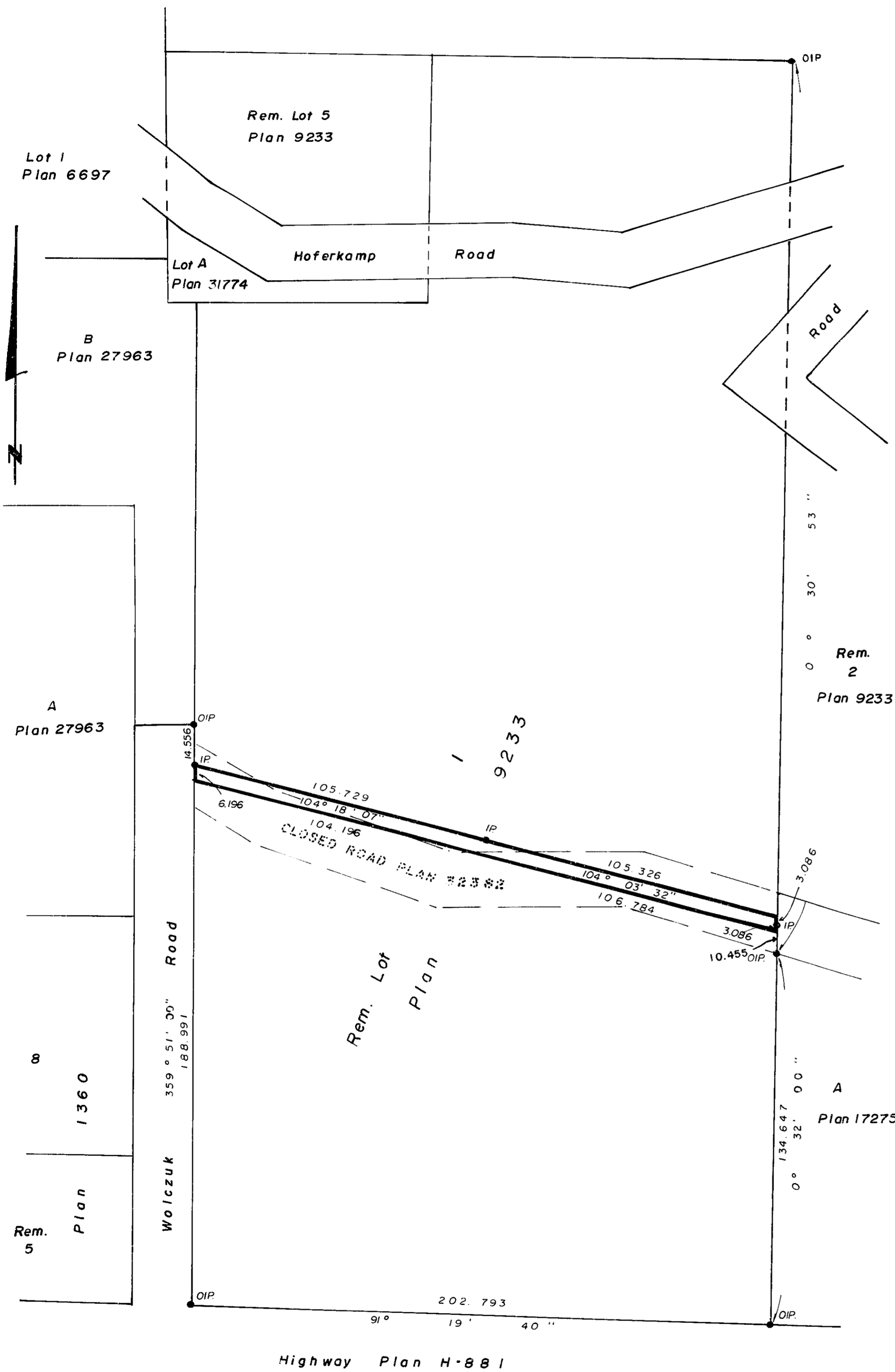


26-FF.226

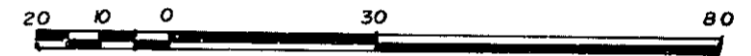
PLAN No 32974

Deposited in the Land Title Office at Prince George, B.C. this 27 day of May, 1988.

W. Brandy
Registrar



REFERENCE PLAN OF RIGHT-OF-WAY FOR UTILITY PURPOSES OVER PART OF REMAINDER LOT 1, PLAN 9233, DISTRICT LOT 823, CARIBOO DISTRICT. AND CLOSED ROAD, PLAN 32382, SCALE: 1:1250 (DISTANCES ARE IN METRES)



Bearings are astronomic derived from Plan H881.

- IP.....Standard Iron Post.
- O.....Denotes old.

I, Gordon Kilbride, a British Columbia Land Surveyor, of Prince George, in British Columbia, certify that I was present at and did personally superintend the survey represented by this plan, and that the survey and plan are correct. The survey was completed on the 29th day of August, 1986.

Gordon Kilbride
Gordon Kilbride, B.C.L.S.

Book of Reference	
Description	Area
Rem. Lot 1, Plan 9233	452 sq. m.
Closed Road, Plan 32382	814 sq. m.

This plan lies within the Fraser-Fort George Regional District.

WD USHER & ASSOCIATES
LAND SURVEYORS
PRINCE GEORGE — B.C.
REF. NO. 15255-2 QP 1