

EXPLANATORY AND REFERENCE PLAN OF LEASE OF PART OF GROUND FLOOR OF A BUILDING ON LOT 3, PLAN 23130 (BEING PART OF LEASE PLAN 29482) AND EASEMENTS ON PARTS OF LOT 3, PLAN 23130, DISTRICT LOT 754. CARIBOO DISTRICT.

PLAN NO. 32958

Deposited in the Land Title Office at Prince George this 24 day of May 1988.

W.G.S. Registrar

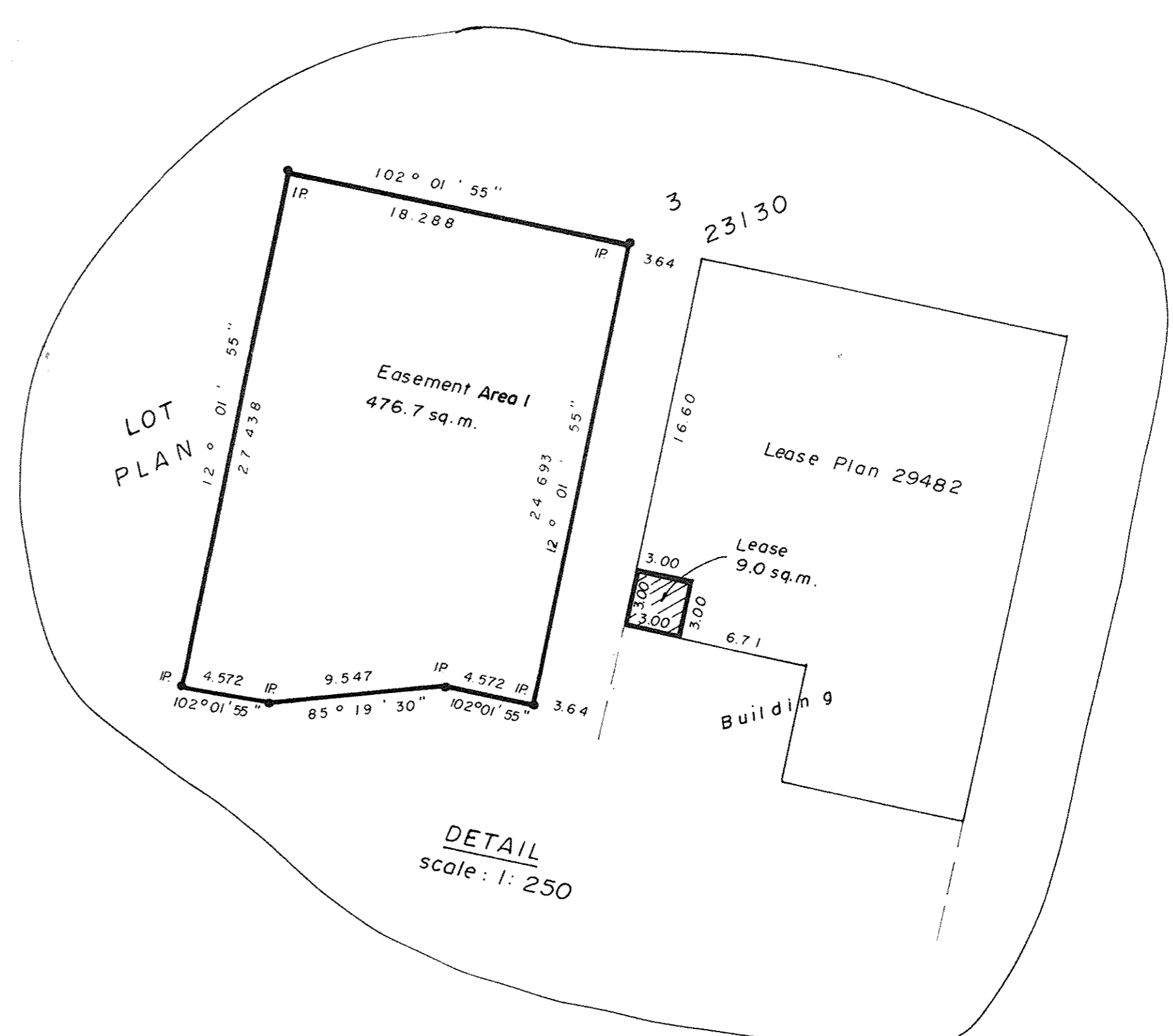
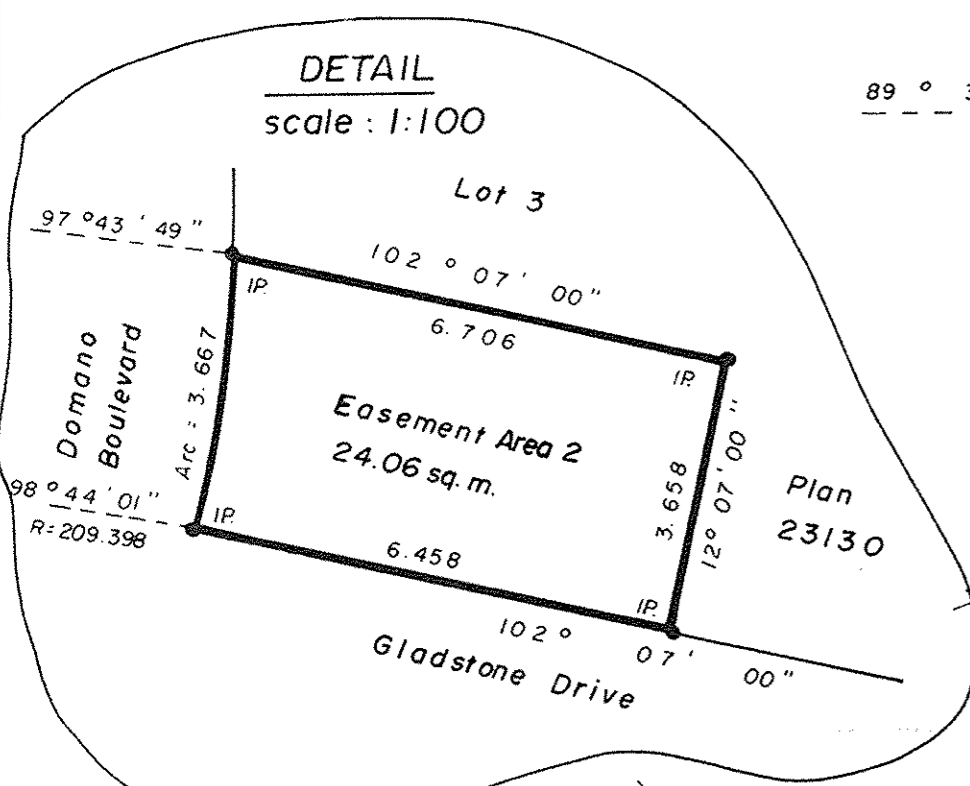
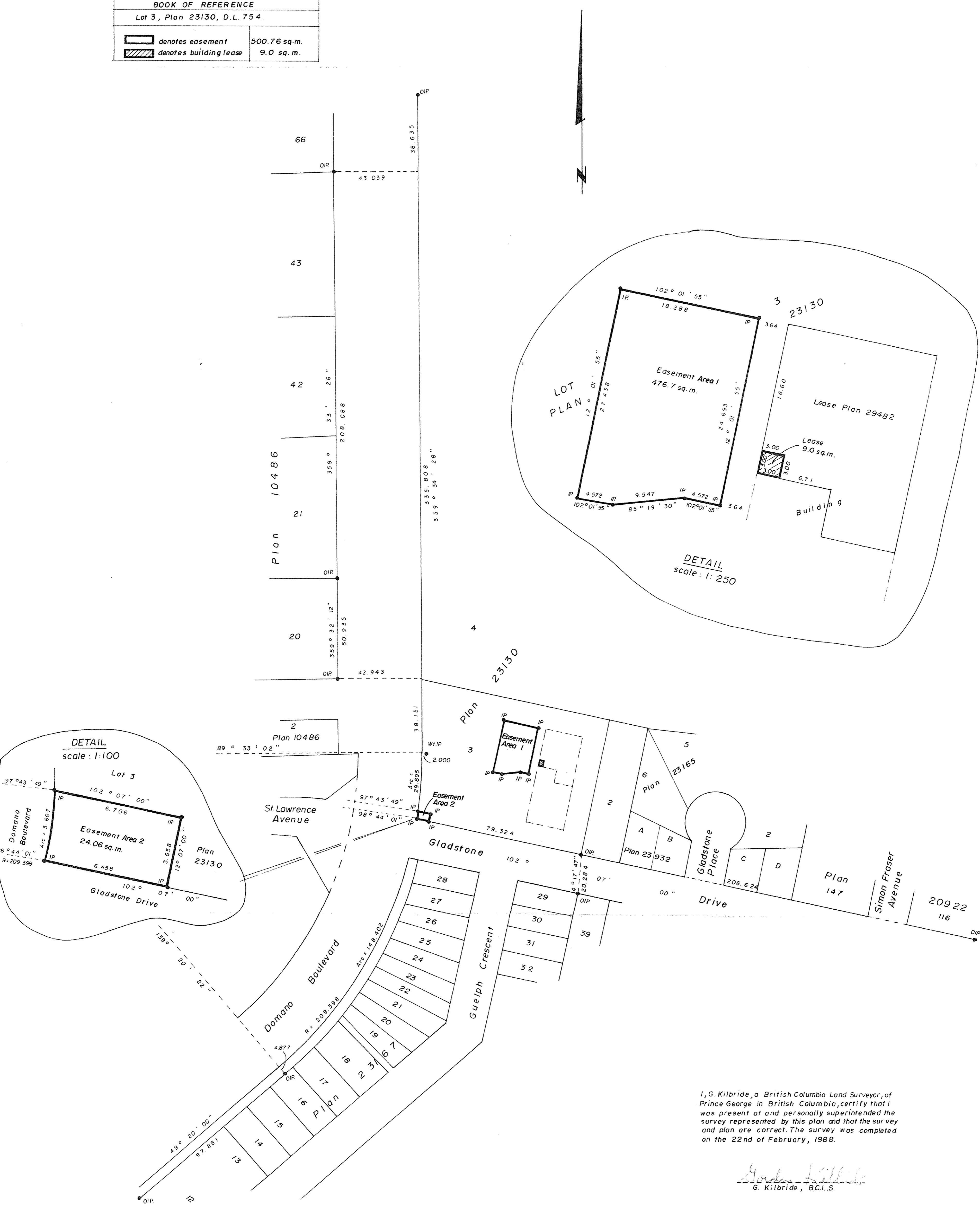
SCALE: 1:1000 (Distances are in metres)



Bearings are astronomic derived from Plan 23167, North bdy. of Lots 12-16 = 49° 20' 00"

- IP..... Standard Iron Post
O..... Denotes old.
Wt..... Denotes witness.

Table with 2 columns: Description and Area. 'denotes easement' is 500.76 sq.m. 'denotes building lease' is 9.0 sq.m.



I, G. Kilbride, a British Columbia Land Surveyor, of Prince George in British Columbia, certify that I was present at and personally superintended the survey represented by this plan and that the survey and plan are correct. The survey was completed on the 22nd of February, 1988.

Gordon Kilbride, G. Kilbride, B.C.L.S.

This plan lies within the Fraser Fort George Regional District.

McWilliam, Whyte, Goble, & Associates, B.C. Land Surveyors, Prince George - (604) 562-1196 Kamloops - Smithers - Salmon Arm.

REF NO 88021 QK 48