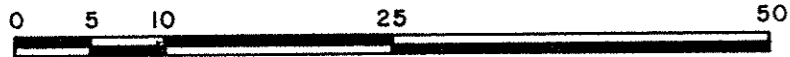


EXPLANATORY PLAN OF  
 STATUTORY RIGHT-OF-WAY THROUGH  
 LOT A, PLAN 32932,  
 DISTRICT LOT 2611,  
 CARIBOO DISTRICT - BRITISH COLUMBIA.

PLAN NO. 32933

DEPOSITED IN THE LAND TITLE  
 OFFICE AT PRINCE GEORGE, B.C., THIS  
6 DAY OF May, 1988.

SCALE 1:500

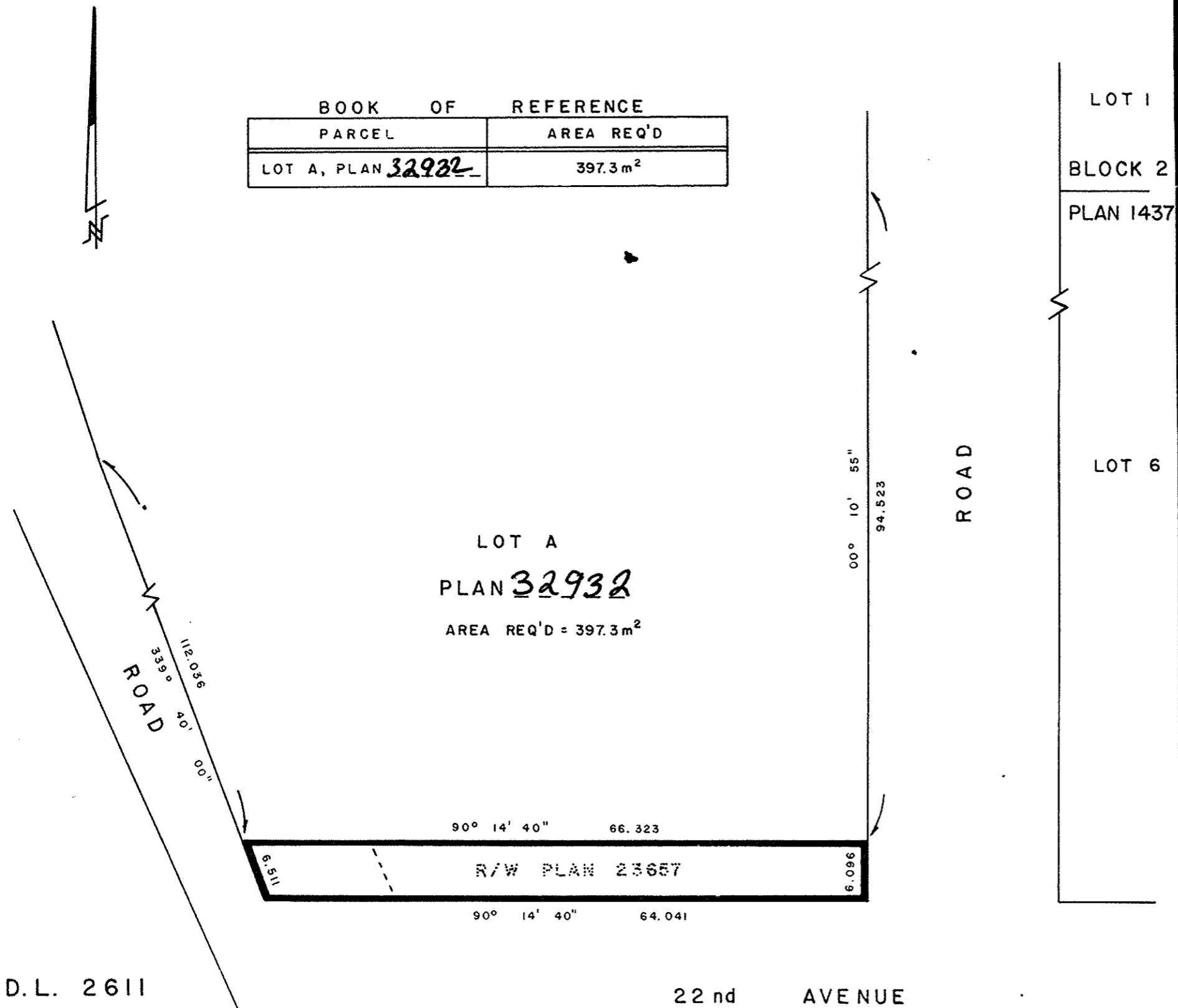


ALL DISTANCES ARE IN METRES.

BEARINGS ARE ASTRONOMIC, DERIVED FROM THE  
 SOUTH BOUNDARY OF LOT A, PLAN 32932.

W.G.G.  
 REGISTRAR

BOOK OF REFERENCE	
PARCEL	AREA REQ'D
LOT A, PLAN <u>32932</u>	397.3 m <sup>2</sup>



D.L. 2611

22nd AVENUE

A	4	3
PLAN 21590	PLAN	8809

THIS PLAN LIES WITHIN THE FRASER  
 FORT GEORGE REGIONAL DISTRICT.

CERTIFIED CORRECT  
 ACCORDING TO PRINCE GEORGE  
 LAND TITLE OFFICE RECORDS,  
 THIS 20th DAY OF NOV., 1987.

R.L. Johns  
 R.L. JOHNS, B.C.L.S.

R.L. JOHNS & ASSOCIATES  
 LEGAL AND ENGINEERING SURVEYS  
 P.O. BOX 824  
 PRINCE GEORGE - B.C.  
 V2L 4V3

85-26-E