

FKU

REFERENCE PLAN TO ACCOMPANY  
CITY OF PRINCE GEORGE BYLAW NO. 4872, ,  
CLOSING PART OF ROAD ADJACENT TO LOT 2, BLOCK 1, PLAN 1437,  
AND ESTABLISHING AS ROAD PART OF LOT 1, BLOCK 1, PLAN 1437,  
DISTRICT LOT 2611, CARIBOO DISTRICT.

SCALE 1:1000



BEARINGS ARE ASTRONOMIC, DERIVED FROM THE SOUTH  
BOUNDARY OF 22nd AVENUE, AS SHOWN ON PLAN 21590.

LEGEND

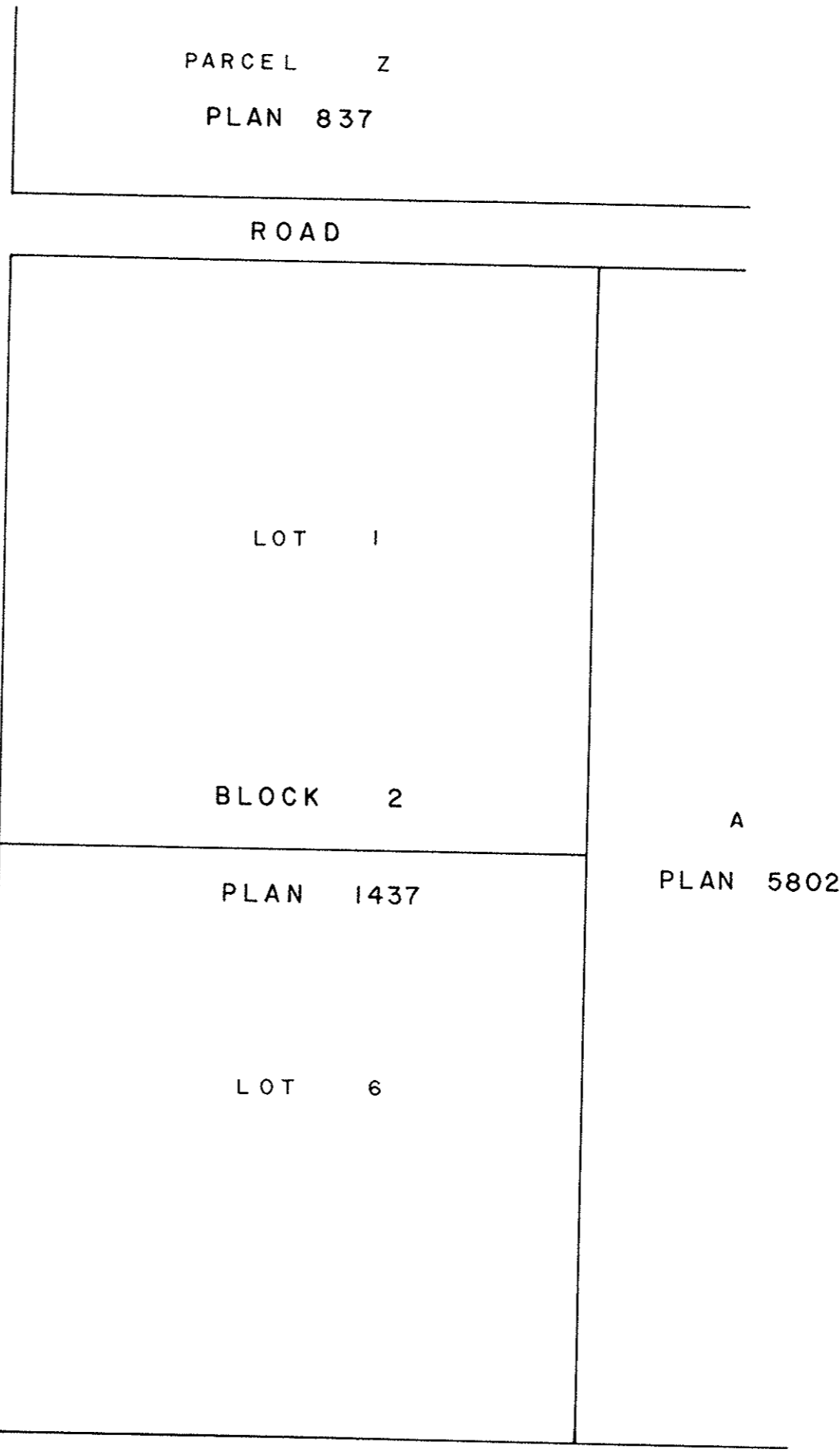
- OP CON DENOTES AN OLD CONCRETE MONUMENT FOUND.
- OIP DENOTES AN OLD IRON PIN FOUND.
- IPF DENOTES AN UNREGISTERED IRON PIN FOUND.
- IP DENOTES AN IRON PIN SET.

PLAN NO. 32931

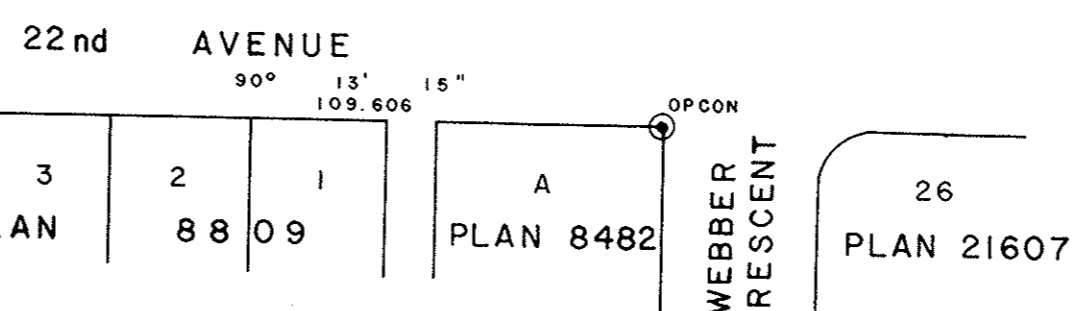
DEPOSITED IN THE LAND TITLE OFF  
AT PRINCE GEORGE, B.C., THIS  
6th DAY OF May, 1988.

WGB  
REGISTRAR

PARCEL A	2	W. 1/2 LOT 3	E. 1/2 LOT 3
	BLOCK 19	PLAN 837	



D.L. 2611



I, RONALD L. JOHNS, A BRITISH COLUMBIA LAND  
SURVEYOR, OF PRINCE GEORGE, IN BRITISH COLUMBIA,  
CERTIFY THAT I WAS PRESENT AT AND PERSONALLY  
SUPERINTENDED THE SURVEY REPRESENTED BY THIS  
PLAN AND THAT THE SURVEY AND PLAN ARE CORRECT.  
THE SURVEY WAS COMPLETED ON THE 15th DAY OF  
APRIL, 1985.

*R.L. Johns*

R.L. JOHNS, B.C.L.S.

THIS PLAN LIES WITHIN THE FRASER  
FORT GEORGE REGIONAL DISTRICT.

R.L. JOHNS & ASSOCIATES  
LEGAL AND ENGINEERING SURVEYS  
P.O. BOX 824  
PRINCE GEORGE - B.C.  
V2L 4V3