

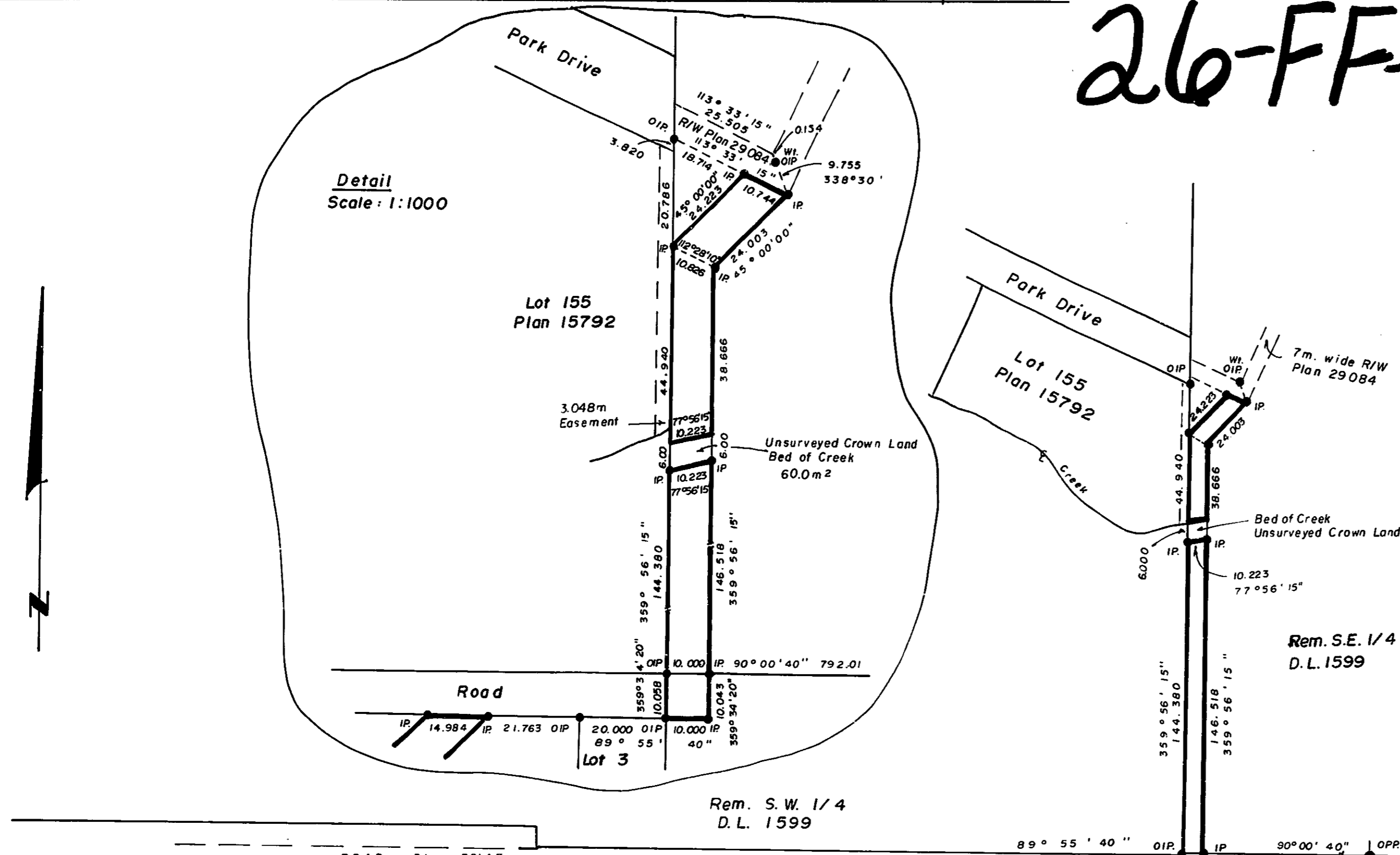
26-FF-226

PLAN NO. 32885

DEPOSITED IN THE LAND TITLE OFFICE AT PRINCE GEORGE
THIS 6th DAY OF April 1988

W.G. Landy per R
REGISTRAR

Detail
Scale: 1:1000



REFERENCE PLAN OF EASEMENT
IN LOT 2 OF PLAN 32145
D.L. 1598, N.E. 1/4 D.L. 1598,
REMAINDER OF S.E. 1/4 D.L. 1599,
CARIBOO DISTRICT.

SCALE: 1:2000 (All distances are in metres.)



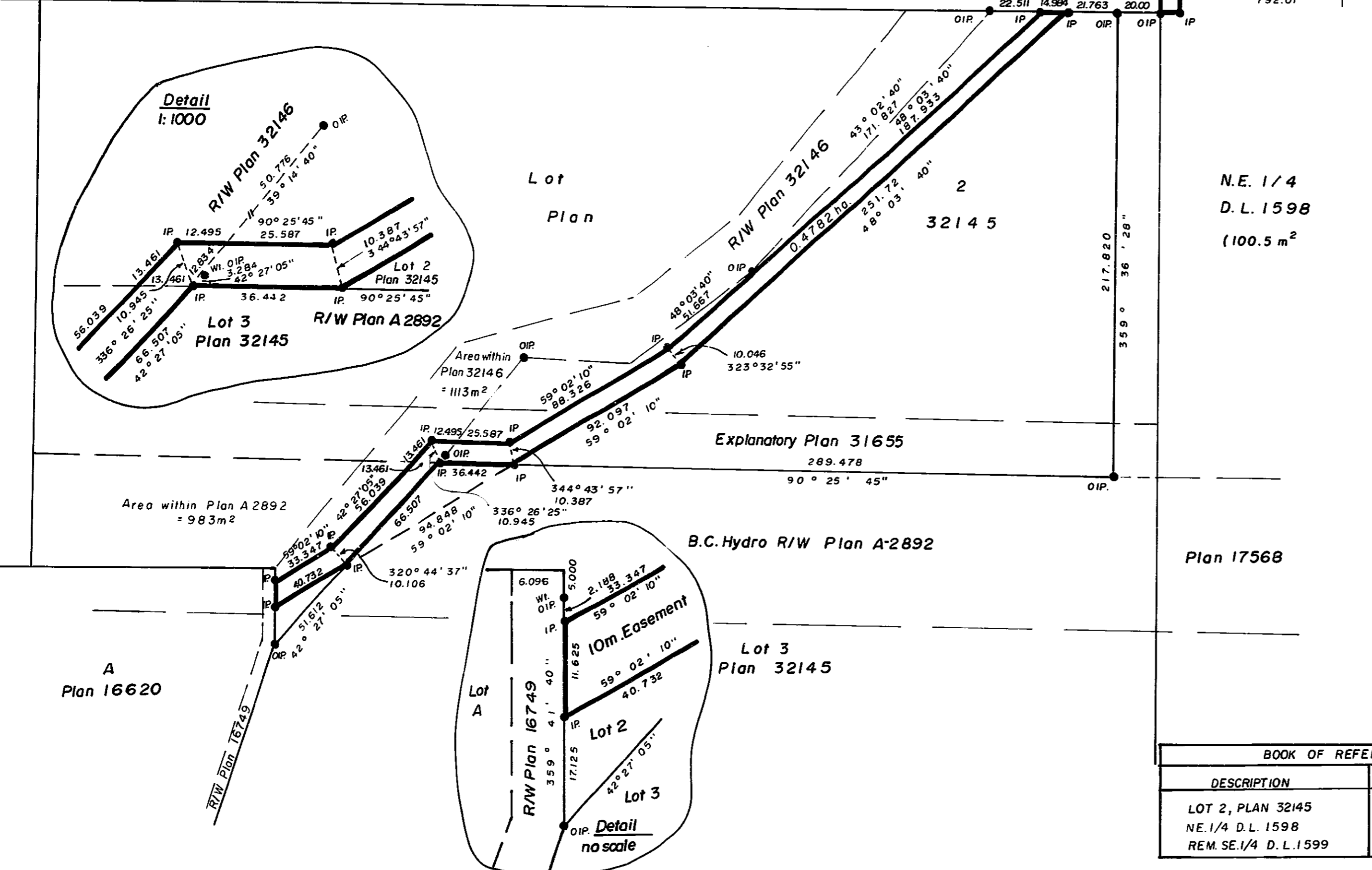
BEARINGS ARE ASTRONOMIC DERIVED FROM SOUTH BOUNDARY
OF LOT 2 SHOWN AS 90°25'45" ON PLAN 32145.

- IP.....STANDARD IRON POST.
-DENOTES "OLD".
- WT.....DENOTES "WITNESS"

I, V. BARTELL, A BRITISH COLUMBIA LAND SURVEYOR, OF
PRINCE GEORGE IN BRITISH COLUMBIA, CERTIFY THAT I WAS
PRESENT AT AND PERSONALLY SUPERINTENDED THE SURVEY
REPRESENTED BY THIS PLAN, AND THAT THE SURVEY AND PLAN
ARE CORRECT. THE SURVEY WAS COMPLETED ON THE 3rd DAY OF
SEPTEMBER 1987.

V. Bartell
V. BARTELL, B.C.L.S.

THIS PLAN LIES WITHIN THE FRASER FORT GEORGE REGIONAL
DISTRICT.



BOOK OF REFERENCE	
DESCRIPTION	AREA
LOT 2, PLAN 32145	0.4782 ha.
N.E. 1/4 D.L. 1598	100.5 m ²
REM. S.E. 1/4 D.L. 1599	0.2114 ha.

McWILLIAM, WHYTE, GOBLE, & ASSOCIATES,
B.C. LAND SURVEYORS,
PRINCE GEORGE - KAMLOOPS - SMITHERS - SALMON ARM

REF. NO. 87147 (R A)

(L. 1598)