

REFERENCE PLAN TO ACCOMPANY
CITY OF PRINCE GEORGE BY LAW
NO. 5008 DEDICATING AS ROAD
PART OF LOT 16, BLOCK 131, PLAN
1268, AND CLOSING AS LANE PART
OF PLAN B 7778. ALL IN D.L. 343.
CARIBOO DISTRICT.

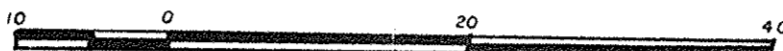
PLAN NO. 32871

Deposited in the Land Title Office at Prince
George this 29th day of March 1988.

W.D.
Registrar

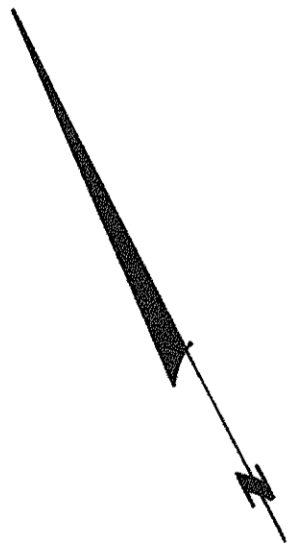
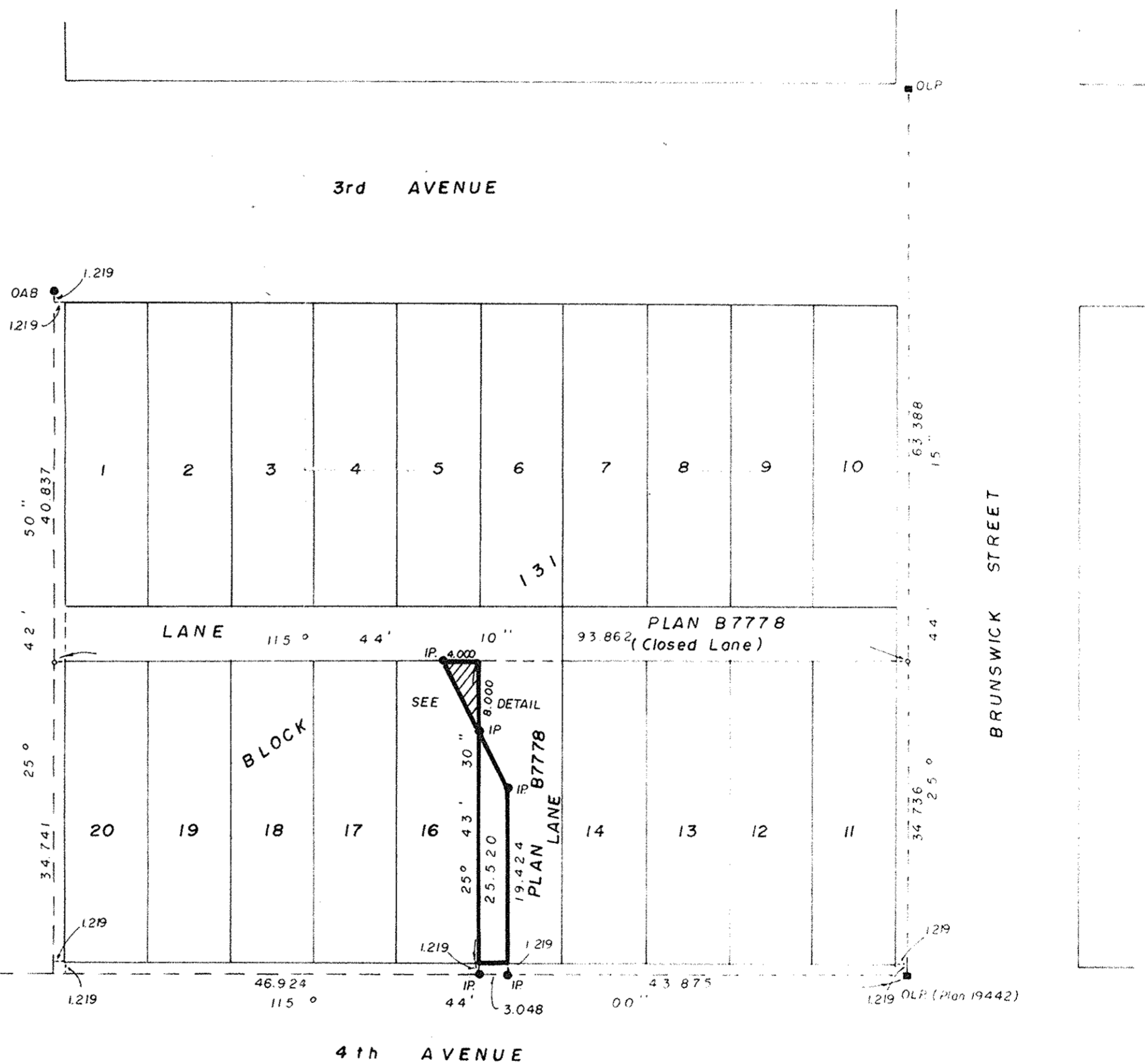
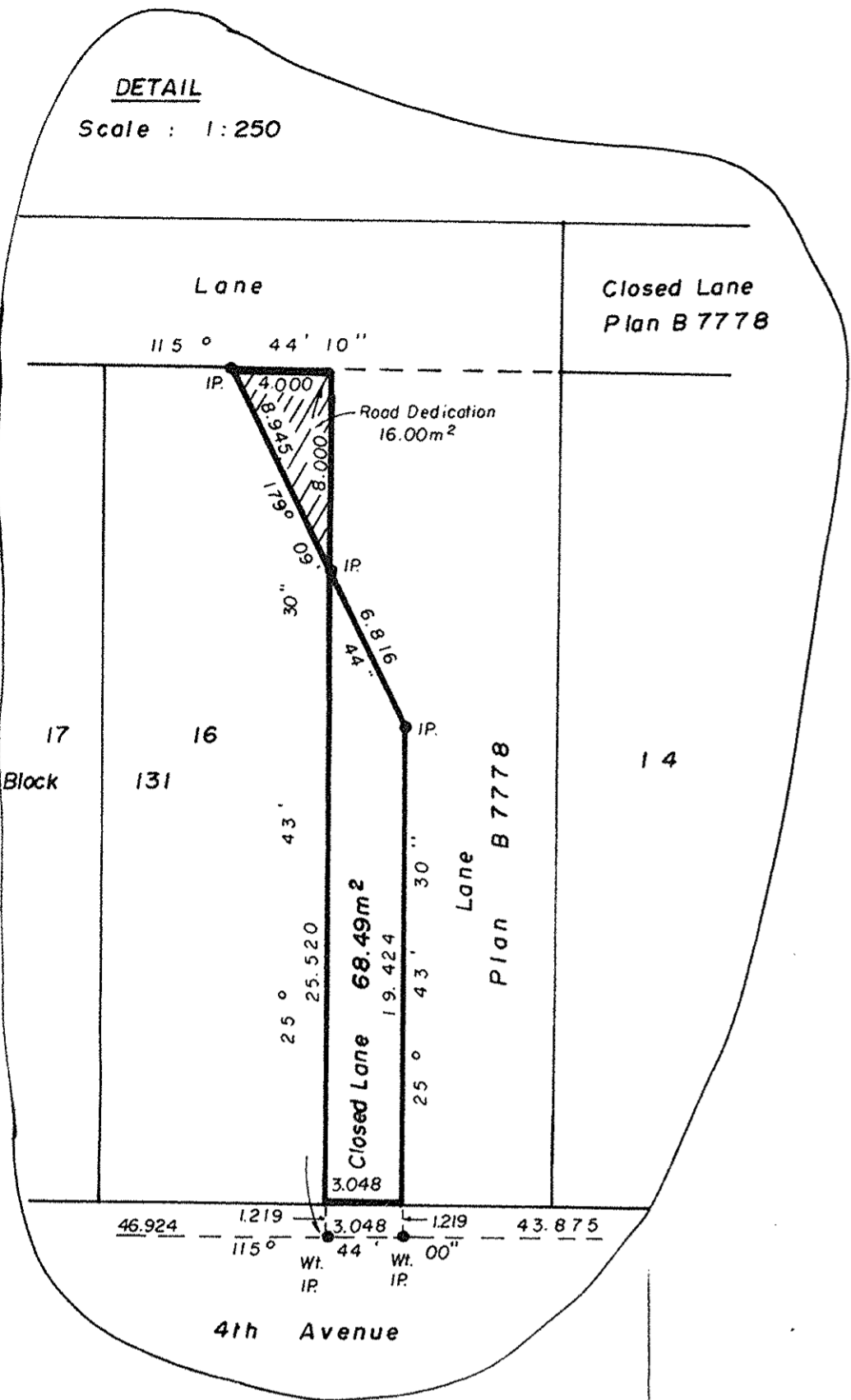
By law # 5008

Scale : 1: 500 (All distances are in metres)



Road dedication shown thus.

DETAIL
Scale : 1: 250



Bearings are astronomic derived from
Plan 1268.

- IP..... Standard Iron Post.
- AB..... Aluminum Bolt.
- LP..... Lead Plug
- Denotes "old"

I D. Keown a British Columbia Land Surveyor
of Prince George in British Columbia certify that
I was present at and personally superintended
the survey represented by this plan and that the
survey and plan are correct. The survey was
completed on the 28th day of October 1987.

D. Keown
D. Keown, B.C.L.S.

This plan lies within the Fraser Fort
George Regional District.

McWilliam, Whyte, Goble & Associates,
B.C. Land Surveyors
Prince George - Kamloops - Smithers - Salmon Arm.
REF. NO. 87238 RA