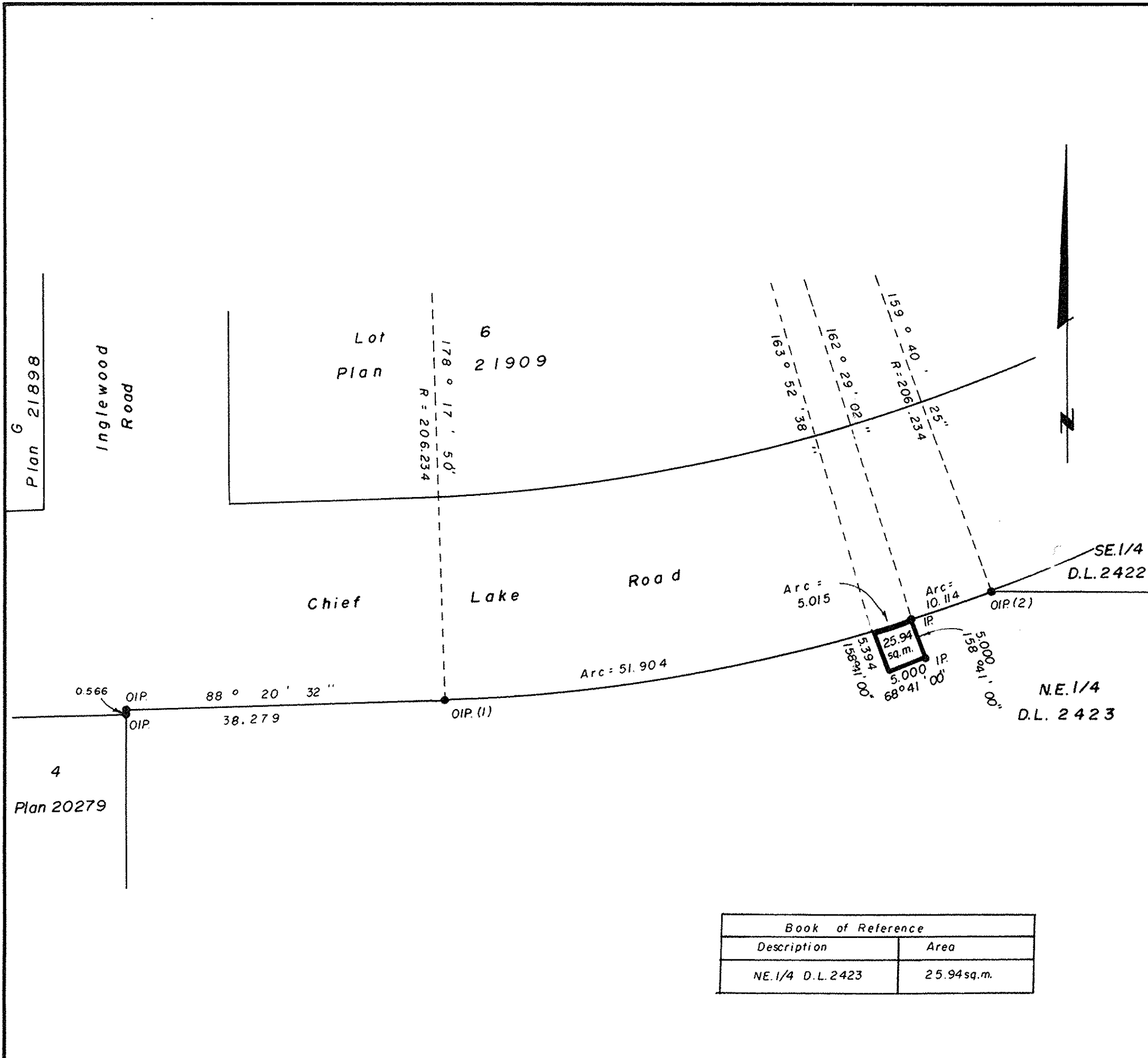


DK



RECEIVED
APR 12 1988
 DEPARTMENT OF ASSESSMENT
 AUTHORITY
 (PRINCE GEORGE)

PLAN NO. 32860
 Deposited in the Land Title Office of Prince George this 28 day of March 1988.

----- WGG -----
 Registrar

90-22043.000
 NC 251

BRITISH COLUMBIA TELEPHONE COMPANY

**REFERENCE PLAN OF EASEMENT
 IN N.E. 1/4 DISTRICT LOT 2423,
 CARIBOO DISTRICT.**

Scale: 1:500 (Distances are in metres.)



Bearings are astronomic derived from chord between OIP(1) - OIP(2) = $79^\circ 58' 08''$

- IP.....Standard Iron Post.
-Denotes old.

I, G. Kilbride, a British Columbia Land Surveyor, of Prince George in British Columbia, certify that I was present at and personally superintended the survey represented by this plan, and that the survey and plan are correct. The survey was completed on the 5th day of January, 1988.

Gordon Kilbride
 G. Kilbride, B.C.L.S.

This plan lies within the Fraser Fort George Regional District.

McWilliam, Whyte, Goble, & Associates,
 B.C. Land Surveyors,
 Prince George (604) 562-1196
 Kamloops - Smithers - Salmon Arm.

REF. NO 87343-1 Q154