

PLAN OF SUBDIVISION OF PART OF
 LOT 1, PLAN 30220,
 DISTRICT LOT 2433,
 CARIBOO DISTRICT - BRITISH COLUMBIA

32796

PLAN NO. _____

DEPOSITED IN THE LAND TITLE
 OFFICE AT PRINCE GEORGE, B.C., THIS
 5 DAY OF Feb, 1988.

SCALE 1:500

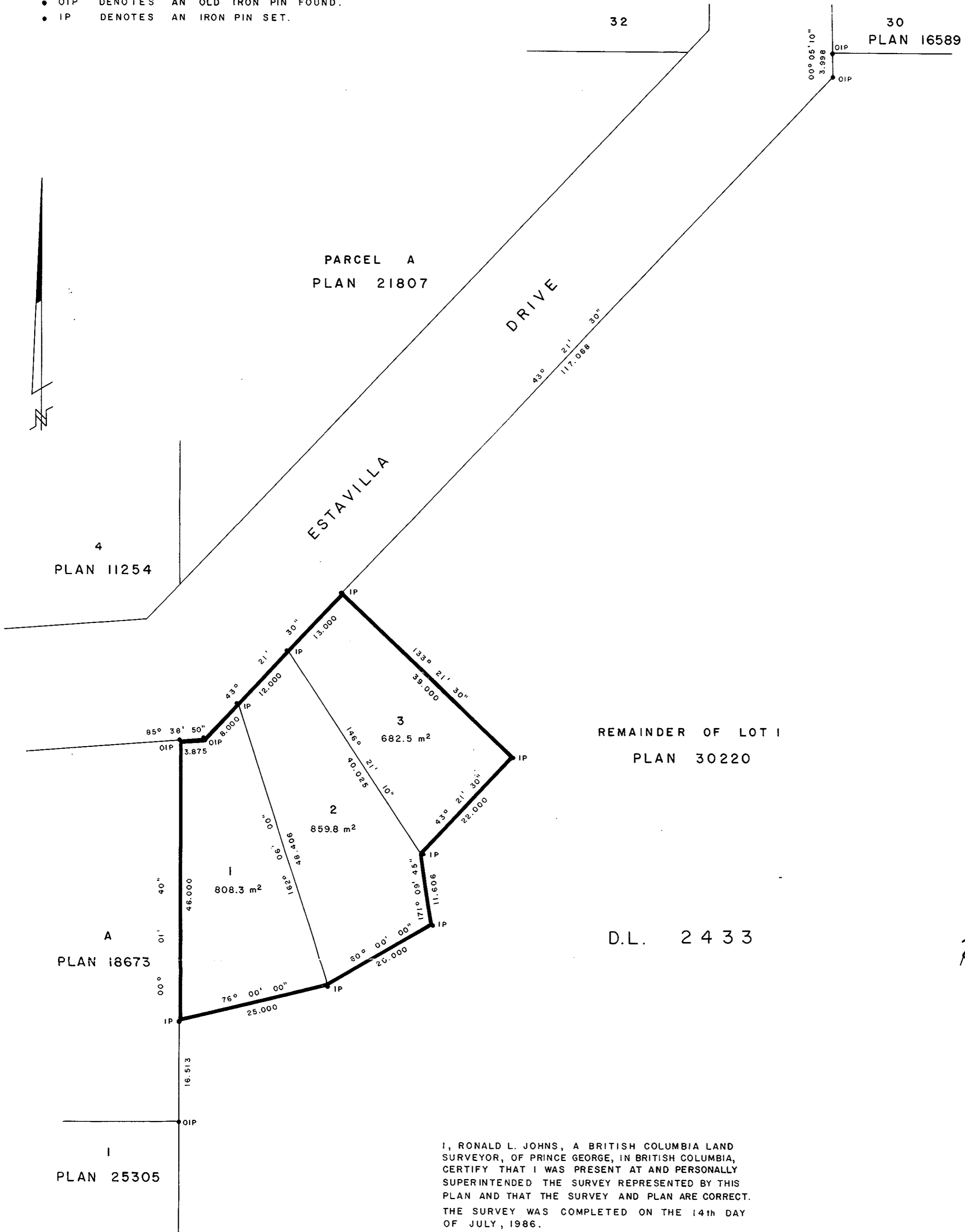


BEARINGS ARE ASTRONOMIC, DERIVED FROM THE SOUTHEASTERLY
 BOUNDARY OF ESTAVILLA DRIVE, AS SHOWN ON PLAN 30220.

LEGEND

- OIP DENOTES AN OLD IRON PIN FOUND.
- IP DENOTES AN IRON PIN SET.

 REGISTRAR



NORTHSIDE DEVELOPMENTS LTD.

B. Mackay, 1988
 AUTHORIZED SIGNATORY

 AUTHORIZED SIGNATORY

REMAINDER OF LOT 1
 PLAN 30220

APPROVED, UNDER THE LAND TITLE
 ACT, THIS 16 DAY OF Novem., 1988
 C.E.O.

C. E. Obst
 APPROVING OFFICER, CITY OF
 PRINCE GEORGE.

Reapproved Feb 4th 1988

C. E. Obst

D.L. 2433

THIS PLAN LIES WITHIN THE
 FRASER-FORT GEORGE REGIONAL
 DISTRICT.

I, RONALD L. JOHNS, A BRITISH COLUMBIA LAND
 SURVEYOR, OF PRINCE GEORGE, IN BRITISH COLUMBIA,
 CERTIFY THAT I WAS PRESENT AT AND PERSONALLY
 SUPERINTENDED THE SURVEY REPRESENTED BY THIS
 PLAN AND THAT THE SURVEY AND PLAN ARE CORRECT.
 THE SURVEY WAS COMPLETED ON THE 14th DAY
 OF JULY, 1986.

Ronald L. Johns
 R.L. JOHNS, B.C.L.S.

R.L. JOHNS & ASSOCIATES
 LEGAL AND ENGINEERING SURVEYS
 P.O. BOX 824
 PRINCE GEORGE - B.C.
 V2L 4V3