

26-FF-226

REFERENCE PLAN OF EASEMENT
ON PART OF N.W. 1/4 OF N.W. 1/4 OF
DISTRICT LOT 1599, CARIBOO DISTRICT.

SCALE: 1:1000 (Distances are in metres)

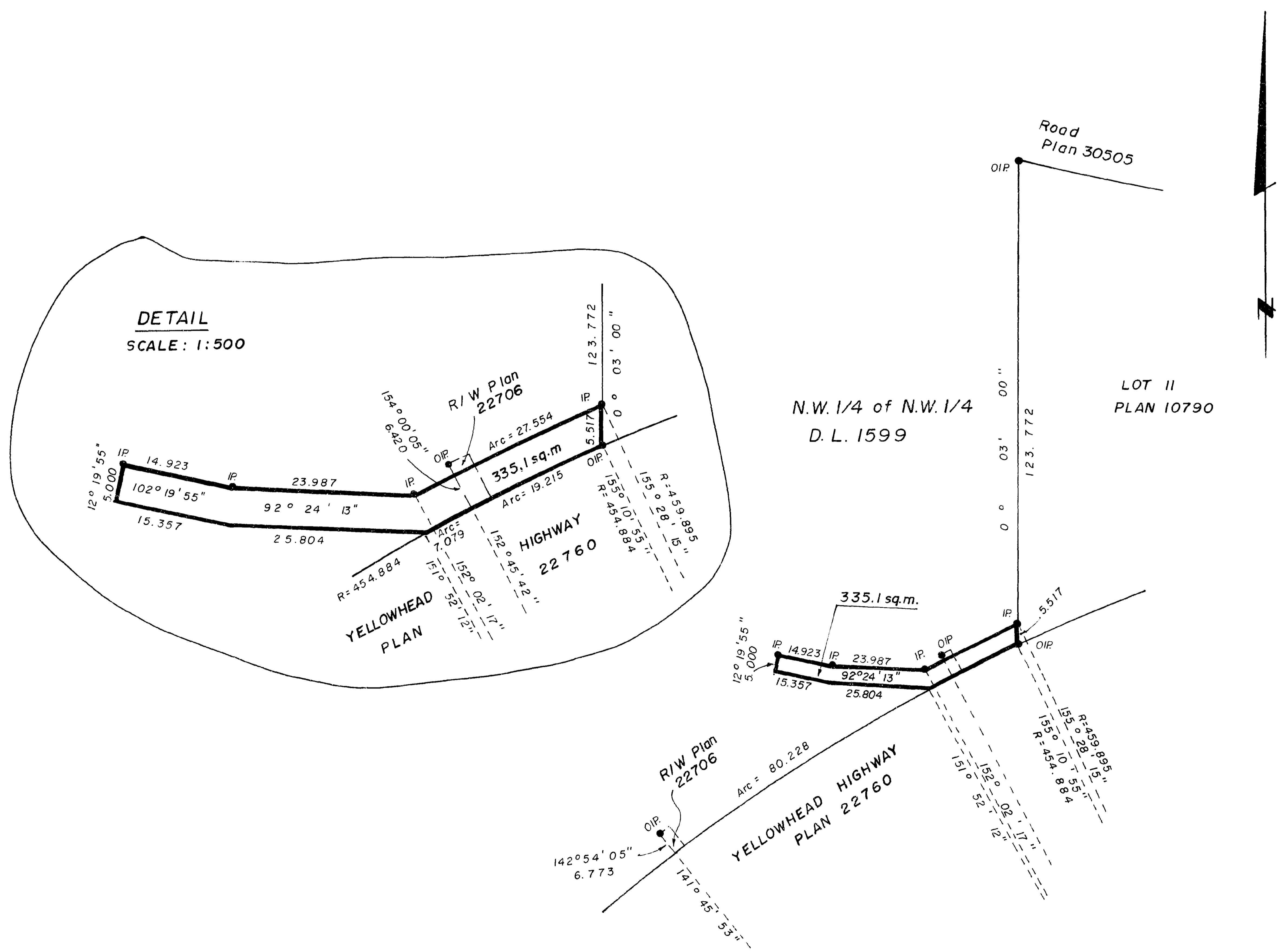


Bearings are astronomic derived from Plan 30505 - W.Bdy. L.II = 0°03'00"

- IP..... Standard Iron Post.
- Denotes "old"

PLAN NO. 32782
Deposited in the Land Title Office at Prince George
this 27 day of JAN 1988

"St. Handy" m.
Registrar



I, G. Kilbride, a British Columbia Land Surveyor, of Prince George in British Columbia certify that I was present at and personally superintended the survey represented by this plan and that the survey and plan are correct. The survey was completed on the 13th day of October, 1987.

Gordon Killin
G. Kilbride, B.C.L.S.

| BOOK OF REFERENCE | |
|--------------------------------|-------------|
| Description | Area |
| N.W. 1/4 of N.W. 1/4 D.L. 1599 | 335.1 sq.m. |

This plan lies within the Fraser Fort GEORGE REGIONAL DISTRICT

McWilliam, Whyte, Goble & Associates,
B.C. Land Surveyors,
Prince George-Kamloops-Smithers-Salmon Arm.
REF. NO. 87228 QP 31