

26-FF-226

PLAN NO. 32731

DEPOSITED IN THE LAND TITLE OFFICE
AT PRINCE GEORGE, B.C., THIS 11
DAY OF JUN, 1988

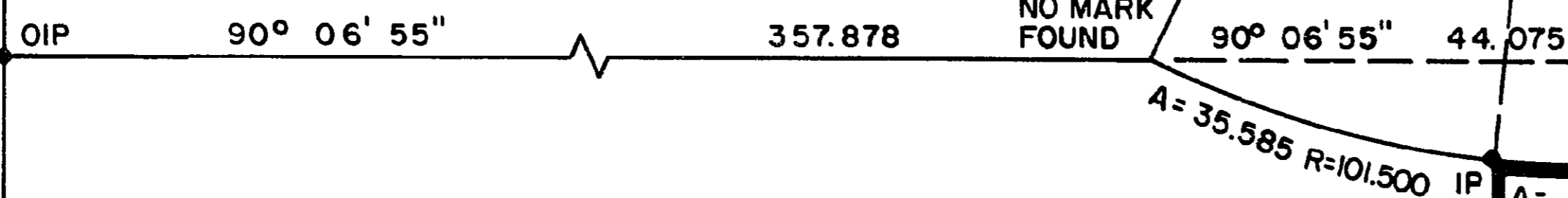
R. L. Johns
REGISTRAR

S. W. 1/4 D. L. 2424

B. C. HYDRO & POWER AUTHORITY
R/W PLAN 18310

PLAN 27163

A
PLAN 11003



MARTIN ROAD
00° 03' 00" 10.058

2
PLAN 9705

A
PLAN 11436

3
PLAN 8935

PLAN OF STATUTORY RIGHT-OF-WAY FOR MUNICIPAL PURPOSES THROUGH S.W. 1/4 OF S.E. 1/4 OF DISTRICT LOT 2424 CARIBOO DISTRICT - BRITISH COLUMBIA

SCALE 1 : 1000



BEARINGS ARE ASTRONOMIC, DERIVED FROM THE WEST BOUNDARY
OF LOT A, PLAN 11436.

LEGEND

- OPP DENOTES AN OLD PIPE POST FOUND.
- OIP DENOTES AN OLD IRON PIN FOUND.
- IP DENOTES AN IRON PIN SET.



S. W. 1/4 OF S. E. 1/4 D. L. 2424

AREA REQUIRED = 0.3915 HA.

S. W. 1/4 D. L. 2424

B. C. HYDRO & POWER AUTHORITY
R/W PLAN 18310

PLAN 23232

1 2
PLAN 20902

I, RONALD L. JOHNS, A BRITISH COLUMBIA LAND SURVEYOR, OF PRINCE GEORGE, IN BRITISH COLUMBIA, CERTIFY THAT I WAS PRESENT AT AND PERSONALLY SUPERINTENDED THE SURVEY REPRESENTED BY THIS PLAN AND THAT THE SURVEY AND PLAN ARE CORRECT. THE SURVEY WAS COMPLETED ON THE 21st DAY OF APRIL, 1987.

R. L. Johns

R. L. JOHNS, B.C.L.S.

N. W. 1/4 D. L. 4048

N. W. 1/4 OF N. E. 1/4
D. L. 4048

HANDLIN ROAD
NOT POSTED FALLS IN ROAD

1
PLAN 16759

THIS PLAN LIES WITHIN THE FRASER-FORT GEORGE REGIONAL DISTRICT.

R. L. JOHNS & ASSOCIATES
LEGAL AND ENGINEERING SURVEYS
P. O. BOX 824
PRINCE GEORGE - B.C.
V2L 4V3